

# Sherwood Forest Lepidoptera - Butterflies

Historical and modern species lists and records - Second Edition 2010



*T. and D. Pendleton*

## **Introduction to Sherwood Forest Lepidoptera - Butterflies Second edition 2010**

This publication is aimed at providing an accurate record of all Sherwood Forest Lepidoptera recorded from the 1800's, the 1900's, post-2000 records and completely up to date with the inclusion of the latest records from 2009 and follows the same format as we have used in the accompanying publications on Sherwood Forest Lepidoptera (Moths) Coleoptera and Arachnids published in 2009.

This is the second edition of this project and again includes traceable public records and those held privately by local naturalists and our thanks go to those individuals who have provided their records for inclusion and supported this project. It is hoped that more old records will be made available over the coming years, helping to create a more accurate record of the forest's Lepidoptera.

The full site species list which has been compiled from various sources and includes historical records sourced from J.W. Carr's book "*The Invertebrate Fauna of Nottinghamshire*" published in 1916.

*Trevor and Dilys Pendleton*  
December 2009

### **Butterflies at Sherwood Forest**

The recording of butterflies in Sherwood Forest, has remained relatively poor in over a century of recording. This seems rather surprising, given their considerably more obvious daylight habits.

There were without doubt, more species of butterfly flying around the forest a century ago, than there are today. Whilst some of this is too easily put down to climatic changes over that time, much has to be credited to changes in land use around the area and the increase in commercial forestry. The whole of the Sherwood Forest area is still extremely poor in its floral diversity and species which continue to flourish today, are mainly grass feeding butterflies such as the Browns.

The Fritillaries, Large Tortoiseshell and Purple Emperor, all died out many years ago and are unlikely to ever make any sort of comeback at Sherwood. Reintroduction schemes are unlikely to work for any formerly occurring species', due to the Forest's poor floral diversity.

Throughout the species list, it may be noticed that there are no historical records for

many of our most common butterflies, namely the *Pieridae* and *Nymphalidae* such as Small Tortoiseshell, Peacock, Meadow Brown and Ringlet. This is due to Carr describing them as being "*widespread throughout the county*" rather than deliberately listing individual sites such as Sherwood Forest, Budby etc.

### **Included records and recording boundaries**

Due to a legal loophole, Natural England had to notify the ancient Sherwood Forest area as two separate Sites of Special Scientific Interest (SSSI) which they continue to regard as representing the whole of the Birklands and Bilhaugh (Sherwood Forest) complex. The two SSSI's are known as Birklands and Bilhaugh and Birklands West and Ollerton Corner. We have included detailed maps of both SSSI's in this edition, which also sees the inclusion of all Coleoptera records from both SSSI's. Records which were sourced to specific areas within either SSSI and where known, are published.

Records are included from the following sites located within the two SSSI's.

#### **Birklands and Bilhaugh SSSI**

Sherwood Forest Country Park  
Budby South Forest  
Proteus Square  
Buck Gates

#### **Birklands West and Ollerton Corner SSSI**

Sherwood Heath  
Clipstone Old Quarter

To save space in the records section, we have had to abbreviate location specific records down to individual areas of both SSSI's. Consequently, a record from Proteus

Square would be abbreviated to *Birklands and Bilhaugh / Proteus Sq*, or a record from Sherwood Heath would be abbreviated to *Birklands West / Sherwood Heath* etc. Any other records shown only as Birklands West and Ollerton Corner, are from areas away from Sherwood Heath and Clipstone Old Quarter and are largely attributable to areas situated to the west of the Country Park. At the current time, it is thought impractical to abbreviate all of the known sites within the SSSI's and this also serves to avoid the records becoming over complicated to the reader.

## Sourcing records

Most of the records included in the lists, are thought to have originated from what is now the Sherwood Forest Country Park area, but without accurate grid references or specifically indicated sites for most of the records, we found this could not be guaranteed.

It was our original intention to produce a document which listed records only from the Country Park area, but this idea was soon abandoned by what seemed a greater need for encompassing all of the Sherwood Forest records we had available to us for inclusion.

Many of the records were sourced from hand-written lists provided by individuals or the Derbyshire Entomological Society. These were held by staff at the Sherwood Forest Visitor Centre. Many of these lists were extremely vague in their dating, or providing a reference source for these records, leading to some gaps in the main list. Quite often the document was untitled, or had no accompanying note or correspondence to help those reading it.

Unfortunately, further appeals for records via a variety of media was disappointingly received, but we continue to search for additional records for inclusion in the third edition which should be ready in early 2011.

## Sources of Reference

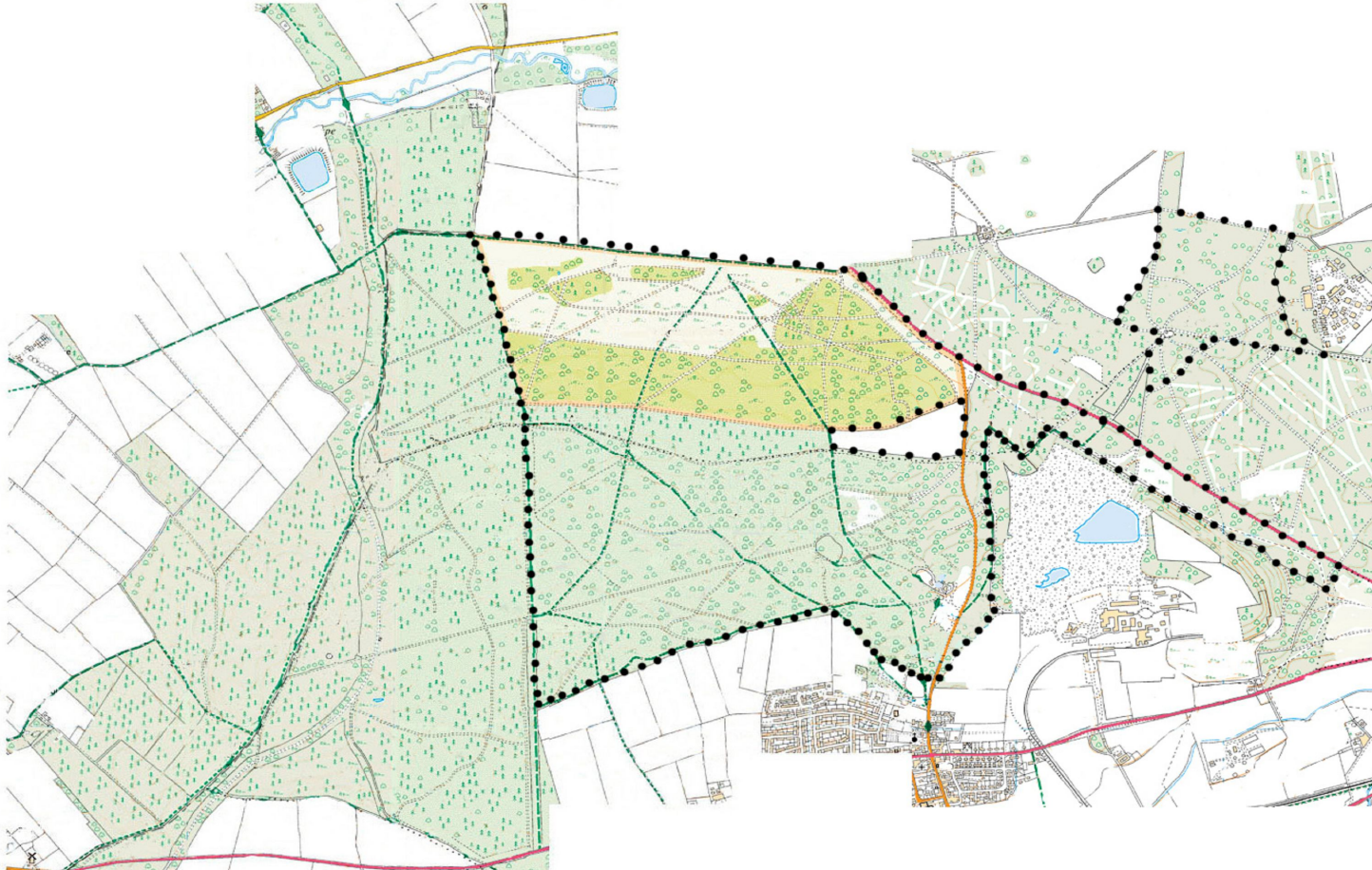
- Ref: 1** Carr, J.W. (1916) *The Invertebrate Fauna of Nottinghamshire*. Nottingham: J.& H. Bell Ltd.
- Ref: 19** BRC Files
- Ref: 36** Pendleton, T.A. and Pendleton, D.T. Privately held record (published)
- Ref: 48** Harrison, F.
- Ref: 52** Harrison, F. (1979) *Notes concerning the status and distribution of the less common species of Nottinghamshire Macro-lepidoptera*.
- Ref: 73** Joynt, G. Privately held record (published)
- Ref: 81** Sherwood Forest Visitor Centre. *Untitled handwritten document*.
- Ref: 90** Wright, S. 2001. *The Conservation Status of Lepidoptera in Nottinghamshire. Second edition, December 2001*. Nottingham Natural History Museum.

**Ref: 107** Frost, R.A. (1989) Annual Lepidoptera report (1989) Part1: Butterflies. *Derbyshire Entomological Society Quarterly Journal*, No. 97: 16-34

**Ref: 111** Binding, A. and Binding, A.E. Survey of Hazel Pot Beetle *Cryptocephalus coryli* at Sherwood Forest NNR, Nottinghamshire 2009. A report to Natural England.

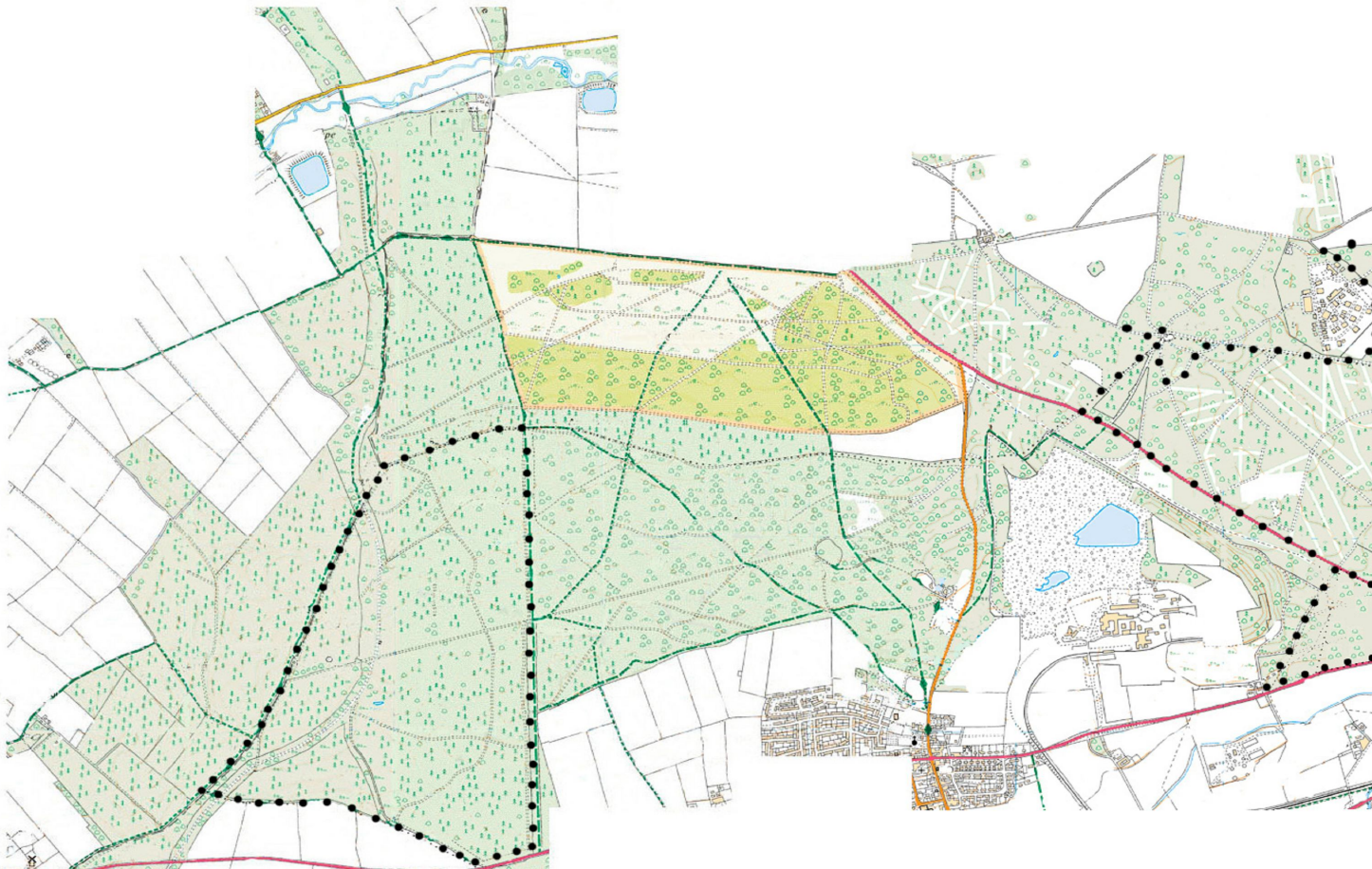
## Map Birklands and Bilhaugh SSSI

Computer generated map showing the two sections of the Birklands and Bilhaugh SSSI. The star shaped section in the upper right of the map represents Proteus Square



## Map Birklands West and Ollerton Corner SSSI

Computer generated map showing the two sections of the Birklands West and Ollerton Corner SSSI. Sherwood Heath is the small triangular section in the lower right of the map.



## Hesperiidae

### Hesperiinae

1526 <i>Thymelicus sylvestris</i> <b>Small Skipper</b>	Harrison, F. 1980 Harrison, F. 1982 Frost, R.A. 1982 Pendleton, T.A. and Pendleton, D.T. 2007 Pendleton, T.A. and Pendleton, D.T. 2008 Pendleton, T.A. and Pendleton, D.T. 2009 Pendleton, T.A. and Pendleton, D.T. 2009 Binding, A.E. and Binding, A. 2009 Pendleton, T.A. and Pendleton, D.T. 2009 Pendleton, T.A. and Pendleton, D.T. 2009	Birklands and Bilhaugh Birklands and Bilhaugh Birklands and Bilhaugh Birklands and Bilhaugh Birklands and Bilhaugh Birklands West / Sherwood Heath Birklands West / Clipstone Old Quarter Birklands and Bilhaugh Birklands and Bilhaugh / Budby SF Birklands and Bilhaugh	Ref: 81 Ref: 81 Ref: 81 Ref: 36 Ref: 36 Ref: 36 Ref: 36 Ref: 111 Ref: 36 Ref: 36
1527 <i>Thymelicus lineola</i> <b>Essex Skipper</b>	Pendleton, T.A. and Pendleton, D.T. 2009 Pendleton, T.A. and Pendleton, D.T. 2009	Birklands and Bilhaugh Birklands and Bilhaugh / Budby SF	Ref: 36 Ref: 36
1531 <i>Ochlodes sylvanus</i> <b>Large Skipper</b>	Lievers White, M.C. 1982 Pendleton, T.A. and Pendleton, D.T. 2007 Pendleton, T.A. and Pendleton, D.T. 2008 Pendleton, T.A. and Pendleton, D.T. 2009 Pendleton, T.A. and Pendleton, D.T. 2009 Pendleton, T.A. and Pendleton, D.T. 2009 Pendleton, T.A. and Pendleton, D.T. 2009 Binding, A.E. and Binding, A. 2009	Birklands and Bilhaugh Birklands and Bilhaugh Birklands and Bilhaugh Birklands and Bilhaugh Birklands West / Sherwood Heath Birklands West / Clipstone Old Quarter Birklands and Bilhaugh / Budby SF Birklands and Bilhaugh Birklands and Bilhaugh	Ref: 1 Ref: 81 Ref: 36 Ref: 36 Ref: 36 Ref: 36 Ref: 36 Ref: 36 Ref: 111

## Pieridae

### Dismorphiinae

1541 <i>Leptidae sinapis</i> <b>Wood White</b>	Sterland 1906 1907 1908 1909	Birklands and Bilhaugh Birklands and Bilhaugh Birklands and Bilhaugh Birklands and Bilhaugh Birklands and Bilhaugh	Ref: 1 Ref: 19 Ref: 19 Ref: 19 Ref: 19
1543 <i>Colias hyale</i> <b>Pale Clouded Yellow</b>	Sterland	Birklands and Bilhaugh	Ref: 1

### Coliadinae

1546 <i>Gonepteryx rhamni</i> <b>Brimstone</b>	Frost, R.A. 1978 White, M.C. 1982 Frost, R.A. 1983 Pendleton, T.A. and Pendleton, D.T. 2008 Pendleton, T.A. and Pendleton, D.T. 2009 Pendleton, T.A. and Pendleton, D.T. 2009 Binding, A.E. and Binding, A. 2009	Birklands and Bilhaugh / Budby SF Birklands and Bilhaugh Birklands and Bilhaugh Birklands and Bilhaugh Birklands West / Clipstone Old Quarter Birklands and Bilhaugh Birklands and Bilhaugh	Ref: 81 Ref: 81 Ref: 81 Ref: 36 Ref: 36 Ref: 36 Ref: 111
---	--	---	--

1548	<i>Aporia crataegi</i> <b>Black-veined White</b>			
1549	<i>Pieris brassicae</i> <b>Large White</b>	Harrison, F. 1982 Pendleton, T.A. and Pendleton, D.T. 2007 Pendleton, T.A. and Pendleton, D.T. 2008 Pendleton, T.A. and Pendleton, D.T. 2009 Pendleton, T.A. and Pendleton, D.T. 2009 Binding, A.E. and Binding, A. 2009 Pendleton, T.A. and Pendleton, D.T. 2009 Pendleton, T.A. and Pendleton, D.T. 2009	Birklands and Bilhaugh Birklands and Bilhaugh Birklands and Bilhaugh Birklands West / Sherwood Heath Birklands West / Clipstone Old Quarter Birklands and Bilhaugh Birklands and Bilhaugh / Budby SF Birklands and Bilhaugh	Ref: 81 Ref: 36 Ref: 36 Ref: 36 Ref: 36 Ref: 111 Ref: 36 Ref: 36
1550	<i>Pieris rapae</i> <b>Small White</b>	Harrison, F. 1982 Pendleton, T.A. and Pendleton, D.T. 2007 Pendleton, T.A. and Pendleton, D.T. 2008 Pendleton, T.A. and Pendleton, D.T. 2009 Pendleton, T.A. and Pendleton, D.T. 2009 Pendleton, T.A. and Pendleton, D.T. 2009 Pendleton, T.A. and Pendleton, D.T. 2009	Birklands and Bilhaugh Birklands and Bilhaugh Birklands and Bilhaugh Birklands West / Sherwood Heath Birklands West / Clipstone Old Quarter Birklands and Bilhaugh / Budby SF Birklands and Bilhaugh	Ref: 81 Ref: 36 Ref: 36 Ref: 36 Ref: 36 Ref: 36 Ref: 36
1551	<i>Pieris napi</i> <b>Green-veined White</b>	Harrison, F. 1982 Pendleton, T.A. and Pendleton, D.T. 2007 Pendleton, T.A. and Pendleton, D.T. 2008 Pendleton, T.A. and Pendleton, D.T. 2009 Pendleton, T.A. and Pendleton, D.T. 2009 Binding, A.E. and Binding, A. 2009 Pendleton, T.A. and Pendleton, D.T. 2009 Pendleton, T.A. and Pendleton, D.T. 2009	Birklands and Bilhaugh Birklands and Bilhaugh Birklands and Bilhaugh Birklands West / Sherwood Heath Birklands West / Clipstone Old Quarter Birklands and Bilhaugh Birklands and Bilhaugh / Budby SF Birklands and Bilhaugh	Ref: 81 Ref: 36 Ref: 36 Ref: 36 Ref: 36 Ref: 111 Ref: 36 Ref: 36
1553	<i>Anthocharis cardamines</i> <b>Orange-tip</b>	Pendleton, T.A. and Pendleton, D.T. 2007 Pendleton, T.A. and Pendleton, D.T. 2008 Pendleton, T.A. and Pendleton, D.T. 2009 Pendleton, T.A. and Pendleton, D.T. 2009 Binding, A.E. and Binding, A. 2009 Pendleton, T.A. and Pendleton, D.T. 2009	Birklands and Bilhaugh Birklands and Bilhaugh Birklands and Bilhaugh Birklands West / Clipstone Old Quarter Birklands and Bilhaugh Birklands and Bilhaugh / Budby SF	Ref: 36 Ref: 36 Ref: 36 Ref: 36 Ref: 111 Ref: 36
<b>Lycaenidae</b>				
<b>Lycaeninae</b>				
1555	<i>Callophrys rubi</i> <b>Green Hairstreak</b>	Sterland	Birklands and Bilhaugh	Ref: 1
1556	<i>Thecla betulae</i> <b>Brown Hairstreak</b>	Elliott, B. 1982	Birklands and Bilhaugh	Ref: 96
1557	<i>Neozephyrus quercus</i> <b>Purple Hairstreak</b>	Rodgers, W. 1857 1953 1969	Birklands and Bilhaugh Birklands and Bilhaugh Birklands and Bilhaugh / Budby SF	Ref: 1 Ref: 52 Ref: 81

	1982	Birklands and Bilhaugh	Ref: 81
	Frost, R.A. 1981	Birklands and Bilhaugh	Ref: 81
	White, M.C. 1981	Birklands and Bilhaugh	Ref: 81
	Harrison, F. 1982	Birklands and Bilhaugh	Ref: 81
	Baker, D. 1982	Birklands and Bilhaugh	Ref: 81
	White, M.C. 1982	Birklands and Bilhaugh	Ref: 81
	Braddock, A. 1982	Birklands and Bilhaugh	Ref: 81
	White, M.C. 1982	Birklands and Bilhaugh / Budby SF	Ref: 81
	Frost, R.A. 1983	Birklands and Bilhaugh	Ref: 81
	Hursthouse, D. 1983	Birklands and Bilhaugh	Ref: 109
	1983	Birklands and Bilhaugh	Ref: 48
	Baker, D. 1989	Birklands and Bilhaugh	Ref: 81
	Hursthouse, D. 1992	Birklands and Bilhaugh	Ref: 109
	Hursthouse, D. 2001	Birklands and Bilhaugh / Budby SF	Ref: 109
	Hursthouse, D. 2002	Birklands and Bilhaugh / Budby SF	Ref: 109
	Joynt, G. 2008	Birklands and Bilhaugh	Ref: 73
	Pendleton, T.A. and Pendleton, D.T. 2009	Birklands West / Clipstone Old Quarter	Ref: 36
1561 <i>Lycaena phlaeas</i> <b>Small Copper</b>	Birchall, H. 1872	Birklands and Bilhaugh	Ref: 1
	Frost, R.A. 1979	Birklands and Bilhaugh	Ref: 81
	Harrison, F. 1982	Birklands and Bilhaugh	Ref: 81
	White, M.C. 1982	Birklands and Bilhaugh / Budby SF	Ref: 81
	Harrison, F. 1983	Birklands and Bilhaugh	Ref: 81
	Godfrey, A. 2006	Birklands West / Sherwood Heath	Ref: 108
	Pendleton, T.A. and Pendleton, D.T. 2007	Birklands and Bilhaugh	Ref: 36
	Pendleton, T.A. and Pendleton, D.T. 2008	Birklands and Bilhaugh	Ref: 36
	Pendleton, T.A. and Pendleton, D.T. 2009	Birklands West / Sherwood Heath	Ref: 36
	Binding, A.E. and Binding, A. 2009	Birklands and Bilhaugh	Ref: 111
	Pendleton, T.A. and Pendleton, D.T. 2009	Birklands West / Clipstone Old Quarter	Ref: 36
	Pendleton, T.A. and Pendleton, D.T. 2009	Birklands and Bilhaugh / Budby SF	Ref: 36
	Pendleton, T.A. and Pendleton, D.T. 2009	Birklands and Bilhaugh	Ref: 36
1571 <i>Plebeius argus</i> <b>Silver-studded Blue</b>	Brameld	Birklands and Bilhaugh	Ref: 1
1572 <i>Aricia agestis</i> <b>Brown Argus</b>	Hursthouse, D. 2003	Birklands and Bilhaugh / Budby SF	Ref: 109
1574 <i>Polyommatus icarus</i> <b>Common Blue</b>	White, M.C. 1982	Birklands and Bilhaugh	Ref: 81
	White, M.C. 1982	Birklands and Bilhaugh / Budby SF	Ref: 81
	Harrison, F. 1983	Birklands and Bilhaugh	Ref: 81
	Pendleton, T.A. and Pendleton, D.T. 2009	Birklands West / Clipstone Old Quarter	Ref: 36
	Pendleton, T.A. and Pendleton, D.T. 2009	Birklands and Bilhaugh / Budby SF	Ref: 36
1580 <i>Celastrina argiolus</i> <b>Holly Blue</b>	Pendleton, T.A. and Pendleton, D.T. 2004	Birklands West / Clipstone Old Quarter	Ref: 36
	Pendleton, T.A. and Pendleton, D.T. 2005	Birklands West / Clipstone Old Quarter	Ref: 36
	Pendleton, T.A. and Pendleton, D.T. 2006	Birklands West / Clipstone Old Quarter	Ref: 36
	Pendleton, T.A. and Pendleton, D.T. 2007	Birklands West / Clipstone Old Quarter	Ref: 36

Pendleton, T.A. and Pendleton, D.T. 2008

Birklands West / Clipstone Old Quarter

Ref: 36

## **Nymphalidae**

### **Apaturinae**

1585 *Apatura iris*  
**Purple Emperor**

Hardy, J.R. 1874  
Hardy, J.R. 1875  
1899

Birklands and Bilhaugh  
Birklands and Bilhaugh  
Birklands and Bilhaugh

Ref: 1  
Ref: 1  
Ref: 1

### **Nymphalinae**

1590 *Vanessa atalanta*  
**Red Admiral**

Frost, R.F. 1979  
White, M.C. 1982  
White, M.C. 1982  
Pendleton, T.A. and Pendleton, D.T. 2008  
Pendleton, T.A. and Pendleton, D.T. 2009

Birklands and Bilhaugh / Budby SF  
Birklands and Bilhaugh  
Birklands and Bilhaugh / Budby SF  
Birklands and Bilhaugh  
Birklands and Bilhaugh

Ref: 81  
Ref: 81  
Ref: 81  
Ref: 36  
Ref: 36

1591 *Vanessa cardui*  
**Painted Lady**

1892  
White, M.C. 1982  
Pendleton, T.A. and Pendleton, D.T. 2009  
Pendleton, T.A. and Pendleton, D.T. 2009  
Pendleton, T.A. and Pendleton, D.T. 2009  
Binding, A.E. and Binding, A. 2009  
Pendleton, T.A. and Pendleton, D.T. 2009

Edwinstowe  
Birklands and Bilhaugh  
Birklands West / Sherwood Heath  
Birklands West / Clipstone Old Quarter  
Birklands and Bilhaugh / Budby SF  
Birklands and Bilhaugh  
Birklands and Bilhaugh

Ref: 1  
Ref: 81  
Ref: 36  
Ref: 36  
Ref: 36  
Ref: 111  
Ref: 36

1593 *Aglais urticae*  
**Small Tortoiseshell**

Culpin, J. 1982  
White, M.C. 1982  
Harrison, F. 1983  
Pendleton, T.A. and Pendleton, D.T. 2007  
Pendleton, T.A. and Pendleton, D.T. 2008  
Pendleton, T.A. and Pendleton, D.T. 2009  
Pendleton, T.A. and Pendleton, D.T. 2009  
Hursthouse, D. Leach, I. Baker, P. Harte, K. and Ashford, K. 2009  
Pendleton, T.A. and Pendleton, D.T. 2009  
Pendleton, T.A. and Pendleton, D.T. 2009

Birklands and Bilhaugh  
Birklands and Bilhaugh  
Birklands and Bilhaugh  
Birklands and Bilhaugh  
Birklands and Bilhaugh  
Birklands West / Sherwood Heath  
Birklands West / Clipstone Old Quarter  
Birklands and Bilhaugh / Budby SF  
Birklands and Bilhaugh / Budby SF  
Birklands and Bilhaugh

Ref: 81  
Ref: 81  
Ref: 81  
Ref: 36  
Ref: 36  
Ref: 36  
Ref: 36  
Ref: 98  
Ref: 36  
Ref: 36

1594 *Nymphalis polychloros*  
**Large Tortoiseshell**

Hardy, J.R.

1596 *Nymphalis antiopa*  
**Camberwell Beauty**

Wilson 1858  
Sterland  
Birchall, H. 1872

Birklands and Bilhaugh  
Birklands and Bilhaugh  
Birklands and Bilhaugh

Ref: 1  
Ref: 1  
Ref: 1

1597 *Inachis io*  
**Peacock**

Harrison, F. 1982  
White, M.C. 1982  
White, M.C. 1982  
Pendleton, T.A. and Pendleton, D.T. 2007  
Pendleton, T.A. and Pendleton, D.T. 2008  
Pendleton, T.A. and Pendleton, D.T. 2009  
Pendleton, T.A. and Pendleton, D.T. 2009

Birklands and Bilhaugh  
Birklands and Bilhaugh  
Birklands and Bilhaugh / Budby SF  
Birklands and Bilhaugh  
Birklands and Bilhaugh  
Birklands West / Clipstone Old Quarter  
Birklands and Bilhaugh / Budby SF

Ref: 81  
Ref: 81  
Ref: 81  
Ref: 36  
Ref: 36  
Ref: 36  
Ref: 36

		Pendleton, T.A. and Pendleton, D.T. 2009 Binding, A.E. and Binding, A. 2009	Birklands and Bilhaugh Birklands and Bilhaugh	Ref: 36 Ref: 111
	1598 <i>Polygonia c-album</i> <b>Comma</b>	Pendleton, T.A. and Pendleton, D.T. 2007 Pendleton, T.A. and Pendleton, D.T. 2008 Pendleton, T.A. and Pendleton, D.T. 2009 Pendleton, T.A. and Pendleton, D.T. 2009 Binding, A.E. and Binding, A. 2009 Pendleton, T.A. and Pendleton, D.T. 2009	Birklands and Bilhaugh Birklands and Bilhaugh Birklands West / Clipstone Old Quarter Birklands and Bilhaugh / Budby SF Birklands and Bilhaugh Birklands and Bilhaugh	Ref: 36 Ref: 36 Ref: 36 Ref: 36 Ref: 111 Ref: 36
<b>Heliconiinae</b>	1600 <i>Boloria selene</i> <b>Small Pearl-bordered Fritillary</b>	1916	Birklands and Bilhaugh	Ref: 1
	1601 <i>Boloria euphrosyne</i> <b>Pearl-bordered Fritillary</b>	Brameld 1916 1939	Birklands and Bilhaugh Birklands and Bilhaugh Birklands and Bilhaugh	Ref: 1 Ref: 1 Ref: 19
	1606 <i>Argynnis adippe</i> <b>High Brown Fritillary</b>	Tyrer, R. and W. 1868 1916 1939	Birklands and Bilhaugh Birklands and Bilhaugh Birklands and Bilhaugh	Ref: 1 Ref: 1 Ref: 19
	1607 <i>Argynnis aglaja</i> <b>Dark Green Fritillary</b>	Sterland Brameld 1916	Birklands and Bilhaugh Birklands and Bilhaugh Birklands and Bilhaugh	Ref: 1 Ref: 1 Ref: 1
	1608 <i>Argynnis paphia</i> <b>Silver-washed Fritillary</b>	Sterland Brameld Hardy, J.R. 1916	Birklands and Bilhaugh Birklands and Bilhaugh Birklands and Bilhaugh Birklands and Bilhaugh	Ref: 1 Ref: 1 Ref: 1 Ref: 1
<b>Melitaeinae</b>	1610 <i>Euphydryas aurinia</i> <b>Marsh Fritillary</b>	Trueman, J. 1899	Birklands and Bilhaugh	Ref: 1
<b>Satyrinae</b>	1614 <i>Pararge aegeria</i> <b>Speckled Wood</b>	Sterland and Brameld Pendleton, T.A. and Pendleton, D.T. 2007 Pendleton, T.A. and Pendleton, D.T. 2008 Pendleton, T.A. and Pendleton, D.T. 2009 Pendleton, T.A. and Pendleton, D.T. 2009 Binding, A.E. and Binding, A. 2009 Pendleton, T.A. and Pendleton, D.T. 2009 Pendleton, T.A. and Pendleton, D.T. 2009	Birklands and Bilhaugh Birklands and Bilhaugh Birklands and Bilhaugh Birklands West / Sherwood Heath Birklands West / Clipstone Old Quarter Birklands and Bilhaugh Birklands and Bilhaugh / Budby SF Birklands and Bilhaugh	Ref: 1 Ref: 36 Ref: 36 Ref: 36 Ref: 36 Ref: 111 Ref: 36 Ref: 36
	1615 <i>Lasiommata megera</i> <b>Wall</b>	Sterland, Brameld and Herdy, J.R. White, M.C. 1982 Harrison, F. 1982	Birklands and Bilhaugh Birklands and Bilhaugh Birklands and Bilhaugh	Ref: 1 Ref: 81 Ref: 81
	1621 <i>Hipparchia semele</i> <b>Grayling</b>	Sterland	Birklands and Bilhaugh	Ref: 1

1625 <i>Pyronia tithonus</i> <b>Gatekeeper</b>	Pendleton, T.A. and Pendleton, D.T. 2007	Birklands and Bilhaugh	Ref: 36
	Pendleton, T.A. and Pendleton, D.T. 2008	Birklands and Bilhaugh	Ref: 36
	Pendleton, T.A. and Pendleton, D.T. 2009	Birklands West / Sherwood Heath	Ref: 36
	Pendleton, T.A. and Pendleton, D.T. 2009	Birklands West / Clipstone Old Quarter	Ref: 36
	Pendleton, T.A. and Pendleton, D.T. 2009	Birklands and Bilhaugh / Budby SF	Ref: 36
	Pendleton, T.A. and Pendleton, D.T. 2009	Birklands and Bilhaugh	Ref: 36
1626 <i>Maniola jurthina</i> <b>Meadow Brown</b>	Frost, R.A. 1979	Birklands and Bilhaugh	Ref: 81
	Harrison, F. 1982	Birklands and Bilhaugh	Ref: 81
	Harrison, F. 1983	Birklands and Bilhaugh	Ref: 81
	Pendleton, T.A. and Pendleton, D.T. 2007	Birklands and Bilhaugh	Ref: 36
	Pendleton, T.A. and Pendleton, D.T. 2008	Birklands and Bilhaugh	Ref: 36
	Pendleton, T.A. and Pendleton, D.T. 2009	Birklands West / Sherwood Heath	Ref: 36
	Pendleton, T.A. and Pendleton, D.T. 2009	Birklands West / Clipstone Old Quarter	Ref: 36
	Pendleton, T.A. and Pendleton, D.T. 2009	Birklands and Bilhaugh / Budby SF	Ref: 36
	Binding, A.E. and Binding, A. 2009	Birklands and Bilhaugh	Ref: 111
	Pendleton, T.A. and Pendleton, D.T. 2009	Birklands and Bilhaugh	Ref: 36
1629 <i>Aphantopus hyperantus</i> <b>Ringlet</b>	Pendleton, T.A. and Pendleton, D.T. 2007	Birklands and Bilhaugh	Ref: 36
	Pendleton, T.A. and Pendleton, D.T. 2008	Birklands and Bilhaugh	Ref: 36
	Pendleton, T.A. and Pendleton, D.T. 2009	Birklands West / Sherwood Heath	Ref: 36
	Pendleton, T.A. and Pendleton, D.T. 2009	Birklands West / Clipstone Old Quarter	Ref: 36
	Binding, A.E. and Binding, A. 2009	Birklands and Bilhaugh	Ref: 111
	Pendleton, T.A. and Pendleton, D.T. 2009	Birklands and Bilhaugh / Budby SF	Ref: 36
	Pendleton, T.A. and Pendleton, D.T. 2009	Birklands and Bilhaugh	Ref: 36
1627 <i>Coenonympha pamphilus</i> <b>Small Heath</b>	Harrison, F. 1980	Birklands and Bilhaugh	Ref: 81
	Harrison, F. 1982	Birklands and Bilhaugh	Ref: 81
	Harrison, F. 1983	Birklands and Bilhaugh	Ref: 81
	Godfrey, A. 2006	Birklands West / Sherwood Heath	Ref: 108
	Pendleton, T.A. and Pendleton, D.T. 2007	Birklands and Bilhaugh	Ref: 36
	Pendleton, T.A. and Pendleton, D.T. 2008	Birklands and Bilhaugh	Ref: 36
	Pendleton, T.A. and Pendleton, D.T. 2009	Birklands West / Sherwood Heath	Ref: 36
	Binding, A.E. and Binding, A. 2009	Birklands and Bilhaugh	Ref: 111
	Pendleton, T.A. and Pendleton, D.T. 2009	Birklands West / Clipstone Old Quarter	Ref: 36
	Pendleton, T.A. and Pendleton, D.T. 2009	Birklands and Bilhaugh / Budby SF	Ref: 36
	Pendleton, T.A. and Pendleton, D.T. 2009	Birklands and Bilhaugh	Ref: 36