

Sherwood Forest Hemiptera

Historical and modern species lists and records - First Edition 2011



T. and D. Pendleton

Contents

1.0 Introduction to Sherwood Forest Hemiptera

1.1 Sourcing records

1.2 Hemiptera surveys and recorders

1.3 List of Hemiptera new to Sherwood Forest NNR in 2010

1.4 First species' records since the late 1800's and early 1900's

1.5 Sources of reference

1.6 Sherwood Forest NNR, Birklands and Bilhaugh SSSI and Birklands West and Ollerton Corner SSSI Maps

2.0 Sherwood Forest Hemiptera. Historical site species list and records.

3.0 Sherwood Forest Hemiptera. Complete site species list and records from the late 1800's to 2010

4.0 Hemiptera not recorded at Sherwood Forest NNR since the late 1800's - early 1900's

5.0 New Hemiptera recorded at Sherwood Forest NNR since 2000

6.0 Red Listed and Nationally Notable Hemiptera recorded at Sherwood Forest NNR 1800's - 2010

1.0 Introduction to Sherwood Forest Hemiptera First edition 2011

This first edition of Sherwood Forest Hemiptera, brings together all currently available Hemiptera records from the NNR into a single document. It follows the same format as other site species lists that are available for Coleoptera, Lepidoptera (moths) Lepidoptera (butterflies) and Arachnida. All are updated annually and available for free download from www.eakringbirds.com.

Such lists are an invaluable resource for the modern entomologist and have the support of Natural England East Midlands, the Sherwood Forest Trust, the Derbyshire and Nottinghamshire Entomological Society and the staff at the Sherwood Forest Visitor Centre, who continue to provide us with the necessary records and data, to help make these lists as comprehensive as possible.

These records, together with personal invertebrate records from several local entomologists, have all contributed to making the first edition of Sherwood Forest Hemiptera.

As in keeping with the first editions of the other invertebrate lists, this edition includes a separate historical species/records list, all the RDB and Nationally notable species, those species not recorded since Carr's book and those species recorded as being new to the NNR since 2000.

Trevor and Dilys Pendleton Dec 2010

1.1 Sourcing records

Once again we have sourced all the historical records from J.W. Carr's invaluable "*The Invertebrate Fauna of Nottinghamshire*" published in 1916. To have such an excellent resource available, means that changes in the Sherwood Forest fauna over a century ago, can be compared to the findings of present day naturalists and invertebrate enthusiasts.

One of the problems when creating site lists using any old document, are the often too frequent changes in nomenclature, which add many days work to projects such as this. Working through the Heteroptera and Homoptera nomenclature, was probably not as difficult as it was when we did the same for the Coleoptera lists a few years ago and thankfully, around 50% of the species still retain the same name today, as they did when Carr was working on his original publication nearly 100 years ago. Having said that, it is likely that there are still a few errors in nomenclature still to be sorted out.

1.2 Hemiptera surveys and recorders

Hemiptera has always been an under-recorded group and most of the historical site records are attributable to a few individuals, namely L.A. Carr, J.W. Carr, Thornley and W.E. Ryles.

Hemiptera records from Sherwood Heath by A. Godfrey between 2003 and 2006 have contributed substantially towards the production of the species list, from this less frequently recorded Sherwood Forest site and provided several new species for the NNR. Similarly, R. Merritt's records for *Nepidae*, *Corixidae*, *Naucoridae*, *Notonectidae*, *Veliidae* and *Gerridae* are just about the only records listed.

Today, there seem to be even fewer individuals making real efforts to record Sherwood's Hemiptera, with most recent records coming either through casual field observations or invertebrate site surveys primarily geared towards Coleoptera or Lepidoptera.

1.3 List of Hemiptera new to Sherwood Forest NNR in 2010

Miridae

<i>Calocoris alpestris</i>	Birklands and Bilhaugh
<i>Deraeocoris lutescens</i>	Birklands West and Ollerton Corner
<i>Notostris elongata</i>	Birklands and Bilhaugh / Budby SF
<i>Rhabdormiris striatellus</i>	Birklands and Bilhaugh

Anthocoridae

<i>Anthocoris nemorum</i>	Birklands West and Ollerton Corner
---------------------------	------------------------------------

Reduviidae

<i>Empicoris vagabundus</i>	Birklands and Bilhaugh
-----------------------------	------------------------

Aradidae

<i>Aradus depressus</i>	Birklands and Bilhaugh
-------------------------	------------------------

Berytidae

<i>Metatropis rufescens</i>	Birklands and Bilhaugh
-----------------------------	------------------------

Lygaeidae

<i>Gastrodes grossipes</i>	Birklands and Bilhaugh / Budby SF
<i>Trapezonotus desertus</i>	Birklands and Bilhaugh

Rhopalidae

Stictopleurus punctatonervosus Birklands and Bilhaugh / Budby SF

Pentatomidae

Thyreocoris scarabaeoides Birklands and Bilhaugh

Cicadellidae

Kybos betulicola Birklands and Bilhaugh / Budby SF

Mocysiopsis attenuata Birklands and Bilhaugh / Budby SF

Delphacidae

Conomelus anceps Birklands and Bilhaugh / Budby SF

Ditropis pteridis Birklands and Bilhaugh / Budby SF

1.4 First species' records since the late 1800's and early 1900's

Miridae

Liocoris tripustulatus Birklands and Bilhaugh

Anthocoridae

Anthocoris nemoralis Birklands West and Ollerton Corner

Lygaeidae

Drymus sylvaticus Birklands and Bilhaugh

Cicadellidae

Euscelis incisus Birklands and Bilhaugh / Budby SF

Ledra aurita Birklands and Bilhaugh

1.5 Sources of reference

Ref: 1 Carr, J.W. (1916) *The Invertebrate Fauna of Nottinghamshire*. Nottingham: J.& H. Bell Ltd.

Ref: 10 Carr, J.W. (1935) *The Invertebrate Fauna of Nottinghamshire. Supplement*. Nottingham: J.& H. Bell Ltd.

Ref: 36 Pendleton, T.A. and Pendleton, D.T. Privately held record (published)

Ref: 104. Godfrey, A. (2003) *Sherwood Heath SSSI Invertebrate Survey*. A report to Sherwood Forest Trust March 2004

Ref: 105. Godfrey, A. (2004) *Sherwood Heath SSSI Invertebrate Survey*. A report to Sherwood Forest Trust, January 2005

Ref: 108. Godfrey, A. (2006) *Sherwood Heath SSSI Invertebrate Survey*. A report to Sherwood Forest Trust, January 2007

Ref: 117 Alexander, K.N.A. Invertebrate assemblage condition at Birklands and Bilhaugh SSSI. A report to Natural England Nottinghamshire Team, July 2010.

Ref: 118 Alexander, K.N.A. Invertebrate assemblage condition at Birklands West and Ollerton Corner SSSI. A report to Natural England Nottinghamshire Team, July 2010.

Ref: 119 Pendleton, T.A. and Pendleton, D.T. Budby South Forest Invertebrate Assemblage, July-September 2010 - A preliminary report to Natural England East Midlands

1.6 Sherwood Forest NNR, Birklands and Bilhaugh SSSI and Birklands West and Ollerton Corner SSSI Maps

Due to a legal loophole, Natural England had to notify the ancient Sherwood Forest area as two separate Sites of Special Scientific Interest (SSSI) which they continue to regard as representing the whole of the Birklands and Bilhaugh (Sherwood Forest) complex. The two SSSI's are known as Birklands and Bilhaugh and Birklands West and Ollerton Corner. We have included detailed maps of both SSSI's in this edition, which sees the inclusion of all Hemiptera records from both SSSI's. Records which were sourced to specific areas within either SSSI and where known, are published.

Records are included from the following sites located within the two SSSI's.

Birklands and Bilhaugh SSSI

Sherwood Forest Country Park	(Birklands and Bilhaugh)
Budby South Forest	(Birklands and Bilhaugh / Budby SF)
Proteus Square	(Birklands and Bilhaugh / Proteus Sq)
Buck Gates	(Birklands and Bilhaugh / Buck Gates)

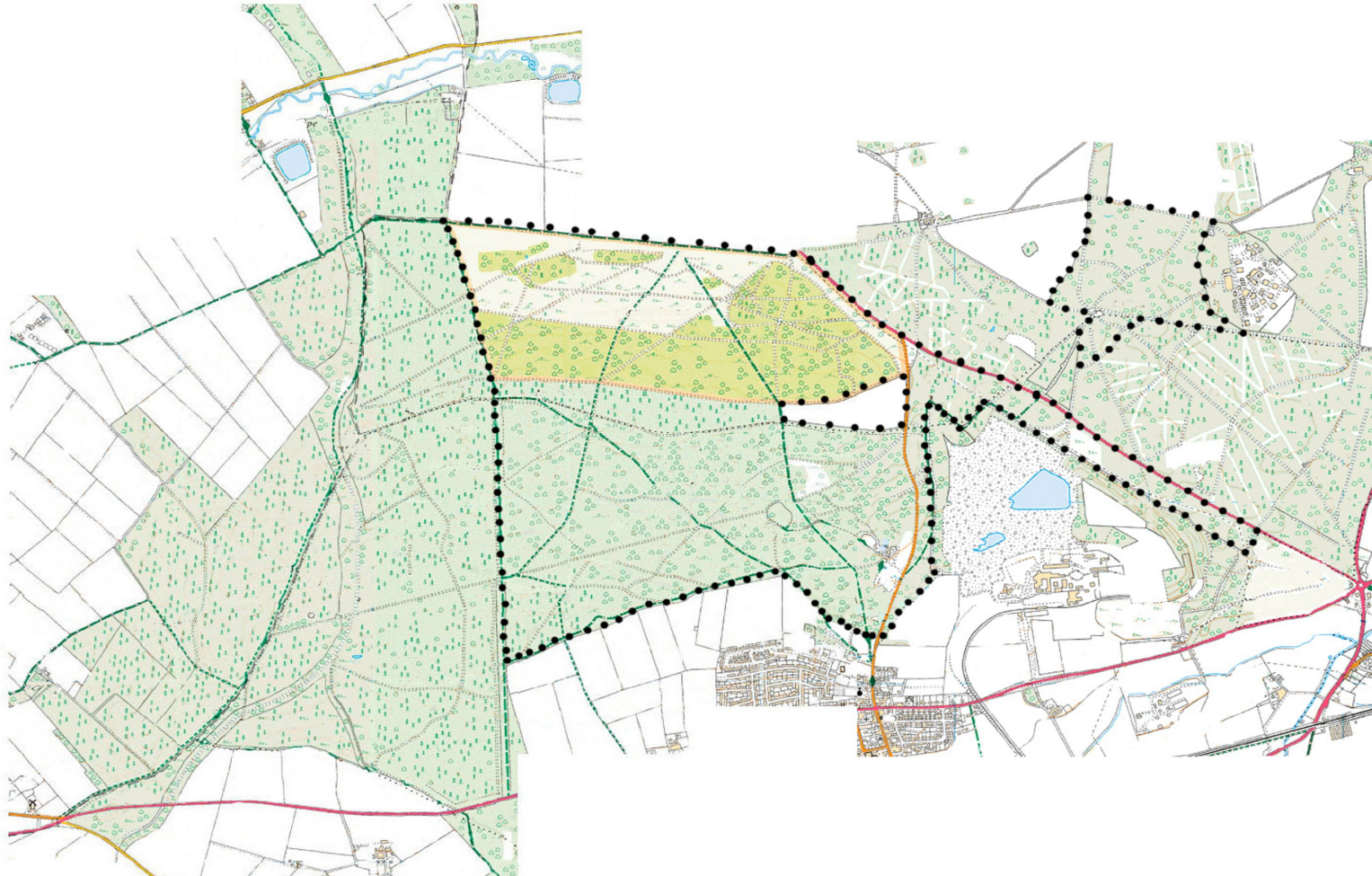
Birklands West and Ollerton Corner SSSI

Sherwood Heath	(Birklands West / Sherwood Heath)
Clipstone Old Quarter	(Birklands West / Clipstone Old Quarter)

To save space in the records section, we have had to abbreviate location specific records down to individual areas of both SSSI's.

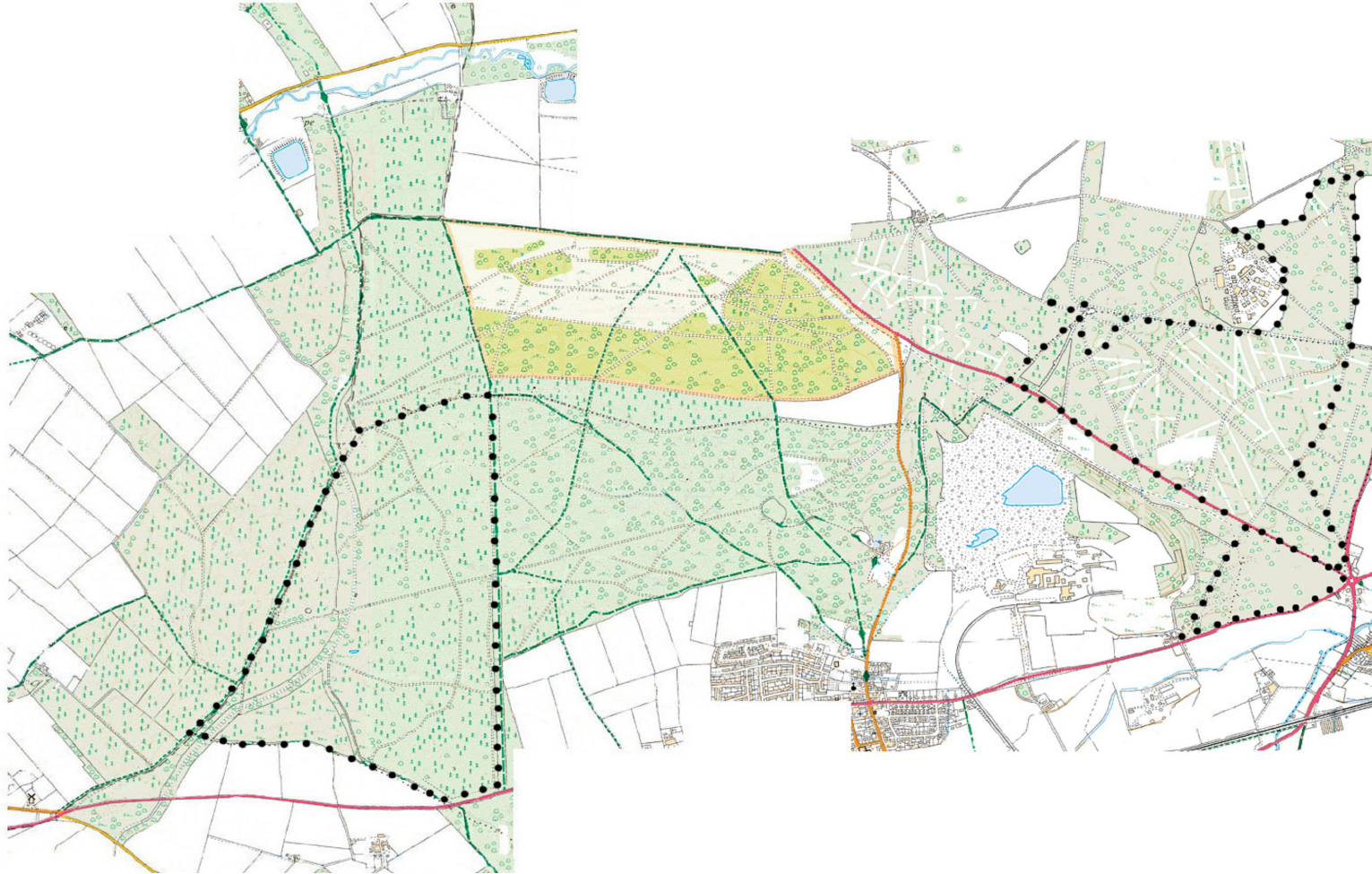
Map Birklands and Bilhaugh SSSI

Computer generated map showing the two sections of the Birklands and Bilhaugh SSSI. The star shaped section in the upper right of the map represents Proteus Square



Map Birklands West and Ollerton Corner SSSI

Computer generated map showing the two sections of the Birklands West and Ollerton Corner SSSI. Sherwood Heath is the small triangular section in the lower right of the map.



2.0 Sherwood Forest Hemiptera. Historical site species list and records.

Heteroptera Shieldbugs, Squashbugs, Ground Bugs, Stilt Bugs, Assassin Bugs, Damsel Bugs, Lacebugs, Mirid Bugs and Water Bugs.

Nepidae

<i>Nepa cinerea</i>	Carr, L.A.	Birklands West and Ollerton Corner	Ref: 1
Water Scorpion			

Saldidae

<i>Chartoscirta cocksii</i>	Carr, L.A. 1914	Birklands West and Ollerton Corner	Ref: 1
<i>Macrosaldula scotica</i>	Carr, L.A. 1914	Birklands West and Ollerton Corner	Ref: 1
<i>Saldula orthochila</i>	1911	Birklands West and Ollerton Corner	Ref: 1
	1914	Birklands West and Ollerton Corner	Ref: 1
<i>Saldula saltatoria</i>	Carr, L.A. 1914	Birklands West and Ollerton Corner	Ref: 1
Common Shore Bug		Birklands and Bilhaugh / Budby SF	Ref: 10

Tingidae

<i>Derephysia foliacea</i>	1914	Birklands West and Ollerton Corner	Ref: 1
<i>Dictyonota strichnocera</i>	1912	Birklands and Bilhaugh	Ref: 1
Gorse Lacebug	1914	Birklands and Bilhaugh	Ref: 1
<i>Tingis cardui</i>	1913	Birklands and Bilhaugh	Ref: 1
Spear Thistle Lacebug	1914	Birklands and Bilhaugh	Ref: 1

Microphysidae

<i>Myrmedobia distinguenda</i>	Bedwell, E.C. 1913	Birklands and Bilhaugh	Ref: 10
--------------------------------	--------------------	------------------------	---------

Miridae

<i>Adelphocoris lineolatus</i>	Ryles, W.E.	Birklands and Bilhaugh	Ref: 1
Lucerne Bug			
<i>Bryocoris pteridis</i>	1912	Birklands West and Ollerton Corner	Ref: 1
<i>Camptozygum aequale</i>	1914	Birklands and Bilhaugh	Ref: 1

<i>Campyloneuea virgula</i>	1912	Birklands West and Ollerton Corner	Ref: 1
<i>Capsus ater</i>	1911	Birklands and Bilhaugh	Ref: 1
	1911	Birklands West and Ollerton Corner	Ref: 1
	1912	Birklands and Bilhaugh	Ref: 1
	1912	Birklands West and Ollerton Corner	Ref: 1
	1913	Birklands West and Ollerton Corner	Ref: 1
	1913	Birklands and Bilhaugh	Ref: 1
	1914	Birklands and Bilhaugh	Ref: 1
	1914	Birklands West and Ollerton Corner	Ref: 1
<i>Closterotomus fulvomaculatus</i>	1912	Birklands West and Ollerton Corner	Ref: 1
<i>Cyllecoris histrionius</i>	1911	Birklands and Bilhaugh	Ref: 1
	1911	Birklands West and Ollerton Corner	Ref: 1
	1912	Birklands and Bilhaugh	Ref: 1
	1912	Birklands West and Ollerton Corner	Ref: 1
<i>Dicyphus globulifer</i>	Robinson. 1915	Birklands and Bilhaugh	Ref: 10
<i>Dicyphus stachydis</i>		Birklands and Bilhaugh	Ref: 1
<i>Dryophilocorus flavoquadrimaculatus</i>	1912	Birklands and Bilhaugh	Ref: 1
<i>Grypocoris stysi</i>		Birklands West and Ollerton Corner	Ref: 1
<i>Harpocera thoracica</i>	Carr, L.A. 1912	Birklands and Bilhaugh	Ref: 1
	Carr, L.A. 1914	Birklands West and Ollerton Corner	Ref: 1
	Carr, L.A. 1912	Birklands West and Ollerton Corner	Ref: 1
	Carr, L.A. 1914	Birklands and Bilhaugh	Ref: 1
<i>Leptopterna dolobrata</i> Meadow Plant Bug		Birklands and Bilhaugh	Ref: 1
		Birklands West and Ollerton Corner	Ref: 1
<i>Leptopterna ferrugata</i>	1912	Birklands West and Ollerton Corner	Ref: 1
<i>Liocoris tripustulatus</i>	1912	Birklands West and Ollerton Corner	Ref: 1
<i>Lygocoris pabulinus</i> Common Green Capsid		Birklands and Bilhaugh	Ref: 1
<i>Mecomma ambulans</i>		Birklands and Bilhaugh	Ref: 1
		Birklands West and Ollerton Corner	Ref: 1

<i>Miris striatus</i>	1904	Birklands and Bilhaugh	Ref: 1
	1912	Birklands West and Ollerton Corner	Ref: 1
	1912	Birklands and Bilhaugh	Ref: 1
<i>Monalocoris filicis</i> Bracken Bug		Birklands and Bilhaugh	Ref: 1
<i>Neolygus contaminatus</i>	1911	Birklands and Bilhaugh	Ref: 1
	1911	Birklands West and Ollerton Corner	Ref: 1
	1912	Birklands and Bilhaugh	Ref: 1
	1912	Birklands West and Ollerton Corner	Ref: 1
	1913	Birklands West and Ollerton Corner	Ref: 1
	1913	Birklands and Bilhaugh	Ref: 1
	1914	Birklands and Bilhaugh	Ref: 1
	1914	Birklands West and Ollerton Corner	Ref: 1
<i>Orthonotus rufifrons</i>	1914	Birklands West and Ollerton Corner	Ref: 1
<i>Orthops campestris</i>	1912	Birklands and Bilhaugh	Ref: 1
<i>Orthotylus ericetorum</i>	1912	Birklands and Bilhaugh	Ref: 1
	1913	Birklands and Bilhaugh	Ref: 1
	1914	Birklands and Bilhaugh	Ref: 1
<i>Orthotylus viridinervis</i>	Carr, L.A. 1912	Birklands West and Ollerton Corner	Ref: 1
<i>Phylus palliceps</i>	1911	Birklands and Bilhaugh	Ref: 1
<i>Phytocoris longipennis</i>	1912	Birklands and Bilhaugh	Ref: 1
<i>Phytocoris pini</i>	Determined by Butler, E.A. 1914	Birklands and Bilhaugh	Ref: 1
<i>Phytocoris tiliae</i>	1911	Birklands and Bilhaugh	Ref: 1
	1912	Birklands and Bilhaugh	Ref: 1
<i>Phytocoris ulmi</i>		Birklands and Bilhaugh	Ref: 1
<i>Phytocoris varipes</i>	Carr, L.A. and Robinson 1912	Birklands and Bilhaugh	Ref: 1
<i>Pinalitus rubricatus</i>	1912	Birklands West and Ollerton Corner	Ref: 1
<i>Psallus ambiguus</i>	Carr, L.A. 1914	Birklands West and Ollerton Corner	Ref: 1
<i>Psallus betuleti</i>	Thornley 1901	Birklands and Bilhaugh	Ref: 1
	Carr, L.A. 1911	Birklands and Bilhaugh	Ref: 1

	<i>Psallus fallenii</i>	1912	Birklands and Bilhaugh	Ref: 1
		1914	Birklands and Bilhaugh	Ref: 1
	<i>Psallus variabilis</i>	1911	Birklands and Bilhaugh	Ref: 1
		1911	Birklands West and Ollerton Corner	Ref: 1
		1912	Birklands and Bilhaugh	Ref: 1
		1912	Birklands West and Ollerton Corner	Ref: 1
		1913	Birklands West and Ollerton Corner	Ref: 1
		1913	Birklands and Bilhaugh	Ref: 1
		1914	Birklands and Bilhaugh	Ref: 1
		1914	Birklands West and Ollerton Corner	Ref: 1
	<i>Psallus varians</i>	1912	Birklands West and Ollerton Corner	Ref: 1
	<i>Stenotus binotatus</i>	1912	Birklands West and Ollerton Corner	Ref: 1
	<i>Trigonotylus ruficornis</i>	1911	Birklands and Bilhaugh	Ref: 1
		1914	Birklands and Bilhaugh	Ref: 1
Nabidae				
	<i>Himacerus major</i> Grey Damsel Bug	1912	Birklands and Bilhaugh	Ref: 1
	<i>Nabus ericetorum</i> Heath Damsel Bug	1912	Birklands and Bilhaugh	Ref: 1
		1913	Birklands and Bilhaugh	Ref: 1
		1914	Birklands and Bilhaugh	Ref: 1
	<i>Nabis ferus</i> Field Damsel Bug	1912	Birklands and Bilhaugh	Ref: 1
		1913	Birklands and Bilhaugh	Ref: 1
	<i>Nabis limbatus</i> Marsh Damsel Bug	1912	Birklands and Bilhaugh	Ref: 1
Anthocoridae				
	<i>Acompocoris pygmaeus</i>	1914	Birklands and Bilhaugh	Ref: 1
	<i>Anthocoris confusus</i>		Birklands and Bilhaugh	Ref: 1
	<i>Anthocoris nemoralis</i>		Birklands and Bilhaugh	Ref: 1
	<i>Lyctocoris canpestris</i>	1914	Birklands West and Ollerton Corner	Ref: 1

	Debris Bug			
	<i>Orius laevigatus</i>		Birklands and Bilhaugh	Ref: 1
	<i>Xylocoris cursitans</i>	Blatch, W.G.	Birklands and Bilhaugh	Ref: 1
Cimicidae	<i>Cimex columbarius</i>	Willoughby Ellis, H.	Birklands and Bilhaugh	Ref: 1
Lygaeidae	<i>Cymus glandicolor</i>		Birklands and Bilhaugh	Ref: 1
	<i>Drymus brunneus</i>	1912	Birklands and Bilhaugh	Ref: 1
	<i>Drymus sylvaticus</i>	1914 1917	Birklands and Bilhaugh Birklands West and Ollerton Corner	Ref: 1 Ref: 10
	<i>Scolopostethus decoratus</i>	1912 1913 1914	Birklands and Bilhaugh Birklands and Bilhaugh Birklands West and Ollerton Corner	Ref: 1 Ref: 1 Ref: 1
	<i>Scolopostethus thomsoni</i>	1912	Birklands and Bilhaugh	Ref: 1
	<i>Stygnocoris rusticus</i>	1912	Birklands and Bilhaugh	Ref: 1
	<i>Stygnocoris sabulosus</i>	1913 1917	Birklands and Bilhaugh Birklands West and Ollerton Corner	Ref: 1 Ref: 10
	<i>Trapezonotus arenarius</i>	1913 1917 1918	Birklands and Bilhaugh Birklands West and Ollerton Corner Birklands West and Ollerton Corner	Ref: 1 Ref: 10 Ref: 10
Alydidae	<i>Alydus calcaratus</i>		Birklands and Bilhaugh	Ref: 1
	<i>Myrmus miriformis</i>	Robinson. 1915	Birklands and Bilhaugh	Ref: 10
Cydnidae	<i>Tritometus bicolor</i> Pied Shieldbug	Ryles, W.E.	Birklands and Bilhaugh	Ref: 1

Pentatomidae

<i>Palomena prasina</i> Green Shieldbug	Roebuck, A. 1932	Birklands and Bilhaugh	Ref: 10
<i>Pentatoma rufipes</i> Forest Bug	Carr, L.A. 1914	Birklands and Bilhaugh	Ref: 1
<i>Piezodorus lituratus</i> Gorse Shieldbug	Ryles, W.E.	Birklands and Bilhaugh	Ref: 1

Acanthosomatidae

<i>Elasmostethus Interstinctus</i> Birch Shieldbug	Ryles, W.E.	Birklands and Bilhaugh	Ref: 1
<i>Elasmucha grisea</i> Parent Bug	Ryles, W.E.	Birklands and Bilhaugh	Ref: 1

Homoptera Cicadas, Froghoppers, Treehoppers, Planthoppers and Leafhoppers

Cercopidae

<i>Aphrophora alni</i>		Birklands West and Ollerton Corner	Ref: 1
<i>Cercopis vulnerata</i>	1912	Birklands and Bilhaugh	Ref: 1
<i>Neophilaenus exclamationis</i>		Birklands and Bilhaugh	Ref: 1
<i>Philaenus spumarius</i> Common Froghopper		Birklands and Bilhaugh	Ref: 1

Membracidae

<i>Centrotus cornutus</i>	1912	Birklands and Bilhaugh	Ref: 1
---------------------------	------	------------------------	--------

Cicadellidae

<i>Adarrus ocellaris</i>		Birklands West and Ollerton Corner	Ref: 1
<i>Agallia consobrina</i>		Birklands and Bilhaugh	Ref: 1

<i>Alebra albostriella</i>	1911	Birklands and Bilhaugh	Ref: 1
	1912	Birklands and Bilhaugh	Ref: 1
<i>Allygus mixtus</i>	1912	Birklands West and Ollerton Corner	Ref: 1
<i>Aphrodes albifrons</i>	1912	Birklands and Bilhaugh	Ref: 1
	1912	Birklands West and Ollerton Corner	Ref: 1
	1913	Birklands and Bilhaugh	Ref: 1
	1913	Birklands West and Ollerton Corner	Ref: 1
	1914	Birklands and Bilhaugh	Ref: 1
	1914	Birklands West and Ollerton Corner	Ref: 1
<i>Aphrodes bifasciatus</i>	Carr, L.A. 1912	Birklands West and Ollerton Corner	Ref: 1
<i>Aphrodes flavostriatus</i>	1912	Birklands West and Ollerton Corner	Ref: 1
<i>Aphrodes histrionicus</i>	Carr, L.A. 1912	Birklands West and Ollerton Corner	Ref: 1
<i>Arocephalus punctum</i>	1911	Birklands West and Ollerton Corner	Ref: 1
	1912	Birklands and Bilhaugh	Ref: 1
	1913	Birklands and Bilhaugh	Ref: 1
	1914	Birklands and Bilhaugh	Ref: 1
<i>Cicadula quadrinotata</i>		Birklands West and Ollerton Corner	Ref: 1
		Birklands and Bilhaugh	Ref: 1
<i>Deltocephalus pulicaris</i>		Birklands and Bilhaugh	Ref: 1
<i>Dikraneura variata</i>	1912	Birklands and Bilhaugh	Ref: 1
	1913	Birklands and Bilhaugh	Ref: 1
<i>Edwardsiana rosae</i>		Birklands and Bilhaugh	Ref: 1
		Birklands West and Ollerton Corner	Ref: 1
<i>Elymana sulphurella</i>		Birklands West and Ollerton Corner	Ref: 1
<i>Eupteryx aurata</i>		Birklands and Bilhaugh	Ref: 1
Potato Leafhopper			
<i>Eupteryx stachydearum</i>		Birklands and Bilhaugh	Ref: 1
<i>Eupteryx urticae</i>		Birklands and Bilhaugh	Ref: 1
		Birklands and Bilhaugh	Ref: 1
<i>Eurhadina concinna</i>		Birklands and Bilhaugh	Ref: 1
<i>Eurhadina pulchella</i>		Birklands and Bilhaugh	Ref: 1

<i>Euscelis incisus</i>	1914	Birklands and Bilhaugh	Ref: 1
<i>Evacanthus acuminatus</i>	1912	Birklands West and Ollerton Corner	Ref: 1
<i>Fagocyba carri</i>	Carr, J.W. 1912	Birklands and Bilhaugh	Ref: 1
<i>Hardya melanopsis</i>	1913	Birklands and Bilhaugh	Ref: 1
<i>Kybos smaragdula</i>		Birklands and Bilhaugh	Ref: 1
		Birklands West and Ollerton Corner	Ref: 1
<i>Ledra aurita</i>	1912	Birklands and Bilhaugh	Ref: 1
<i>Macropsis scotti</i>	Carr, L.A. 1912	Birklands West and Ollerton Corner	Ref: 1
<i>Macropsis scutellata</i>	1912	Birklands West and Ollerton Corner	Ref: 1
<i>Megophthalmus scabripennis</i>	1912	Birklands West and Ollerton Corner	Ref: 1
	1914	Birklands West and Ollerton Corner	Ref: 1
<i>Megophthalmus scanicus</i>		Birklands West and Ollerton Corner	Ref: 1
<i>Oncopsis alni</i>	1911	Birklands and Bilhaugh	Ref: 1
<i>Oncopsis flavicollis</i>	1901	Birklands and Bilhaugh	Ref: 1
	1914	Birklands and Bilhaugh	Ref: 1
<i>Oncopsis tristis</i>	1911	Birklands and Bilhaugh	Ref: 1
	1912	Birklands and Bilhaugh	Ref: 1
	1913	Birklands and Bilhaugh	Ref: 1
<i>Recilia coronifera</i>	Carr, J.W. 1914	Birklands and Bilhaugh	Ref: 1
<i>Rhytistylus proceps</i>	1913	Birklands and Bilhaugh	Ref: 1
<i>Speudotettix subfuscus</i>	1911	Birklands and Bilhaugh	Ref: 1
	1913	Birklands and Bilhaugh	Ref: 1
<i>Streptanus marginatus</i>	1914	Birklands and Bilhaugh	Ref: 1
<i>Streptanus sordidus</i>	1912	Birklands West and Ollerton Corner	Ref: 1
<i>Thamnotettix confinis</i>	Carr, J.W. 1914	Birklands and Bilhaugh	Ref: 1
<i>Typhlocyba quercus</i>		Birklands and Bilhaugh	Ref: 1

<i>Ulopa reticulata</i>	1912	Birklands and Bilhaugh	Ref: 1
	1912	Birklands West and Ollerton Corner	Ref: 1
	1914	Birklands West and Ollerton Corner	Ref: 1
	1914	Birklands and Bilhaugh	Ref: 1
<i>Zygina angusta</i>	Carr, J.W. 1915	Birklands West and Ollerton Corner	Ref: 10

Cixiidae

<i>Cixius nervosus</i>		Birklands and Bilhaugh	Ref: 1
<i>Tachycixius pilosus</i>	1912	Birklands and Bilhaugh	Ref: 1

Delphacidae

<i>Dicranotropis hamata</i>	1912	Birklands and Bilhaugh	Ref: 1
	1912	Birklands West and Ollerton Corner	Ref: 1
<i>Javesella discolor</i>		Birklands West and Ollerton Corner	Ref: 1
<i>Javesella pellucida</i>		Birklands and Bilhaugh	Ref: 1
<i>Muellerianella fairmairei</i>	1914	Birklands West and Ollerton Corner	Ref: 1
<i>Stenocranus minutus</i>	1912	Birklands and Bilhaugh	Ref: 1

Homoptera Jumping Plant Lice (Psyllids)

<i>Arytaina genistae</i> Broom Psyllid		Birklands and Bilhaugh	Ref: 10
<i>Cacopsylla melanoneura</i>	1914	Birklands and Bilhaugh	Ref: 10
<i>Cacopsylla peregrina</i>		Birklands and Bilhaugh	Ref: 1
<i>Cacopsylla visci</i>	1912	Birklands and Bilhaugh	Ref: 1
<i>Chamaepsylla hartigii</i>	1911	Birklands and Bilhaugh	Ref: 1

3.0 Sherwood Forest Hemiptera. Complete site species list and records from the late 1800's to 2010

Heteroptera Shieldbugs, Squashbugs, Ground Bugs, Stilt Bugs, Assassin Bugs, Damsel Bugs, Lacebugs, Mirid Bugs and Water Bugs.

Nepidae

<i>Nepa cinerea</i> Water Scorpion	Carr, L.A. Merritt, R. 2000 Pendleton, T.A. and Pendleton, D.T. 2009	Birklands West and Ollerton Corner Birklands and Bilhaugh / Budby SF Birklands and Bilhaugh / Budby SF	Ref: 1 Ref: 96 Ref: 36
<i>Ranatra linearis</i> Water Stick Insect	Merritt, R. 2000	Birklands and Bilhaugh / Budby SF	Ref: 96

Corixidae

<i>Cymatia coleoptrata</i>	Merritt, R. 2003	Birklands and Bilhaugh / Budby SF	Ref: 96
<i>Callicorixa praeusta</i>	Merritt, R. 2000 Merritt, R. 2003	Birklands and Bilhaugh / Budby SF Birklands and Bilhaugh / Budby SF	Ref: 96 Ref: 96
<i>Corixa punctata</i>	Merritt, R. 2000	Birklands and Bilhaugh / Budby SF	Ref: 96
<i>Hesperocorixa linnaei</i>	Merritt, R. 2000	Birklands and Bilhaugh / Budby SF	Ref: 96
<i>Hesperocorixa sahlbergi</i>	Merritt, R. 1999 Merritt, R. 2003	Birklands and Bilhaugh / Budby SF Birklands and Bilhaugh / Budby SF	Ref: 96 Ref: 96
<i>Sigara distincta</i>	Merritt, R. 2000	Birklands and Bilhaugh / Budby SF	Ref: 96
<i>Sigara dorsalis</i>	Merritt, R. 2000	Birklands and Bilhaugh / Budby SF	Ref: 96
<i>Sigara falleni</i>	Merritt, R. 2000	Birklands and Bilhaugh / Budby SF	Ref: 96
<i>Sigara fossarum</i>	Merritt, R. 2000	Birklands and Bilhaugh / Budby SF	Ref: 96
<i>Sagara lateralis</i>	Merritt, R. 2003	Birklands and Bilhaugh / Budby SF	Ref: 96
<i>Sagara limitata</i>	Merritt, R. 2003	Birklands and Bilhaugh / Budby SF	Ref: 96

Naucoridae

<i>Ilyocoris cimicoides</i>	Merritt, R. 2000	Birklands and Bilhaugh / Budby SF	Ref: 96
-----------------------------	------------------	-----------------------------------	---------

Notonectidae

<i>Notonecta glauca</i>	Merritt, R. 1998	Birklands West / Clipstone Old Qtr	Ref: 96
	Merritt, R. 2000	Birklands and Bilhaugh / Budby SF	Ref: 96
	Merritt, R. 2003	Birklands and Bilhaugh / Budby SF	Ref: 96
<i>Notonecta viridis</i>	Merritt, R. 2000	Birklands and Bilhaugh / Budby SF	Ref: 96
	Merritt, R. 2003	Birklands and Bilhaugh / Budby SF	Ref: 96

Veliidae

<i>Microvelia reticulata</i>	Merritt, R. 2003	Birklands and Bilhaugh / Budby SF	Ref: 96
<i>Velia caprai</i>	Merritt, R. 2000	Birklands and Bilhaugh / Budby SF	Ref: 96

Gerridae

<i>Gerris lacustris</i>	Merritt, R. 1999	Birklands and Bilhaugh / Budby SF	Ref: 96
	Merritt, R. 2000	Birklands and Bilhaugh / Budby SF	Ref: 96
	Pendleton, T.A. and Pendleton, D.T. 2009	Birklands and Bilhaugh / Budby SF	Ref: 36
	Pendleton, T.A. and Pendleton, D.T. 2010	Birklands and Bilhaugh / Budby SF	Ref: 36
<i>Gerris odontogaster</i>	Merritt, R. 2003	Birklands and Bilhaugh / Budby SF	Ref: 96

Saldidae

<i>Chartoscirta cocksii</i>	Carr, L.A. 1914	Birklands West and Ollerton Corner	Ref: 1
<i>Macrosaldula scotica</i>	Carr, L.A. 1914	Birklands West and Ollerton Corner	Ref: 1
<i>Saldula orthochila</i>	1911	Birklands West and Ollerton Corner	Ref: 1
	1914	Birklands West and Ollerton Corner	Ref: 1
<i>Saldula saltatoria</i> Common Shore Bug	Carr, L.A. 1914	Birklands West and Ollerton Corner	Ref: 1
		Birklands and Bilhaugh / Budby SF	Ref: 10
	Godfrey, A. 2004	Birklands West / Sherwood Heath	Ref: 105

Tingidae

<i>Acalypta parvula</i>	Godfrey, A. 2006	Birklands West / Sherwood Heath	Ref: 108
<i>Agramma laetum</i>	Godfrey, A. 2006	Birklands West / Sherwood Heath	Ref: 108
<i>Derephysia foliacea</i>	1914	Birklands West and Ollerton Corner	Ref: 1

<i>Dictyonota strichnocera</i>	1912	Birklands and Bilhaugh	Ref: 1
Gorse Lacebug	1914	Birklands and Bilhaugh	Ref: 1
	Budworth, D. 2004	Birklands and Bilhaugh / Budby SF	Ref: 96
	Pendleton, T.A. and Pendleton, D.T. 2009	Birklands and Bilhaugh	Ref: 36

<i>Tingis cardui</i>	1913	Birklands and Bilhaugh	Ref: 1
Spear Thistle Lacebug	1914	Birklands and Bilhaugh	Ref: 1
	Godfrey, A. 2004	Birklands West / Sherwood Heath	Ref: 105
	Godfrey, A. 2006	Birklands West / Sherwood Heath	Ref: 108
	Pendleton, T.A. and Pendleton, D.T. 2009	Birklands and Bilhaugh / Budby SF	Ref: 36

Microphysidae

<i>Myrmedobia distinguenda</i>	Bedwell, E.C. 1913	Birklands and Bilhaugh	Ref: 10
--------------------------------	--------------------	------------------------	---------

Miridae

<i>Adelphocoris lineolatus</i>	Ryles, W.E.	Birklands and Bilhaugh	Ref: 1
Lucerne Bug	Pendleton, T.A. and Pendleton, D.T. 2009	Birklands West / Clipstone Old Qtr	Ref: 36
<i>Alloeotomus gothicus</i>	Pendleton, T.A. and Pendleton, D.T. 2009	Birklands and Bilhaugh / Budby SF	Ref: 36
<i>Bryocoris pteridis</i>	1912	Birklands West and Ollerton Corner	Ref: 1
<i>Calocoris alpestris</i>	Pendleton, T.A. and Pendleton, D.T. 2010	Birklands and Bilhaugh	Ref: 36
<i>Calocoris roseomaculatus</i>	Godfrey, A. 2006	Birklands West / Sherwood Heath	Ref: 108
<i>Camptozygum aequale</i>	1914	Birklands and Bilhaugh	Ref: 1
<i>Campyloneuea virgula</i>	1912	Birklands West and Ollerton Corner	Ref: 1
<i>Capsus ater</i>	1911	Birklands and Bilhaugh	Ref: 1
	1911	Birklands West and Ollerton Corner	Ref: 1
	1912	Birklands and Bilhaugh	Ref: 1
	1912	Birklands West and Ollerton Corner	Ref: 1
	1913	Birklands West and Ollerton Corner	Ref: 1
	1913	Birklands and Bilhaugh	Ref: 1
	1914	Birklands and Bilhaugh	Ref: 1
	1914	Birklands West and Ollerton Corner	Ref: 1
	Pendleton, T.A. and Pendleton, D.T. 2008	Birklands and Bilhaugh	Ref: 36
	Pendleton, T.A. and Pendleton, D.T. 2009	Birklands and Bilhaugh	Ref: 36
	Pendleton, T.A. and Pendleton, D.T. 2010	Birklands and Bilhaugh	Ref: 36

	Pendleton, T.A. and Pendleton, D.T. 2010	Birklands and Bilhaugh / Budby SF	Ref: 36
<i>Charagochilus gyllenhalii</i>	Godfrey, A. 2006	Birklands West / Sherwood Heath	Ref: 108
<i>Closterotomus fulvomaculatus</i>	1912	Birklands West and Ollerton Corner	Ref: 1
<i>Closterotomus norwegicus</i>	Pendleton, T.A. and Pendleton, D.T. 2009	Birklands and Bilhaugh	Ref: 36
<i>Cyllecoris histrionius</i>	1911	Birklands and Bilhaugh	Ref: 1
	1911	Birklands West and Ollerton Corner	Ref: 1
	1912	Birklands and Bilhaugh	Ref: 1
	1912	Birklands West and Ollerton Corner	Ref: 1
	Pendleton, T.A. and Pendleton, D.T. 2008	Birklands and Bilhaugh	Ref: 36
	Pendleton, T.A. and Pendleton, D.T. 2010	Birklands and Bilhaugh	Ref: 36
<i>Deraeocoris lutescens</i>	Alexander, K.N.A. 2009/2010	Birklands West and Ollerton Corner	Ref: 118
<i>Deraeocoris ruber</i>	Pendleton, T.A. and Pendleton, D.T. 2008	Birklands and Bilhaugh	Ref: 36
	Pendleton, T.A. and Pendleton, D.T. 2008	Birklands West / Clipstone Old Qtr	Ref: 36
	Pendleton, T.A. and Pendleton, D.T. 2009	Birklands and Bilhaugh / Budby SF	Ref: 36
	Pendleton, T.A. and Pendleton, D.T. 2009	Birklands and Bilhaugh	Ref: 36
	Pendleton, T.A. and Pendleton, D.T. 2009	Birklands West / Clipstone Old Qtr	Ref: 36
	Pendleton, T.A. and Pendleton, D.T. 2010	Birklands and Bilhaugh	Ref: 36
	Pendleton, T.A. and Pendleton, D.T. 2010	Birklands West / Clipstone Old Qtr	Ref: 36
	Pendleton, T.A. and Pendleton, D.T. 2010	Birklands and Bilhaugh / Budby SF	Ref: 119
<i>Dicyphus globulifer</i>	Robinson. 1915	Birklands and Bilhaugh	Ref: 10
<i>Dicyphus stachydis</i>		Birklands and Bilhaugh	Ref: 1
<i>Dryophilocorus flavoquadrimaculatus</i>	1912	Birklands and Bilhaugh	Ref: 1
	Pendleton, T.A. and Pendleton, D.T. 2009	Birklands and Bilhaugh	Ref: 36
	Alexander, K.N.A. 2009/2010	Birklands West and Ollerton Corner	Ref: 118
	Pendleton, T.A. and Pendleton, D.T. 2010	Birklands and Bilhaugh	Ref: 36
<i>Grypocoris stysi</i>		Birklands West and Ollerton Corner	Ref: 1
<i>Harpocera thoracica</i>	Carr, L.A. 1912	Birklands and Bilhaugh	Ref: 1
	Carr, L.A. 1914	Birklands West and Ollerton Corner	Ref: 1
	Carr, L.A. 1912	Birklands West and Ollerton Corner	Ref: 1
	Carr, L.A. 1914	Birklands and Bilhaugh	Ref: 1
	Pendleton, T.A. and Pendleton, D.T. 2008	Birklands and Bilhaugh	Ref: 36
	Pendleton, T.A. and Pendleton, D.T. 2009	Birklands and Bilhaugh	Ref: 36
	Pendleton, T.A. and Pendleton, D.T. 2009	Birklands West / Clipstone Old Qtr	Ref: 36
	Alexander, K.N.A. 2009/2010	Birklands West and Ollerton Corner	Ref: 118

	Pendleton, T.A. and Pendleton, D.T. 2010	Birklands and Bilhaugh	Ref: 36
	Pendleton, T.A. and Pendleton, D.T. 2010	Birklands West / Clipstone Old Qtr	Ref: 36
<i>Leptopterna dolobrata</i>		Birklands and Bilhaugh	Ref: 1
Meadow Plant Bug		Birklands West and Ollerton Corner	Ref: 1
	Godfrey, A. 2006	Birklands West / Sherwood Heath	Ref: 108
	Pendleton, T.A. and Pendleton, D.T. 2008	Birklands and Bilhaugh	Ref: 36
	Pendleton, T.A. and Pendleton, D.T. 2008	Birklands West / Clipstone Old Qtr	Ref: 36
	Pendleton, T.A. and Pendleton, D.T. 2009	Birklands and Bilhaugh	Ref: 36
	Pendleton, T.A. and Pendleton, D.T. 2009	Birklands and Bilhaugh / Budby SF	Ref: 36
	Pendleton, T.A. and Pendleton, D.T. 2009	Birklands West / Clipstone Old Qtr	Ref: 36
	Pendleton, T.A. and Pendleton, D.T. 2010	Birklands and Bilhaugh	Ref: 36
	Pendleton, T.A. and Pendleton, D.T. 2010	Birklands West / Clipstone Old Qtr	Ref: 36
	Pendleton, T.A. and Pendleton, D.T. 2010	Birklands and Bilhaugh / Budby SF	Ref: 119
<i>Leptopterna ferrugata</i>	1912	Birklands West and Ollerton Corner	Ref: 1
<i>Liocoris tripustulatus</i>	1912	Birklands West and Ollerton Corner	Ref: 1
	Pendleton, T.A. and Pendleton, D.T. 2010	Birklands and Bilhaugh	Ref: 36
<i>Lygocoris pabulinus</i>		Birklands and Bilhaugh	Ref: 1
Common Green Capsid			
<i>Lygus pratensis</i>	Godfrey, A. 2006	Birklands West / Sherwood Heath	Ref: 108
<i>Mecomma ambulans</i>		Birklands and Bilhaugh	Ref: 1
		Birklands West and Ollerton Corner	Ref: 1
<i>Miris striatus</i>	1904	Birklands and Bilhaugh	Ref: 1
	1912	Birklands West and Ollerton Corner	Ref: 1
	1912	Birklands and Bilhaugh	Ref: 1
	Pendleton, T.A. and Pendleton, D.T. 2008	Birklands and Bilhaugh	Ref: 36
	Pendleton, T.A. and Pendleton, D.T. 2009	Birklands and Bilhaugh	Ref: 36
	Pendleton, T.A. and Pendleton, D.T. 2010	Birklands and Bilhaugh	Ref: 36
<i>Monalocoris filicis</i>		Birklands and Bilhaugh	Ref: 1
Bracken Bug			
<i>Neolygus contaminatus</i>	1911	Birklands and Bilhaugh	Ref: 1
	1911	Birklands West and Ollerton Corner	Ref: 1
	1912	Birklands and Bilhaugh	Ref: 1
	1912	Birklands West and Ollerton Corner	Ref: 1
	1913	Birklands West and Ollerton Corner	Ref: 1
	1913	Birklands and Bilhaugh	Ref: 1
	1914	Birklands and Bilhaugh	Ref: 1

	1914	Birklands West and Ollerton Corner	Ref: 1
<i>Notostria elongata</i>	Pendleton, T.A. and Pendleton, D.T. 2010	Birklands and Bilhaugh / Budby SF	Ref: 36
<i>Orthonotus rufifrons</i>	1914	Birklands West and Ollerton Corner	Ref: 1
<i>Orthops campestris</i>	1912	Birklands and Bilhaugh	Ref: 1
<i>Orthotylus ericetorum</i>	1912	Birklands and Bilhaugh	Ref: 1
	1913	Birklands and Bilhaugh	Ref: 1
	1914	Birklands and Bilhaugh	Ref: 1
	Budworth, D. 2004	Birklands and Bilhaugh / Budby SF	Ref: 96
	Godfrey, A. 2006	Birklands West / Sherwood Heath	Ref: 108
	Pendleton, T.A. and Pendleton, D.T. 2010	Birklands and Bilhaugh / Budby SF	Ref: 119
<i>Orthotylus viridinervis</i>	Carr, L.A. 1912	Birklands West and Ollerton Corner	Ref: 1
<i>Phylus melanocephalus</i>	Thornley 1901	Birklands and Bilhaugh	Ref: 36
	Pendleton, T.A. and Pendleton, D.T. 2008	Birklands and Bilhaugh	Ref: 36
	Pendleton, T.A. and Pendleton, D.T. 2009	Birklands and Bilhaugh	Ref: 36
	Pendleton, T.A. and Pendleton, D.T. 2010	Birklands and Bilhaugh	Ref: 36
<i>Phylus palliceps</i>	1911	Birklands and Bilhaugh	Ref: 1
<i>Phytocoris longipennis</i>	1912	Birklands and Bilhaugh	Ref: 1
<i>Phytocoris pini</i>	Determined by Butler, E.A. 1914	Birklands and Bilhaugh	Ref: 1
<i>Phytocoris tiliae</i>	1911	Birklands and Bilhaugh	Ref: 1
	1912	Birklands and Bilhaugh	Ref: 1
	Pendleton, T.A. and Pendleton, D.T. 2009	Birklands and Bilhaugh / Budby SF	Ref: 36
	Pendleton, T.A. and Pendleton, D.T. 2010	Birklands and Bilhaugh / Budby SF	Ref: 119
<i>Phytocoris ulmi</i>		Birklands and Bilhaugh	Ref: 1
<i>Phytocoris varipes</i>	Carr, L.A. and Robinson 1912	Birklands and Bilhaugh	Ref: 1
	Pendleton, T.A. and Pendleton, D.T. 2009	Birklands and Bilhaugh	Ref: 36
	Pendleton, T.A. and Pendleton, D.T. 2010	Birklands and Bilhaugh / Budby SF	Ref: 119
<i>Pinalitus rubricatus</i>	1912	Birklands West and Ollerton Corner	Ref: 1
<i>Psallus ambiguus</i>	Carr, L.A. 1914	Birklands West and Ollerton Corner	Ref: 1
<i>Psallus betuleti</i>	Thornley 1901	Birklands and Bilhaugh	Ref: 1
	Carr, L.A. 1911	Birklands and Bilhaugh	Ref: 1

<i>Psallus fallenii</i>	1912	Birklands and Bilhaugh	Ref: 1
	1914	Birklands and Bilhaugh	Ref: 1
<i>Psallus variabilis</i>	1911	Birklands and Bilhaugh	Ref: 1
	1911	Birklands West and Ollerton Corner	Ref: 1
	1912	Birklands and Bilhaugh	Ref: 1
	1912	Birklands West and Ollerton Corner	Ref: 1
	1913	Birklands West and Ollerton Corner	Ref: 1
	1913	Birklands and Bilhaugh	Ref: 1
	1914	Birklands and Bilhaugh	Ref: 1
	1914	Birklands West and Ollerton Corner	Ref: 1
<i>Psallus varians</i>	1912	Birklands West and Ollerton Corner	Ref: 1
<i>Pseudoloxops coccineus</i>	Godfrey, A. 2006	Birklands West / Sherwood Heath	Ref: 108
<i>Rhabdormiris striatellus</i>	Pendleton, T.A. and Pendleton, D.T. 2010	Birklands and Bilhaugh	Ref: 36
<i>Stenodema calcarata</i>	Godfrey, A. 2004	Birklands West / Sherwood Heath	Ref: 105
	Godfrey, A. 2006	Birklands West / Sherwood Heath	Ref: 108
<i>Stenodema laevigata</i>	Godfrey, A. 2006	Birklands West / Sherwood Heath	Ref: 108
	Pendleton, T.A. and Pendleton, D.T. 2010	Birklands and Bilhaugh / Budby SF	Ref: 119
<i>Stenotus binotatus</i>	1912	Birklands West and Ollerton Corner	Ref: 1
<i>Trigonotylus ruficornis</i>	1911	Birklands and Bilhaugh	Ref: 1
	1914	Birklands and Bilhaugh	Ref: 1

Nabidae

<i>Himacerus apterus</i> Tree Damsel Bug	Godfrey, A. 2006	Birklands West / Sherwood Heath	Ref: 108
	Pendleton, T.A. and Pendleton, D.T. 2008	Birklands and Bilhaugh	Ref: 36
	Pendleton, T.A. and Pendleton, D.T. 2008	Birklands West / Clipstone Old Qtr	Ref: 36
	Pendleton, T.A. and Pendleton, D.T. 2009	Birklands and Bilhaugh	Ref: 36
	Pendleton, T.A. and Pendleton, D.T. 2009	Birklands West / Clipstone Old Qtr	Ref: 36
	Alexander, K.N.A. 2009/2010	Birklands West and Ollerton Corner	Ref: 118
	Pendleton, T.A. and Pendleton, D.T. 2010	Birklands and Bilhaugh	Ref: 36
	Pendleton, T.A. and Pendleton, D.T. 2010	Birklands and Bilhaugh / Budby SF	Ref: 119
	Pendleton, T.A. and Pendleton, D.T. 2010	Birklands West / Clipstone Old Qtr	Ref: 36
	<i>Himacerus boops</i>	Godfrey, A. 2006	Birklands West / Sherwood Heath

<i>Himacerus major</i> Grey Damselfly	1912 Godfrey, A. 2006	Birklands and Bilhaugh Birklands West / Sherwood Heath	Ref: 1 Ref: 108
<i>Himacerus mirmicoides</i> Ant Damselfly	Pendleton, T.A. and Pendleton, D.T. 2009 Pendleton, T.A. and Pendleton, D.T. 2010	Birklands and Bilhaugh / Budby SF Birklands and Bilhaugh	Ref: 36 Ref: 36
<i>Nabis ericetorum</i> Heath Damselfly	1912 1913 1914 Godfrey, A. 2006	Birklands and Bilhaugh Birklands and Bilhaugh Birklands and Bilhaugh Birklands West / Sherwood Heath	Ref: 1 Ref: 1 Ref: 1 Ref: 108
<i>Nabis ferus</i> Field Damselfly	1912 1913 Budworth, D. 2004 Godfrey, A. 2006 Pendleton, T.A. and Pendleton, D.T. 2010	Birklands and Bilhaugh Birklands and Bilhaugh Birklands and Bilhaugh / Budby SF Birklands West / Sherwood Heath Birklands and Bilhaugh / Budby SF	Ref: 1 Ref: 1 Ref: 96 Ref: 108 Ref: 119
<i>Nabis flavomarginatus</i> Broad Damselfly	Godfrey, A. 2006 Alexander, K.N.A. 2009/2010	Birklands West / Sherwood Heath Birklands West and Ollerton Corner	Ref: 108 Ref: 118
<i>Nabis limbatus</i> Marsh Damselfly	1912 Godfrey, A. 2006 Pendleton, T.A. and Pendleton, D.T. 2010	Birklands and Bilhaugh Birklands West / Sherwood Heath Birklands and Bilhaugh / Budby SF	Ref: 1 Ref: 108 Ref: 119
<i>Nabis rugosus</i> Common Damselfly	Godfrey, A. 2006 Pendleton, T.A. and Pendleton, D.T. 2010	Birklands West / Sherwood Heath Birklands and Bilhaugh / Budby SF	Ref: 108 Ref: 119
Anthocoridae			
<i>Acompocoris pygmaeus</i>	1914	Birklands and Bilhaugh	Ref: 1
<i>Anthocoris confusus</i>		Birklands and Bilhaugh	Ref: 1
<i>Anthocoris nemoralis</i>	Alexander, K.N.A. 2009/2010	Birklands and Bilhaugh Birklands and Bilhaugh / Buck Gates	Ref: 1 Ref: 117
<i>Anthocoris nemorum</i>	Alexander, K.N.A. 2009/2010	Birklands West and Ollerton Corner	Ref: 118
<i>Lyctocoris campestris</i> Debris Bug	1914	Birklands West and Ollerton Corner	Ref: 1

	<i>Orius laevigatus</i>		Birklands and Bilhaugh	Ref: 1
	<i>Xylocoris cursitans</i>	Blatch, W.G. Jones. 1924	Birklands and Bilhaugh Birklands and Bilhaugh	Ref: 1 Ref: 10
Cimicidae	<i>Cimex columbarius</i>	Willoughby Ellis, H.	Birklands and Bilhaugh	Ref: 1
Reduviidae	<i>Empicoris vagabundus</i>	Alexander, K.N.A. 2009/2010 Pendleton, T.A. and Pendleton, D.T. 2010	Birklands and Bilhaugh Birklands and Bilhaugh / Budby SF	Ref: 117 Ref: 119
Aradidae	<i>Aradus depressus</i>	Pendleton, T.A. and Pendleton, D.T. 2009	Birklands and Bilhaugh	Ref: 36
Berytidae	<i>Metatropis rufescens</i>	Alexander, K.N.A. 2009/2010	Birklands and Bilhaugh	Ref: 118
Lygaeidae	<i>Cymus glandicolor</i>		Birklands and Bilhaugh	Ref: 1
	<i>Drymus brunneus</i>	1912 1917 Godfrey, A. 2006	Birklands and Bilhaugh Birklands West and Ollerton Corner Birklands West / Sherwood Heath	Ref: 1 Ref: 10 Ref: 108
	<i>Drymus sylvaticus</i>	1914 1917 Pendleton, T.A. and Pendleton, D.T. 2010	Birklands and Bilhaugh Birklands West and Ollerton Corner Birklands and Bilhaugh	Ref: 1 Ref: 10 Ref: 36
	<i>Gastrodes grossipes</i>	Pendleton, T.A. and Pendleton, D.T. 2009 Alexander, K.N.A. 2009/2010	Birklands and Bilhaugh / Budby SF Birklands West and Ollerton Corner	Ref: 36 Ref: 118
	<i>Ischnodemus sabuleti</i> European Chinchbug	Godfrey, A. 2006	Birklands West / Sherwood Heath	Ref: 108
	<i>Kleidocerys resedae</i> Birch Catkin Bug	Godfrey, A. 2003 Pendleton, T.A. and Pendleton, D.T. 2009 Alexander, K.N.A. 2009/2010 Pendleton, T.A. and Pendleton, D.T. 2010	Birklands West / Sherwood Heath Birklands and Bilhaugh / Budby SF Birklands West and Ollerton Corner Birklands and Bilhaugh	Ref: 104 Ref: 36 Ref: 118 Ref: 36

<i>Kleidocerys ericae</i>	Godfrey, A. 2006	Birklands West / Sherwood Heath	Ref: 108
<i>Peritrechus geniculatus</i>	Godfrey, A. 2004	Birklands West / Sherwood Heath	Ref: 105
<i>Scolopostethus decoratus</i>	1912	Birklands and Bilhaugh	Ref: 1
	1913	Birklands and Bilhaugh	Ref: 1
	1914	Birklands West and Ollerton Corner	Ref: 1
	Godfrey, A. 2006	Birklands West / Sherwood Heath	Ref: 108
<i>Scolopostethus thomsoni</i>	1912	Birklands and Bilhaugh	Ref: 1
<i>Stygnocoris rusticus</i>	1912	Birklands and Bilhaugh	Ref: 1
<i>Stygnocoris sabulosus</i>	1913	Birklands and Bilhaugh	Ref: 1
	1917	Birklands West and Ollerton Corner	Ref: 10
	Godfrey, A. 2004	Birklands West / Sherwood Heath	Ref: 105
	Godfrey, A. 2006	Birklands West / Sherwood Heath	Ref: 108
<i>Trapezonotus arenarius</i>	1913	Birklands and Bilhaugh	Ref: 1
	1917	Birklands West and Ollerton Corner	Ref: 10
	1918	Birklands West and Ollerton Corner	Ref: 10
<i>Trapezonotus desertus</i>	Pendleton, T.A. and Pendleton, D.T. 2010	Birklands and Bilhaugh	Ref: 36

Alydidae

<i>Alydus calcaratus</i>		Birklands and Bilhaugh	Ref: 1
--------------------------	--	------------------------	--------

Rhopalidae

<i>Chorosoma schillingi</i>	Budworth, D. 2004	Birklands and Bilhaugh / Budby SF	Ref: 96
	Godfrey, A. 2006	Birklands West / Sherwood Heath	Ref: 108
	Pendleton, T.A. and Pendleton, D.T. 2010	Birklands and Bilhaugh / Budby SF	Ref: 119
<i>Myrmus miriformis</i>	Robinson. 1915	Birklands and Bilhaugh	Ref: 10
	Godfrey, A. 2003	Birklands West / Sherwood Heath	Ref: 104
	Budworth, D. 2004	Birklands and Bilhaugh / Budby SF	Ref: 96
	Godfrey, A. 2006	Birklands West / Sherwood Heath	Ref: 108
	Pendleton, T.A. and Pendleton, D.T. 2009	Birklands and Bilhaugh / Budby SF	Ref: 36
	Pendleton, T.A. and Pendleton, D.T. 2010	Birklands and Bilhaugh / Budby SF	Ref: 119
<i>Rhopalus subrufous</i>	Godfrey, A. 2006	Birklands West / Sherwood Heath	Ref: 108
	Pendleton, T.A. and Pendleton, D.T. 2010	Birklands and Bilhaugh	Ref: 36

	<i>Stictopleurus punctatonervosus</i>	Pendleton, T.A. and Pendleton, D.T. 2010	Birklands and Bilhaugh / Budby SF	Ref: 36
Cydnidae				
	<i>Legnotus limbosus</i>	Pendleton, T.A. and Pendleton, D.T. 2009	Birklands and Bilhaugh	Ref: 36
	<i>Tritometus bicolor</i>	Ryles, W.E.	Birklands and Bilhaugh	Ref: 1
	Pied Shieldbug	Pendleton, T.A. and Pendleton, D.T. 2008	Birklands West / Clipstone Old Qtr	Ref: 36
		Pendleton, T.A. and Pendleton, D.T. 2009	Birklands and Bilhaugh	Ref: 36
		Pendleton, T.A. and Pendleton, D.T. 2010	Birklands and Bilhaugh	Ref: 36
Thyreocoridae				
	<i>Thyreocoris scarabaeoides</i>	Pendleton, T.A. and Pendleton, D.T. 2010	Birklands and Bilhaugh	Ref: 36
	Negro Bug			
Pentatomidae				
	<i>Aelia acuminata</i>	Budworth, D. 2004	Birklands and Bilhaugh / Budby SF	Ref: 96
	Bishop's Mitre	Godfrey, A. 2006	Birklands West / Sherwood Heath	Ref: 108
		Pendleton, T.A. and Pendleton, D.T. 2008	Birklands and Bilhaugh	Ref: 36
		Pendleton, T.A. and Pendleton, D.T. 2009	Birklands and Bilhaugh	Ref: 36
		Pendleton, T.A. and Pendleton, D.T. 2009	Birklands and Bilhaugh / Budby SF	Ref: 36
		Pendleton, T.A. and Pendleton, D.T. 2009	Birklands West / Clipstone Old Qtr	Ref: 36
		Pendleton, T.A. and Pendleton, D.T. 2010	Birklands and Bilhaugh	Ref: 36
		Pendleton, T.A. and Pendleton, D.T. 2010	Birklands West / Clipstone Old Qtr	Ref: 36
		Pendleton, T.A. and Pendleton, D.T. 2010	Birklands and Bilhaugh / Budby SF	Ref: 119
	<i>Dolycoris baccarum</i>	Godfrey, A. 2006	Birklands West / Sherwood Heath	Ref: 108
	Sloe Bug	Pendleton, T.A. and Pendleton, D.T. 2007	Birklands and Bilhaugh / Budby SF	Ref: 36
		Pendleton, T.A. and Pendleton, D.T. 2007	Birklands West / Clipstone Old Qtr	Ref: 36
		Pendleton, T.A. and Pendleton, D.T. 2008	Birklands West / Clipstone Old Qtr	Ref: 36
		Pendleton, T.A. and Pendleton, D.T. 2008	Birklands and Bilhaugh	Ref: 36
		Pendleton, T.A. and Pendleton, D.T. 2009	Birklands and Bilhaugh	Ref: 36
		Pendleton, T.A. and Pendleton, D.T. 2009	Birklands West / Clipstone Old Qtr	Ref: 36
		Pendleton, T.A. and Pendleton, D.T. 2009	Birklands and Bilhaugh / Budby SF	Ref: 36
		Pendleton, T.A. and Pendleton, D.T. 2010	Birklands and Bilhaugh	Ref: 36
		Pendleton, T.A. and Pendleton, D.T. 2010	Birklands West / Clipstone Old Qtr	Ref: 36
		Pendleton, T.A. and Pendleton, D.T. 2010	Birklands and Bilhaugh / Budby SF	Ref: 119
	<i>Eysarcoris venustissimus</i>	Pendleton, T.A. and Pendleton, D.T. 2008	Birklands West / Clipstone Old Qtr	Ref: 36
	Woundwort Shieldbug	Pendleton, T.A. and Pendleton, D.T. 2009	Birklands West / Clipstone Old Qtr	Ref: 36
		Pendleton, T.A. and Pendleton, D.T. 2010	Birklands West / Clipstone Old Qtr	Ref: 36

<i>Neottiglossa pusilla</i>	Budworth, D. 2004	Birklands and Bilhaugh / Budby SF	Ref: 96
	Pendleton, T.A. and Pendleton, D.T. 2009	Birklands and Bilhaugh	Ref: 36
	Pendleton, T.A. and Pendleton, D.T. 2009	Birklands West / Clipstone Old Qtr	Ref: 36
	Pendleton, T.A. and Pendleton, D.T. 2010	Birklands and Bilhaugh / Budby SF	Ref: 119
<i>Palomena prasina</i> Green Shieldbug	Roebuck, A. 1932	Birklands and Bilhaugh	Ref: 10
	Godfrey, A. 2006	Birklands West / Sherwood Heath	Ref: 108
	Pendleton, T.A. and Pendleton, D.T. 2007	Birklands West / Clipstone Old Qtr	Ref: 36
	Pendleton, T.A. and Pendleton, D.T. 2008	Birklands West / Clipstone Old Qtr	Ref: 36
	Pendleton, T.A. and Pendleton, D.T. 2008	Birklands and Bilhaugh	Ref: 36
	Pendleton, T.A. and Pendleton, D.T. 2009	Birklands West / Clipstone Old Qtr	Ref: 36
	Pendleton, T.A. and Pendleton, D.T. 2009	Birklands and Bilhaugh	Ref: 36
	Pendleton, T.A. and Pendleton, D.T. 2009	Birklands West / Sherwood Heath	Ref: 36
	Pendleton, T.A. and Pendleton, D.T. 2010	Birklands and Bilhaugh	Ref: 36
	Pendleton, T.A. and Pendleton, D.T. 2010	Birklands West / Clipstone Old Qtr	Ref: 36
	Pendleton, T.A. and Pendleton, D.T. 2010	Birklands and Bilhaugh / Budby SF	Ref: 36
	Pendleton, T.A. and Pendleton, D.T. 2010	Birklands West / Sherwood Heath	Ref: 36
<i>Pentatoma rufipes</i> Forest Bug	Carr, L.A. 1914	Birklands and Bilhaugh	Ref: 1
	Godfrey, A. 2004	Birklands West / Sherwood Heath	Ref: 105
	Godfrey, A. 2006	Birklands West / Sherwood Heath	Ref: 108
	Pendleton, T.A. and Pendleton, D.T. 2008	Birklands and Bilhaugh	Ref: 36
	Pendleton, T.A. and Pendleton, D.T. 2009	Birklands and Bilhaugh	Ref: 36
	Pendleton, T.A. and Pendleton, D.T. 2009	Birklands West / Clipstone Old Qtr	Ref: 36
	Pendleton, T.A. and Pendleton, D.T. 2009	Birklands and Bilhaugh / Budby SF	Ref: 36
	Alexander, K.N.A. 2009/2010	Birklands West and Ollerton Corner	Ref: 118
	Pendleton, T.A. and Pendleton, D.T. 2010	Birklands and Bilhaugh	Ref: 36
	Pendleton, T.A. and Pendleton, D.T. 2010	Birklands West / Clipstone Old Qtr	Ref: 36
	Pendleton, T.A. and Pendleton, D.T. 2010	Birklands and Bilhaugh / Budby SF	Ref: 36
	Pendleton, T.A. and Pendleton, D.T. 2010	Birklands West / Sherwood Heath	Ref: 36
	<i>Picromerus bidens</i>	Pendleton, T.A. and Pendleton, D.T. 2008	Birklands and Bilhaugh / Budby SF
Pendleton, T.A. and Pendleton, D.T. 2009		Birklands and Bilhaugh / Budby SF	Ref: 36
Pendleton, T.A. and Pendleton, D.T. 2010		Birklands and Bilhaugh / Budby SF	Ref: 119
Pendleton, T.A. and Pendleton, D.T. 2010		Birklands and Bilhaugh	Ref: 36
Pendleton, T.A. and Pendleton, D.T. 2010		Birklands West / Clipstone Old Qtr	Ref: 36
<i>Piezodorus lituratus</i> Gorse Shieldbug	Ryles, W.E.	Birklands and Bilhaugh	Ref: 1
	Godfrey, A. 2004	Birklands West / Sherwood Heath	Ref: 105
	Pendleton, T.A. and Pendleton, D.T. 2007	Birklands and Bilhaugh / Budby SF	Ref: 36
	Pendleton, T.A. and Pendleton, D.T. 2008	Birklands and Bilhaugh / Budby SF	Ref: 36
	Pendleton, T.A. and Pendleton, D.T. 2009	Birklands and Bilhaugh / Budby SF	Ref: 36
Pendleton, T.A. and Pendleton, D.T. 2010	Birklands and Bilhaugh / Budby SF	Ref: 119	

<i>Rhacognathus punctatus</i>	Pendleton, T.A. and Pendleton, D.T. 2009	Birklands and Bilhaugh / Budby SF	Ref: 36
Heather Bug	Pendleton, T.A. and Pendleton, D.T. 2010	Birklands and Bilhaugh / Budby SF	Ref: 119
<i>Sciocoris cursitans</i>	Godfrey, A. 2006	Birklands West / Sherwood Heath	Ref: 108
<i>Troilus luridus</i>	Pendleton, T.A. and Pendleton, D.T. 2007	Birklands West / Clipstone Old Qtr	Ref: 36
	Pendleton, T.A. and Pendleton, D.T. 2009	Birklands and Bilhaugh / Budby SF	Ref: 36
	Pendleton, T.A. and Pendleton, D.T. 2010	Birklands and Bilhaugh	Ref: 36
	Pendleton, T.A. and Pendleton, D.T. 2010	Birklands and Bilhaugh / Budby SF	Ref: 36
<i>Zicrona caerulea</i>	Godfrey, A. 2006	Birklands West / Sherwood Heath	Ref: 108
Blue Shieldbug	Pendleton, T.A. and Pendleton, D.T. 2009	Birklands West / Clipstone Old Qtr	Ref: 36
	Pendleton, T.A. and Pendleton, D.T. 2010	Birklands and Bilhaugh	Ref: 36
	Pendleton, T.A. and Pendleton, D.T. 2010	Birklands and Bilhaugh	Ref: 36
	Pendleton, T.A. and Pendleton, D.T. 2010	Birklands West / Clipstone Old Qtr	Ref: 36

Acanthosomatidae

<i>Acanthosoma haemorrhoidale</i>	Pendleton, T.A. and Pendleton, D.T. 2007	Birklands and Bilhaugh / Budby SF	Ref: 36
Hawthorn Shieldbug	Pendleton, T.A. and Pendleton, D.T. 2008	Birklands and Bilhaugh	Ref: 36
	Pendleton, T.A. and Pendleton, D.T. 2009	Birklands and Bilhaugh	Ref: 36
	Pendleton, T.A. and Pendleton, D.T. 2009	Birklands West / Clipstone Old Qtr	Ref: 36
	Pendleton, T.A. and Pendleton, D.T. 2010	Birklands and Bilhaugh	Ref: 36
	Pendleton, T.A. and Pendleton, D.T. 2010	Birklands and Bilhaugh / Budby SF	Ref: 36
<i>Elasmostethus Interstinctus</i>	Ryles, W.E.	Birklands and Bilhaugh	Ref: 1
Birch Shieldbug	Budworth, D. et al 2009	Birklands and Bilhaugh	Ref: 120
	Pendleton, T.A. and Pendleton, D.T. 2008	Birklands and Bilhaugh	Ref: 36
	Pendleton, T.A. and Pendleton, D.T. 2008	Birklands West / Clipstone Old Qtr	Ref: 36
	Pendleton, T.A. and Pendleton, D.T. 2009	Birklands and Bilhaugh	Ref: 36
	Pendleton, T.A. and Pendleton, D.T. 2009	Birklands West / Clipstone Old Qtr	Ref: 36
	Pendleton, T.A. and Pendleton, D.T. 2009	Birklands and Bilhaugh / Budby SF	Ref: 36
	Pendleton, T.A. and Pendleton, D.T. 2009	Birklands West / Sherwood Heath	Ref: 36
	Pendleton, T.A. and Pendleton, D.T. 2010	Birklands and Bilhaugh	Ref: 36
	Pendleton, T.A. and Pendleton, D.T. 2010	Birklands West / Clipstone Old Qtr	Ref: 36
	Pendleton, T.A. and Pendleton, D.T. 2010	Birklands and Bilhaugh / Budby SF	Ref: 119
<i>Elasmucha grisea</i>	Ryles, W.E.	Birklands and Bilhaugh	Ref: 1
Parent Bug	Pendleton, T.A. and Pendleton, D.T. 2009	Birklands West / Clipstone Old Qtr	Ref: 36
	Pendleton, T.A. and Pendleton, D.T. 2009	Birklands and Bilhaugh / Budby SF	Ref: 36

Homoptera Cicadas, Froghoppers, Treehoppers, Planthoppers and Leafhoppers

Cercopidae

<i>Aphrophora alni</i>	Pendleton, T.A. and Pendleton, D.T. 2009 Pendleton, T.A. and Pendleton, D.T. 2010	Birklands West and Ollerton Corner Birklands West / Clipstone Old Qtr Birklands West / Clipstone Old Qtr	Ref: 1 Ref: 36 Ref: 36
<i>Cercopis vulnerata</i>	1912 Pendleton, T.A. and Pendleton, D.T. 2005 Pendleton, T.A. and Pendleton, D.T. 2006 Pendleton, T.A. and Pendleton, D.T. 2007 Pendleton, T.A. and Pendleton, D.T. 2007 Pendleton, T.A. and Pendleton, D.T. 2008 Pendleton, T.A. and Pendleton, D.T. 2008 Pendleton, T.A. and Pendleton, D.T. 2009 Pendleton, T.A. and Pendleton, D.T. 2009 Pendleton, T.A. and Pendleton, D.T. 2009 Pendleton, T.A. and Pendleton, D.T. 2010 Pendleton, T.A. and Pendleton, D.T. 2010 Pendleton, T.A. and Pendleton, D.T. 2010	Birklands and Bilhaugh Birklands West / Clipstone Old Qtr Birklands West / Clipstone Old Qtr Birklands West / Clipstone Old Qtr Birklands and Bilhaugh Birklands and Bilhaugh Birklands West / Clipstone Old Qtr Birklands and Bilhaugh Birklands West / Clipstone Old Qtr Birklands and Bilhaugh / Budby SF Birklands and Bilhaugh Birklands West / Clipstone Old Qtr Birklands and Bilhaugh / Budby SF	Ref: 1 Ref: 36 Ref: 36 Ref: 36 Ref: 36 Ref: 36 Ref: 36 Ref: 36 Ref: 36 Ref: 36 Ref: 36 Ref: 36 Ref: 36 Ref: 119
<i>Neophilaenus exclamationis</i>	Godfrey, A. 2004 Pendleton, T.A. and Pendleton, D.T. 2010	Birklands and Bilhaugh Birklands West / Sherwood Heath Birklands and Bilhaugh / Budby SF	Ref: 1 Ref: 105 Ref: 119
<i>Neophilaenus lineatus</i>	Godfrey, A. 2004 Pendleton, T.A. and Pendleton, D.T. 2010	Birklands West / Sherwood Heath Birklands and Bilhaugh / Budby SF	Ref: 105 Ref: 119
<i>Philaenus spumarius</i> Common Froghopper	Godfrey, A. 2004 Pendleton, T.A. and Pendleton, D.T. 2008 Pendleton, T.A. and Pendleton, D.T. 2008 Pendleton, T.A. and Pendleton, D.T. 2008 Pendleton, T.A. and Pendleton, D.T. 2009 Pendleton, T.A. and Pendleton, D.T. 2009 Pendleton, T.A. and Pendleton, D.T. 2009 Pendleton, T.A. and Pendleton, D.T. 2009 Pendleton, T.A. and Pendleton, D.T. 2010 Pendleton, T.A. and Pendleton, D.T. 2010 Pendleton, T.A. and Pendleton, D.T. 2010	Birklands and Bilhaugh Birklands West / Sherwood Heath Birklands West / Clipstone Old Qtr Birklands and Bilhaugh Birklands and Bilhaugh / Budby SF Birklands and Bilhaugh Birklands West / Clipstone Old Qtr Birklands West / Sherwood Heath Birklands and Bilhaugh / Budby SF Birklands and Bilhaugh Birklands West / Clipstone Old Qtr Birklands and Bilhaugh / Budby SF	Ref: 1 Ref: 105 Ref: 36 Ref: 36 Ref: 36 Ref: 36 Ref: 36 Ref: 36 Ref: 36 Ref: 36 Ref: 36 Ref: 119

Membracidae

<i>Centrotus cornutus</i>	1912	Birklands and Bilhaugh	Ref: 1
---------------------------	------	------------------------	--------

Cicadellidae

<i>Adarrus ocellaris</i>		Birklands West and Ollerton Corner	Ref: 1
<i>Agallia consobrina</i>		Birklands and Bilhaugh	Ref: 1
<i>Alebra albostriella</i>	1911	Birklands and Bilhaugh	Ref: 1
	1912	Birklands and Bilhaugh	Ref: 1
<i>Allygus mixtus</i>	1912	Birklands West and Ollerton Corner	Ref: 1
<i>Allygus modestus</i>	Pendleton, T.A. and Pendleton, D.T. 2008	Birklands West / Clipstone Old Qtr	Ref: 36
<i>Aphrodes albifrons</i>	1912	Birklands and Bilhaugh	Ref: 1
	1912	Birklands West and Ollerton Corner	Ref: 1
	1913	Birklands and Bilhaugh	Ref: 1
	1913	Birklands West and Ollerton Corner	Ref: 1
	1914	Birklands and Bilhaugh	Ref: 1
	1914	Birklands West and Ollerton Corner	Ref: 1
<i>Aphrodes bifasciatus</i>	Carr, L.A. 1912	Birklands West and Ollerton Corner	Ref: 1
<i>Aphrodes flavostriatus</i>	1912	Birklands West and Ollerton Corner	Ref: 1
<i>Aphrodes histrionicus</i>	Carr, L.A. 1912	Birklands West and Ollerton Corner	Ref: 1
<i>Arocephalus punctum</i>	1911	Birklands West and Ollerton Corner	Ref: 1
	1912	Birklands and Bilhaugh	Ref: 1
	1913	Birklands and Bilhaugh	Ref: 1
	1914	Birklands and Bilhaugh	Ref: 1
	Godfrey, A. 2004	Birklands West / Sherwood Heath	Ref: 105
<i>Arthaldeus pascuellus</i>	Godfrey, A. 2004	Birklands West / Sherwood Heath	Ref: 105
<i>Cicadella viridis</i>	Pendleton, T.A. and Pendleton, D.T. 2009	Birklands and Bilhaugh / Budby SF	Ref: 36
	Pendleton, T.A. and Pendleton, D.T. 2010	Birklands and Bilhaugh / Budby SF	Ref: 119
<i>Cicadula aurantipes</i>	Godfrey, A. 2004	Birklands West / Sherwood Heath	Ref: 105
<i>Cicadula persimilis</i>	Godfrey, A. 2004	Birklands West / Sherwood Heath	Ref: 105
<i>Cicadula quadrinotata</i>		Birklands West and Ollerton Corner	Ref: 1
		Birklands and Bilhaugh	Ref: 1

<i>Deltocephalus pulicaris</i>		Birklands and Bilhaugh	Ref: 1
<i>Dikraneura variata</i>	1912	Birklands and Bilhaugh	Ref: 1
	1913	Birklands and Bilhaugh	Ref: 1
	Godfrey, A. 2004	Birklands West / Sherwood Heath	Ref: 105
<i>Edwardsiana rosae</i>		Birklands and Bilhaugh	Ref: 1
		Birklands West and Ollerton Corner	Ref: 1
<i>Elymana sulphurella</i>		Birklands West and Ollerton Corner	Ref: 1
		Birklands and Bilhaugh	Ref: 1
<i>Empoasca vitis</i>	Godfrey, A. 2004	Birklands West / Sherwood Heath	Ref: 105
<i>Eupteryx aurata</i>		Birklands and Bilhaugh	Ref: 1
Potato Leafhopper			
<i>Eupteryx stachydearum</i>		Birklands and Bilhaugh	Ref: 1
<i>Eupteryx urticae</i>		Birklands and Bilhaugh	Ref: 1
<i>Eurhadina concinna</i>		Birklands and Bilhaugh	Ref: 1
<i>Eurhadina pulchella</i>		Birklands and Bilhaugh	Ref: 1
<i>Euscelis incisus</i>	1914	Birklands and Bilhaugh	Ref: 1
	Pendleton, T.A. and Pendleton, D.T. 2010	Birklands and Bilhaugh / Budby SF	Ref: 119
<i>Evacanthus acuminatus</i>	1912	Birklands West and Ollerton Corner	Ref: 1
<i>Fagocyba carri</i>	Carr, J.W. 1912	Birklands and Bilhaugh	Ref: 1
<i>Hardya melanopsis</i>	1913	Birklands and Bilhaugh	Ref: 1
	Godfrey, A. 2004	Birklands West / Sherwood Heath	Ref: 105
<i>Jassargus distinguendus</i>	Godfrey, A. 2004	Birklands West / Sherwood Heath	Ref: 105
<i>Kybos betulicola</i>	Pendleton, T.A. and Pendleton, D.T. 2010	Birklands and Bilhaugh	Ref: 36
<i>Kybos smaragdula</i>		Birklands and Bilhaugh	Ref: 1
		Birklands West and Ollerton Corner	Ref: 1
<i>lassus lanio</i>	Alexander, K.N.A. 2009/2010	Birklands and Bilhaugh	Ref: 117
	Pendleton, T.A. and Pendleton, D.T. 2010	Birklands and Bilhaugh	Ref: 36

	Pendleton, T.A. and Pendleton, D.T. 2010	Birklands and Bilhaugh / Budby SF	Ref: 119
<i>Ledra aurita</i>	1912	Birklands and Bilhaugh	Ref: 1
	Pendleton, T.A. and Pendleton, D.T. 2010	Birklands and Bilhaugh	Ref: 36
<i>Macropsis scotti</i>	Carr, L.A. 1912	Birklands West and Ollerton Corner	Ref: 1
<i>Macropsis scutellata</i>	1912	Birklands West and Ollerton Corner	Ref: 1
<i>Macrosteles sexnotatus</i>	Godfrey, A. 2004	Birklands West / Sherwood Heath	Ref: 105
<i>Megophthalmus scabripennis</i>	1912	Birklands West and Ollerton Corner	Ref: 1
	1914	Birklands West and Ollerton Corner	Ref: 1
<i>Megophthalmus scanicus</i>		Birklands West and Ollerton Corner	Ref: 1
<i>Mocydia crocea</i>	Godfrey, A. 2004	Birklands West / Sherwood Heath	Ref: 105
<i>Mocydiopsis attenuata</i>	Pendleton, T.A. and Pendleton, D.T. 2010	Birklands and Bilhaugh / Budby SF	Ref: 119
<i>Oncopsis alni</i>	1911	Birklands and Bilhaugh	Ref: 1
<i>Oncopsis flavicollis</i>	1901	Birklands and Bilhaugh	Ref: 1
	1914	Birklands and Bilhaugh	Ref: 1
<i>Oncopsis tristis</i>	1911	Birklands and Bilhaugh	Ref: 1
	1912	Birklands and Bilhaugh	Ref: 1
	1913	Birklands and Bilhaugh	Ref: 1
<i>Recilia coronifera</i>	Carr, J.W. 1914	Birklands and Bilhaugh	Ref: 1
<i>Rhytistylus proceps</i>	1913	Birklands and Bilhaugh	Ref: 1
	Godfrey, A. 2004	Birklands West / Sherwood Heath	Ref: 105
<i>Speudotettix subfuscus</i>	1911	Birklands and Bilhaugh	Ref: 1
	1913	Birklands and Bilhaugh	Ref: 1
<i>Streptanus marginatus</i>	1914	Birklands and Bilhaugh	Ref: 1
<i>Streptanus sordidus</i>	1912	Birklands West and Ollerton Corner	Ref: 1
	Godfrey, A. 2004	Birklands West / Sherwood Heath	Ref: 105
<i>Thamnotettix confinis</i>	Carr, J.W. 1914	Birklands and Bilhaugh	Ref: 1
<i>Typhlocyba quercus</i>		Birklands and Bilhaugh	Ref: 1

<i>Ulopa reticulata</i>	1912	Birklands and Bilhaugh	Ref: 1
	1912	Birklands West and Ollerton Corner	Ref: 1
	1914	Birklands West and Ollerton Corner	Ref: 1
	1914	Birklands and Bilhaugh	Ref: 1
	Godfrey, A. 2003	Birklands West / Sherwood Heath	Ref: 104
	Godfrey, A. 2004	Birklands West / Sherwood Heath	Ref: 105
	Pendleton, T.A. and Pendleton, D.T. 2010	Birklands and Bilhaugh / Budby SF	Ref: 119
<i>Zygina angusta</i>	Carr, J.W. 1915	Birklands West and Ollerton Corner	Ref: 10
<i>Zygina schneideri</i>	Godfrey, A. 2004	Birklands West / Sherwood Heath	Ref: 105
<i>Zygina scutellaris</i>	Godfrey, A. 2004	Birklands West / Sherwood Heath	Ref: 105

Cixiidae

<i>Cixius nervosus</i>		Birklands and Bilhaugh	Ref: 1
	Pendleton, T.A. and Pendleton, D.T. 2009	Birklands and Bilhaugh	Ref: 36
<i>Tachycixius pilosus</i>	1912	Birklands and Bilhaugh	Ref: 1

Delphacidae

<i>Conomelus anceps</i>	Pendleton, T.A. and Pendleton, D.T. 2010	Birklands and Bilhaugh / Budby SF	Ref: 119
<i>Dicranotropis hamata</i>	1912	Birklands and Bilhaugh	Ref: 1
	1912	Birklands West and Ollerton Corner	Ref: 1
<i>Ditropis pteridis</i>	Pendleton, T.A. and Pendleton, D.T. 2010	Birklands and Bilhaugh / Budby SF	Ref: 119
<i>Javesella discolor</i>		Birklands West and Ollerton Corner	Ref: 1
<i>Javesella pellucida</i>		Birklands and Bilhaugh	Ref: 1
<i>Muellerianella fairmairei</i>	1914	Birklands West and Ollerton Corner	Ref: 1
<i>Stenocranus minutus</i>	1912	Birklands and Bilhaugh	Ref: 1
	Godfrey, A. 2004	Birklands West / Sherwood Heath	Ref: 105

Homoptera Jumping Plant Lice (Psyllids)

Arytaina genistae

Broom Psyllid

Birklands and Bilhaugh

Ref: 10

Cacopsylla melanoneura

1914

Birklands and Bilhaugh

Ref: 10

Cacopsylla peregrina

Birklands and Bilhaugh

Ref: 1

Cacopsylla visci

1912

Birklands and Bilhaugh

Ref: 1

Chamaepsylla hartigii

1911

Birklands and Bilhaugh

Ref: 1

4.0 Hemiptera not recorded at Sherwood Forest NNR since the late 1800's - early 1900's

85 species

Saldidae

<i>Chartoscirta cocksii</i>	Carr, L.A. 1914	Birklands West and Ollerton Corner	Ref: 1
<i>Macrosaldula scotica</i>	Carr, L.A. 1914	Birklands West and Ollerton Corner	Ref: 1
<i>Saldula orthochila</i>	1914	Birklands West and Ollerton Corner	Ref: 1

Tingidae

<i>Derephysia foliacea</i>	1914	Birklands West and Ollerton Corner	Ref: 1
----------------------------	------	------------------------------------	--------

Microphysidae

<i>Myrmedobia distinguenda</i>	Bedwell, E.C. 1913	Birklands and Bilhaugh	Ref: 10
--------------------------------	--------------------	------------------------	---------

Miridae

<i>Bryocoris pteridis</i>	1912	Birklands West and Ollerton Corner	Ref: 1
<i>Camptozygum aequale</i>	1914	Birklands and Bilhaugh	Ref: 1
<i>Campyloneuea virgula</i>	1912	Birklands West and Ollerton Corner	Ref: 1
<i>Closterotomus fulvomaculatus</i>	1912	Birklands West and Ollerton Corner	Ref: 1
<i>Dicyphus globulifer</i>	Robinson. 1915	Birklands and Bilhaugh	Ref: 10
<i>Dicyphus stachydis</i>		Birklands and Bilhaugh	Ref: 1
<i>Grypocoris stysi</i>		Birklands West and Ollerton Corner	Ref: 1
<i>Leptopterna ferrugata</i>	1912	Birklands West and Ollerton Corner	Ref: 1
<i>Lygocoris pabulinus</i>		Birklands and Bilhaugh	Ref: 1
<i>Mecomma ambulans</i>		Birklands West and Ollerton Corner	Ref: 1
<i>Monalocoris filicis</i>		Birklands and Bilhaugh	Ref: 1
<i>Neolygus contaminatus</i>	1914	Birklands West and Ollerton Corner	Ref: 1
<i>Orthonotus rufifrons</i>	1914	Birklands West and Ollerton Corner	Ref: 1
<i>Orthops campestris</i>	1912	Birklands and Bilhaugh	Ref: 1
<i>Orthotylus viridinervis</i>	Carr, L.A. 1912	Birklands West and Ollerton Corner	Ref: 1
<i>Phylus palliceps</i>	1911	Birklands and Bilhaugh	Ref: 1
<i>Phytocoris longipennis</i>	1912	Birklands and Bilhaugh	Ref: 1
<i>Phytocoris pini</i>	1914	Birklands and Bilhaugh	Ref: 1
<i>Phytocoris ulmi</i>		Birklands and Bilhaugh	Ref: 1
<i>Pinalitus rubricatus</i>	1912	Birklands West and Ollerton Corner	Ref: 1
<i>Psallus ambiguus</i>	Carr, L.A. 1914	Birklands West and Ollerton Corner	Ref: 1
<i>Psallus fallenii</i>	1914	Birklands and Bilhaugh	Ref: 1
<i>Psallus variabilis</i>	1914	Birklands West and Ollerton Corner	Ref: 1
<i>Psallus varians</i>	1912	Birklands West and Ollerton Corner	Ref: 1
<i>Stenotus binotatus</i>	1912	Birklands West and Ollerton Corner	Ref: 1

<i>Trigonotylus ruficornis</i>	1914	Birklands and Bilhaugh	Ref: 1
Anthocoridae			
<i>Acompocoris pygmaeus</i>	1914	Birklands and Bilhaugh	Ref: 1
<i>Anthocoris confusus</i>		Birklands and Bilhaugh	Ref: 1
<i>Orius laevigatus</i>		Birklands and Bilhaugh	Ref: 1
<i>Xylocoris cursitans</i>	Jones. 1924	Birklands and Bilhaugh	Ref: 10
Cimicidae			
<i>Cimex columbarius</i>	Willoughby Ellis, H.	Birklands and Bilhaugh	Ref: 1
<i>Lyctocoris canpestris</i>	1914	Birklands West and Ollerton Corner	Ref: 1
Lygaeidae			
<i>Scolopostethus thomsoni</i>	1912	Birklands and Bilhaugh	Ref: 1
<i>Stygnocoris rusticus</i>	1912	Birklands and Bilhaugh	Ref: 1
<i>Stygnocoris sabulosus</i>	1913	Birklands and Bilhaugh	Ref: 1
<i>Trapezonotus arenarius</i>	1918	Birklands West and Ollerton Corner	Ref: 10
Alydidae			
<i>Alydus calcaratus</i>		Birklands and Bilhaugh	Ref: 1
Membracidae			
<i>Centrotus cornutus</i>	1912	Birklands and Bilhaugh	Ref: 1
Cicadellidae			
<i>Adarrus ocellaris</i>		Birklands West and Ollerton Corner	Ref: 1
<i>Agallia consobrina</i>		Birklands and Bilhaugh	Ref: 1
<i>Alebra albostriella</i>	1912	Birklands and Bilhaugh	Ref: 1
<i>Allygus mixtus</i>	1912	Birklands West and Ollerton Corner	Ref: 1
<i>Aphrodes albifrons</i>	1914	Birklands West and Ollerton Corner	Ref: 1
<i>Aphrodes bifasciatus</i>	Carr, L.A. 1912	Birklands West and Ollerton Corner	Ref: 1
<i>Aphrodes flavostriatus</i>	1912	Birklands West and Ollerton Corner	Ref: 1
<i>Aphrodes histrionicus</i>	Carr, L.A. 1912	Birklands West and Ollerton Corner	Ref: 1
<i>Cicadula quadrinotata</i>		Birklands and Bilhaugh	Ref: 1
<i>Deltocephalus pulicaris</i>		Birklands and Bilhaugh	Ref: 1
<i>Elymana sulphurella</i>		Birklands and Bilhaugh	Ref: 1
<i>Eurhadina concinna</i>		Birklands and Bilhaugh	Ref: 1
<i>Eurhadina pulchella</i>		Birklands and Bilhaugh	Ref: 1

<i>Eupteryx aurata</i>		Birklands and Bilhaugh	Ref: 1
<i>Eupteryx stachydearum</i>		Birklands and Bilhaugh	Ref: 1
<i>Eupteryx urticae</i>		Birklands and Bilhaugh	Ref: 1
<i>Evacanthus acuminatus</i>	1912	Birklands West and Ollerton Corner	Ref: 1
<i>Fagocyba carri</i>	Carr, J.W. 1912	Birklands and Bilhaugh	Ref: 1
<i>Kybos smaragdula</i>		Birklands West and Ollerton Corner	Ref: 1
<i>Macropsis scotti</i>	Carr, L.A. 1912	Birklands West and Ollerton Corner	Ref: 1
<i>Macropsis scutellata</i>	1912	Birklands West and Ollerton Corner	Ref: 1
<i>Megophthalmus scabripennis</i>	1914	Birklands West and Ollerton Corner	Ref: 1
<i>Megophthalmus scanicus</i>		Birklands West and Ollerton Corner	Ref: 1
<i>Oncopsis alni</i>	1911	Birklands and Bilhaugh	Ref: 1
<i>Oncopsis flavicollis</i>	1914	Birklands and Bilhaugh	Ref: 1
<i>Oncopsis tristis</i>	1913	Birklands and Bilhaugh	Ref: 1
<i>Recilia coronifera</i>	Carr, J.W. 1914	Birklands and Bilhaugh	Ref: 1
<i>Speudotettix subfuscus</i>	1913	Birklands and Bilhaugh	Ref: 1
<i>Streptanus marginatus</i>	1914	Birklands and Bilhaugh	Ref: 1
<i>Thamnotettix confinis</i>	Carr, J.W. 1914	Birklands and Bilhaugh	Ref: 1
<i>Typhlocyba quercus</i>		Birklands and Bilhaugh	Ref: 1
<i>Zygina angusta</i>	Carr, J.W. 1915	Birklands West and Ollerton Corner	Ref: 10

Cixiidae

<i>Tachycixius pilosus</i>	1912	Birklands and Bilhaugh	Ref: 1
----------------------------	------	------------------------	--------

Delphacidae

<i>Dicranotropis hamata</i>	1912	Birklands West and Ollerton Corner	Ref: 1
<i>Javesella discolor</i>		Birklands West and Ollerton Corner	Ref: 1
<i>Javesella pellucida</i>		Birklands and Bilhaugh	Ref: 1
<i>Muellerianella fairmairei</i>	1914	Birklands West and Ollerton Corner	Ref: 1

Psyllids

<i>Arytaina genistae</i>		Birklands and Bilhaugh	Ref: 10
<i>Cacopsylla melanoneura</i>	1914	Birklands and Bilhaugh	Ref: 10
<i>Cacopsylla peregrina</i>		Birklands and Bilhaugh	Ref: 1
<i>Cacopsylla visci</i>	1912	Birklands and Bilhaugh	Ref: 1
<i>Chamaepsylla hartigii</i>	1911	Birklands and Bilhaugh	Ref: 1

5.0 New Hemiptera recorded at Sherwood Forest NNR since 2000

80 species

Nepidae

<i>Ranatra linearis</i>	Merritt, R. 2000	Birklands and Bilhaugh / Budby SF	Ref: 96
-------------------------	------------------	-----------------------------------	---------

Corixidae

<i>Cymatia coleoprata</i>	Merritt, R. 2003	Birklands and Bilhaugh / Budby SF	Ref: 96
<i>Callicorixa praeusta</i>	Merritt, R. 2000	Birklands and Bilhaugh / Budby SF	Ref: 96
<i>Corixa punctata</i>	Merritt, R. 2000	Birklands and Bilhaugh / Budby SF	Ref: 96
<i>Hesperocorixa linnei</i>	Merritt, R. 2000	Birklands and Bilhaugh / Budby SF	Ref: 96
<i>Hesperocorixa sahlbergi</i>	Merritt, R. 1999	Birklands and Bilhaugh / Budby SF	Ref: 96
<i>Sigara distincta</i>	Merritt, R. 2000	Birklands and Bilhaugh / Budby SF	Ref: 96
<i>Sigara dorsalis</i>	Merritt, R. 2000	Birklands and Bilhaugh / Budby SF	Ref: 96
<i>Sigara falleni</i>	Merritt, R. 2000	Birklands and Bilhaugh / Budby SF	Ref: 96
<i>Sigara fossarum</i>	Merritt, R. 2000	Birklands and Bilhaugh / Budby SF	Ref: 96
<i>Sigara lateralis</i>	Merritt, R. 2003	Birklands and Bilhaugh / Budby SF	Ref: 96
<i>Sigara limitata</i>	Merritt, R. 2003	Birklands and Bilhaugh / Budby SF	Ref: 96

Naucoridae

<i>Ilyocoris cimicoides</i>	Merritt, R. 2000	Birklands and Bilhaugh / Budby SF	Ref: 96
-----------------------------	------------------	-----------------------------------	---------

Notonectidae

<i>Notonecta viridis</i>	Merritt, R. 2000	Birklands and Bilhaugh / Budby SF	Ref: 96
--------------------------	------------------	-----------------------------------	---------

Veliidae

<i>Microvelia reticulata</i>	Merritt, R. 2003	Birklands and Bilhaugh / Budby SF	Ref: 96
<i>Velia caprai</i>	Merritt, R. 2000	Birklands and Bilhaugh / Budby SF	Ref: 96

Gerridae

<i>Gerris odontogaster</i>	Merritt, R. 2003	Birklands and Bilhaugh / Budby SF	Ref: 96
----------------------------	------------------	-----------------------------------	---------

Tingidae

<i>Acalypta parvula</i>	Godfrey, A. 2006	Birklands West / Sherwood Heath	Ref: 108
<i>Agramma laetum</i>	Godfrey, A. 2006	Birklands West / Sherwood Heath	Ref: 108

Miridae

<i>Alloeotomus gothicus</i>	Pendleton, T.A. and Pendleton, D.T. 2009	Birklands and Bilhaugh / Budby SF	Ref: 36
<i>Calocoris alpestris</i>	Pendleton, T.A. and Pendleton, D.T. 2010	Birklands and Bilhaugh	Ref: 36
<i>Calocoris roseomaculatus</i>	Godfrey, A. 2006	Birklands West / Sherwood Heath	Ref: 108
<i>Charagochilus gyllenhalii</i>	Godfrey, A. 2006	Birklands West / Sherwood Heath	Ref: 108
<i>Closterotomus norwegicus</i>	Pendleton, T.A. and Pendleton, D.T. 2009	Birklands and Bilhaugh	Ref: 36
<i>Deraeocoris lutescens</i>	Alexander, K.N.A. 2009/2010	Birklands West and Ollereton Corner	Ref: 118
<i>Deraeocoris ruber</i>	Pendleton, T.A. and Pendleton, D.T. 2008	Birklands and Bilhaugh	Ref: 36
<i>Lygus pratensis</i>	Godfrey, A. 2006	Birklands West / Sherwood Heath	Ref: 108
<i>Notostria elongata</i>	Pendleton, T.A. and Pendleton, D.T. 2010	Birklands and Bilhaugh / Budby SF	Ref: 36
<i>Pseudoloxops coccineus</i>	Godfrey, A. 2006	Birklands West / Sherwood Heath	Ref: 108
<i>Rhabdormiris striatellus</i>	Pendleton, T.A. and Pendleton, D.T. 2010	Birklands and Bilhaugh	Ref: 36
<i>Stenodema calcarata</i>	Godfrey, A. 2004	Birklands West / Sherwood Heath	Ref: 105
<i>Stenodema laevigata</i>	Godfrey, A. 2006	Birklands West / Sherwood Heath	Ref: 108

Nabidae

<i>Himacerus apterus</i>	Godfrey, A. 2006	Birklands West / Sherwood Heath	Ref: 108
<i>Himacerus boops</i>	Godfrey, A. 2006	Birklands West / Sherwood Heath	Ref: 108
<i>Himacerus mirmicoides</i>	Pendleton, T.A. and Pendleton, D.T. 2009	Birklands and Bilhaugh / Budby SF	Ref: 36
<i>Nabis flavomarginatus</i>	Godfrey, A. 2006	Birklands West / Sherwood Heath	Ref: 108
<i>Nabis rugosus</i>	Godfrey, A. 2006	Birklands West / Sherwood Heath	Ref: 108

Anthocoridae

<i>Anthocoris nemorum</i>	Alexander, K.N.A. 2009/2010	Birklands West and Ollereton Corner	Ref: 118
---------------------------	-----------------------------	-------------------------------------	----------

Reduviidae

<i>Empicoris vagabundus</i>	Alexander, K.N.A. 2009/2010	Birklands and Bilhaugh	Ref: 117
-----------------------------	-----------------------------	------------------------	----------

Aradidae

<i>Aradus depressus</i>	Pendleton, T.A. and Pendleton, D.T. 2009	Birklands and Bilhaugh	Ref: 36
-------------------------	--	------------------------	---------

Berytidae

<i>Metatropis rufescens</i>	Alexander, K.N.A. 2009/2010	Birklands and Bilhaugh	Ref: 118
-----------------------------	-----------------------------	------------------------	----------

Lygaeidae

<i>Gastrodes grossipes</i>	Pendleton, T.A. and Pendleton, D.T. 2009	Birklands and Bilhaugh / Budby SF	Ref: 36
<i>Ischnodemus sabuleti</i>	Godfrey, A. 2006	Birklands West / Sherwood Heath	Ref: 108

<i>Kleidocerys resedae</i>	Godfrey, A. 2003	Birklands West / Sherwood Heath	Ref: 104
<i>Kleidocerys ericae</i>	Godfrey, A. 2006	Birklands West / Sherwood Heath	Ref: 108
<i>Peritrechus geniculatus</i>	Godfrey, A. 2004	Birklands West / Sherwood Heath	Ref: 105
<i>Trapezonotus desertus</i>	Pendleton, T.A. and Pendleton, D.T. 2010	Birklands and Bilhaugh	Ref: 36
Rhopalidae			
<i>Chorosoma schillingi</i>	Budworth, D. 2004	Birklands and Bilhaugh / Budby SF	Ref: 96
<i>Rhopalus subrufous</i>	Godfrey, A. 2006	Birklands West / Sherwood Heath	Ref: 108
<i>Stictopleurus punctatonervosus</i>	Pendleton, T.A. and Pendleton, D.T. 2010	Birklands and Bilhaugh / Budby SF	Ref: 36
Cydnidae			
<i>Legnotus limbosus</i>	Pendleton, T.A. and Pendleton, D.T. 2009	Birklands and Bilhaugh	Ref: 36
Thyreocoridae			
<i>Thyreocoris scarabaeoides</i>	Pendleton, T.A. and Pendleton, D.T. 2010	Birklands and Bilhaugh	Ref: 36
Pentatomidae			
<i>Aelia acuminata</i>	Budworth, D. 2004	Birklands and Bilhaugh / Budby SF	Ref: 96
<i>Dolycoris baccarum</i>	Godfrey, A. 2006	Birklands West / Sherwood Heath	Ref: 108
<i>Eysarcoris venustissimus</i>	Pendleton, T.A. and Pendleton, D.T. 2008	Birklands West / Clipstone Old Qtr	Ref: 36
<i>Neottiglossa pusilla</i>	Budworth, D. 2004	Birklands and Bilhaugh / Budby SF	Ref: 96
<i>Picromerus bidens</i>	Pendleton, T.A. and Pendleton, D.T. 2008	Birklands and Bilhaugh / Budby SF	Ref: 36
<i>Rhacognathus punctatus</i>	Pendleton, T.A. and Pendleton, D.T. 2009	Birklands and Bilhaugh / Budby SF	Ref: 36
<i>Sciocoris cursitans</i>	Godfrey, A. 2006	Birklands West / Sherwood Heath	Ref: 108
<i>Troilus luridus</i>	Pendleton, T.A. and Pendleton, D.T. 2007	Birklands West / Clipstone Old Qtr	Ref: 36
<i>Zicrona caerulea</i>	Godfrey, A. 2006	Birklands West / Sherwood Heath	Ref: 108
Acanthosomatidae			
<i>Acanthosoma haemorrhoidale</i>	Pendleton, T.A. and Pendleton, D.T. 2007	Birklands and Bilhaugh / Budby SF	Ref: 36
<i>Elasmostethus interstinctus</i>	Budworth, D. et al 2009	Birklands and Bilhaugh	Ref: 120
Cercopidae			
<i>Neophilaenus lineatus</i>	Godfrey, A. 2004	Birklands West / Sherwood Heath	Ref: 105
Cicadellidae			
<i>Allygus modestus</i>	Pendleton, T.A. and Pendleton, D.T. 2008	Birklands West / Clipstone Old Qtr	Ref: 36

<i>Arthaldeus pascuellus</i>	Godfrey, A. 2004	Birklands West / Sherwood Heath	Ref: 105
<i>Cicadella viridis</i>	Pendleton, T.A. and Pendleton, D.T. 2009	Birklands and Bilhaugh / Budby SF	Ref: 36
<i>Cicadula aurantipes</i>	Godfrey, A. 2004	Birklands West / Sherwood Heath	Ref: 105
<i>Cicadula persimilis</i>	Godfrey, A. 2004	Birklands West / Sherwood Heath	Ref: 105
<i>Empoasca vitis</i>	Godfrey, A. 2004	Birklands West / Sherwood Heath	Ref: 105
<i>Jassargus distinguendus</i>	Godfrey, A. 2004	Birklands West / Sherwood Heath	Ref: 105
<i>Kybos betulicola</i>	Pendleton, T.A. and Pendleton, D.T. 2010	Birklands and Bilhaugh	Ref: 36
<i>Lassus lanio</i>	Alexander, K.N.A. 2009/2010	Birklands and Bilhaugh	Ref: 117
<i>Macrosteles sexnotatus</i>	Godfrey, A. 2004	Birklands West / Sherwood Heath	Ref: 105
<i>Mocydia crocea</i>	Godfrey, A. 2004	Birklands West / Sherwood Heath	Ref: 105
<i>Mocydiopsis attenuata</i>	Pendleton, T.A. and Pendleton, D.T. 2010	Birklands and Bilhaugh / Budby SF	Ref: 119
<i>Zygina schneideri</i>	Godfrey, A. 2004	Birklands West / Sherwood Heath	Ref: 105
<i>Zygina scutellaris</i>	Godfrey, A. 2004	Birklands West / Sherwood Heath	Ref: 105
Delphacidae			
<i>Conomelus anceps</i>	Pendleton, T.A. and Pendleton, D.T. 2010	Birklands and Bilhaugh / Budby SF	Ref: 119
<i>Ditropis pteridis</i>	Pendleton, T.A. and Pendleton, D.T. 2010	Birklands and Bilhaugh / Budby SF	Ref: 119

6.0 Red Listed and Nationally Notable Hemiptera recorded at Sherwood Forest NNR 1800's - 2010

		National status	First record	Last record	Notes
Saldidae	<i>Chartoscirta cocksii</i>	Uncommon	1914	1914	
Tingidae	<i>Agramma laetum</i>	Local	2006	2006	
Microphysidae	<i>Myrmedobia distinguenda</i>	Local	1913	1913	
Miridae	<i>Lygus pratensis</i>	RDB3	2006	2006	
	<i>Pasllus variabilis</i>	Local	1911	1914	
Nabidae	<i>Himacerus boops</i>	Local	2006	2006	
Cimicidae	<i>Cimex columbarius</i>	RDB3			
Aradidae	<i>Aradus depressus</i>	Local	2009	2009	
Lygaeidae	<i>Stygnocoris rusticus</i>	Local	1912	1912	
Alydidae	<i>Alydus calcaratus</i>	Local			
Rhopalidae	<i>Chorosoma schillingi</i>	Local	2004	2010	
	<i>Rhopalus subrufous</i>	Local	2006	2010	
	<i>Stictopleurus punctatonervosus</i>	Vag / Acc	2010	2010	
Thyreocoridae	<i>Thyreocoris scarabaeoides</i>	Local	2010	2010	
Pentatomidae	<i>Aelia acuminata</i>	Local	2004	2010	
	<i>Neottiglossa pusilla</i>	Local	2004	2010	
	<i>Rhacognathus punctatus</i>	Local	2009	2010	
	<i>Sciocoris cursitans</i>	Nationally notable: B.	2006	2006	
	<i>Zicrona caerulea</i>	Local	2006	2010	
Membracidae	<i>Centrotus cornutus</i>	Local	1912	1912	
Cicadellidae	<i>Fagocyba carri</i>	Local	1912	1912	
	<i>Hardya melanopsis</i>	Local	1913	2004	
	<i>lassus lanio</i>				
	<i>Ledra aurita</i>	Local	1912	2010	
	<i>Zygina schneideri</i>	Local	2004	2004	