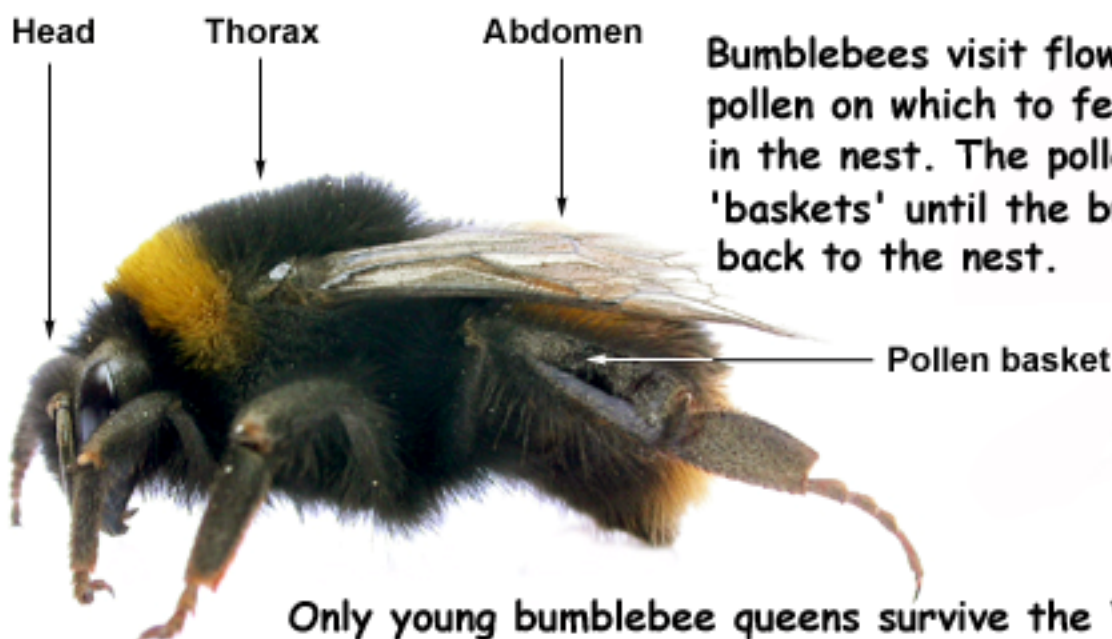
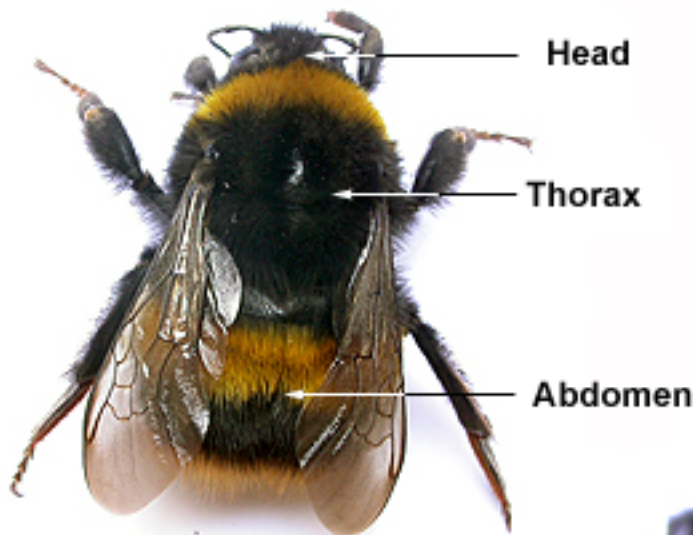


Looking at insects **Bumblebees**

Bumblebees are closely related to wasps, yet they look very different. They have the same three sections of the body that wasps have, which includes the head, thorax and the abdomen.

Bumblebees can give you a painful sting if they feel threatened or their nest is disturbed. They live together in colonies, but these are usually much smaller than those formed by wasps.

The Bumblebee's body is much wider and more hairy than wasps. Most are coloured black or brown, with bands of yellow on the thorax and abdomen.



Bumblebees visit flowers to collect pollen on which to feed their brood in the nest. The pollen is stored in 'baskets' until the bumblebee goes back to the nest.

Only young bumblebee queens survive the Winter months, hibernating somewhere safe until March or April, when she can start her own colony.