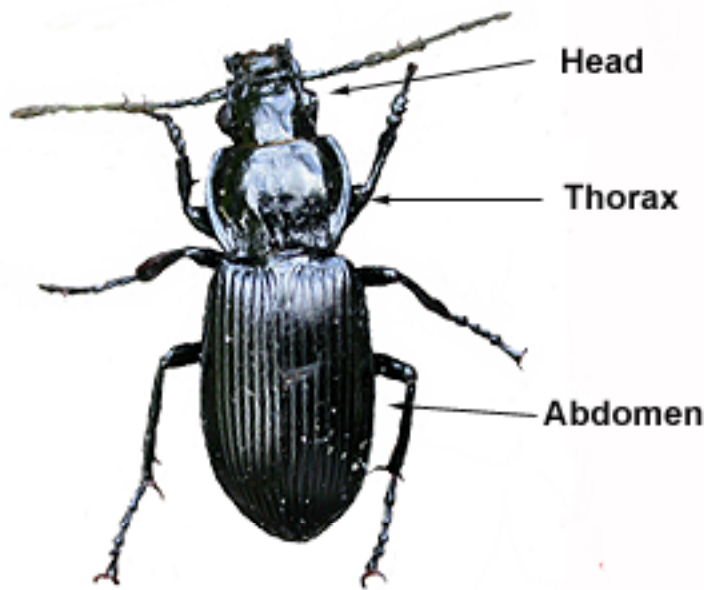


Looking at insects **Beetles**

The bodies of all insects are divided into three sections. These are the head, thorax and abdomen. All insects have six legs, which are fixed to the underside of the body.

Insects do not have bones in the same way that makes up our skeleton, but their soft bodies are protected from the outside by a hard covering. This is called an exo-skeleton. Beetles have the hardest exo-skeleton of all our insects.

Beetle antennae are attached to the front of the head and with their eyes on the side.



Many beetles can fly and their wings are folded up and protected by the wing cases which cover the soft abdomen. The abdomen of most insects is divided into 10 or 11 segments, but in most beetles, these cannot be seen from above.

Three types of antennae

