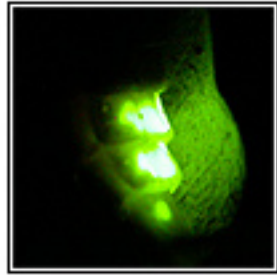


# Insect Fact Sheet

## The Glow Worm

The Glow Worm is a true wonder of nature and once used to be a common insect across the whole of the country. The Glow Worm is actually a beetle but only the male can fly. The male does look much more like a beetle than the female does and is much more active. Glow Worms are nocturnal beetles and are only active at night. Both male and female do not feed and live entirely on food eaten as a larva. The Glow Worm larva eats slugs and small snails.



Eggs laid by the female hatch in about three weeks and the larva can take between one and two years to grow large enough to pupate and change into an adult. Because the female Glow Worm cannot fly, she has to attract a male. Glow Worms do this by being able to create their own green, glowing light. This light is easily seen by the male Glow Worm, who has very large eyes that see well in the dark.



Once the female has attracted a male, she switches off her light and begins to lay her eggs, hiding them in leaves and the soil.

Once all her eggs have been laid, she dies shortly afterwards.

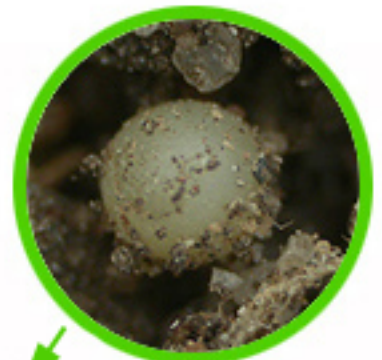
Female Glow Worms only live for two or three weeks and the males probably slightly less than that. With a body length of about 25 millimetres, Glow Worms are small, but the light from a female, can be seen from over 20 metres away.

You will have to be lucky to see a Glow Worm, but there are special Glow Worm walks you can go on, to see these magical little beetles. But you will have to go with a grown up.

Glow Worms can be found from late May and sometimes into August. They like grassy areas woodland rides, old railway lines and open fields. Sometimes they can even be found in gardens, so it is always worth a look.

### Life cycle stages

Egg



Larva



Pupa



Adult

