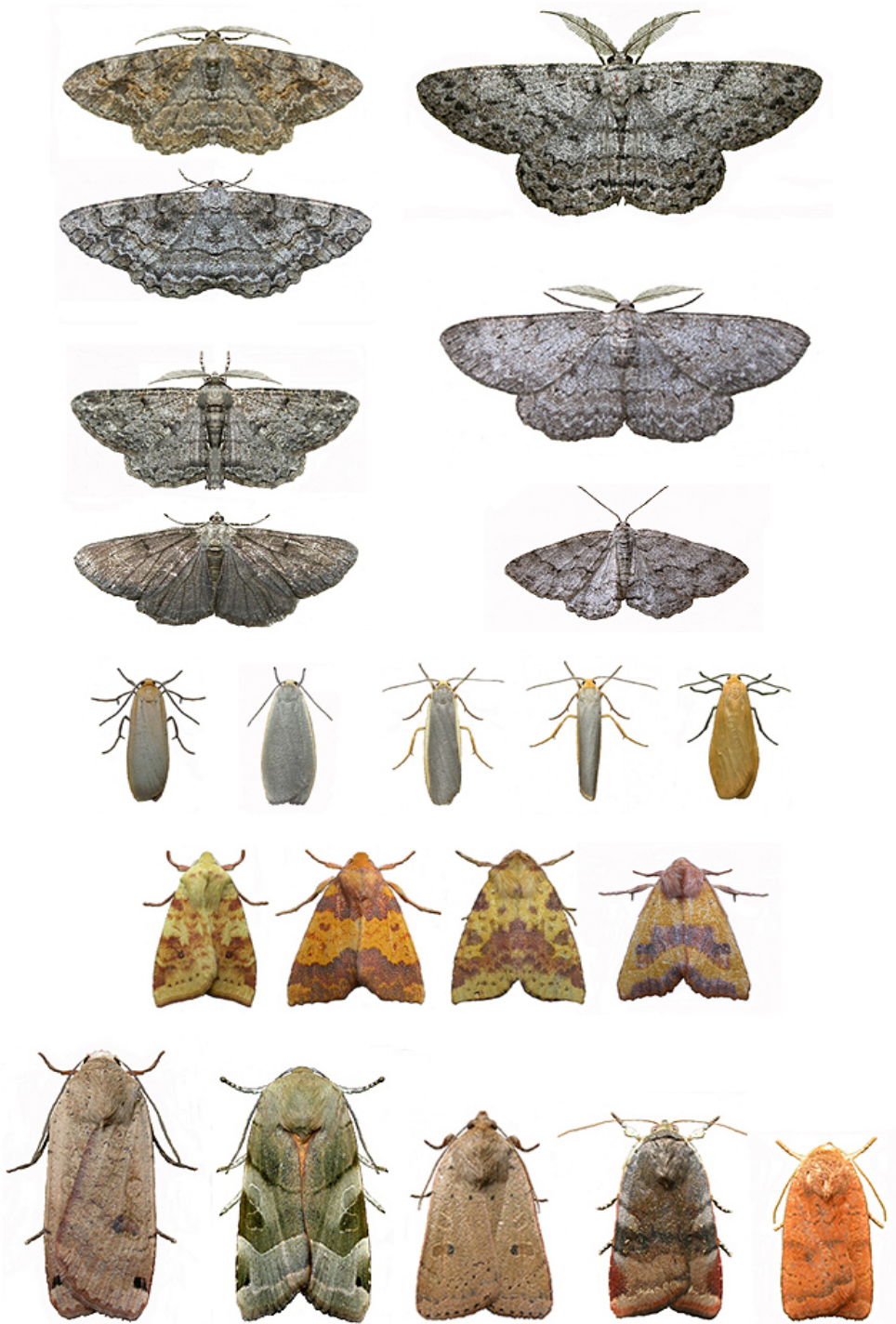


# Nottinghamshire Moth List

Micropterigidae - Nolidae      Version 8.1/June 2020



## Introduction to the Nottinghamshire Moth List - Version 8.1/June 2020

Welcome to the latest version of the Nottinghamshire Moth List, aiming to produce a workable list of all moths recorded within the county. The original species list compiled for Version 1.0, came about after we continued to receive numerous requests from those recording moths in the county, to collate a standard Nottinghamshire species list of both macro and micro moths and to produce any list in an electronic format felt required by today's recorders.

This updated version of the Nottinghamshire Moth List, replaces the previous versions published on [www.eakingbirds.com](http://www.eakingbirds.com). It contains an up to date (June 2020) list of all the macro moths recorded in Nottinghamshire (VC56) although we await news on the verification of four species. The list of micro moths still remains unverified and in our personal view the micro moth list (despite the probability of it containing some dubious records) is believed to be largely accurate and in any case, is still the only list we have to work with and will still provide the basis for any further lists published at a later time.

This list differs considerably from all our other previously published lists, as it now includes moths recorded from two gardens at Broadholme, on the Nottinghamshire border with Lincolnshire. Now known to be located within VC56, it was felt appropriate to include some 31 species not previously known from Nottinghamshire, into this list and *Depressaria ultimella*, which Martin recorded new to his Broadholme garden and (we think) to Nottinghamshire in May 2019. Our thanks therefore goes to Martin Gray, the South Lincolnshire micromoth recorder, for sharing his records with us.

Among the terrific list of species Martin recorded from both his gardens, are several rare migrant moths that will be new to Nottinghamshire. Both Ni Moth and White-point were both very much overdue in the county, as was the Pyralid *Antigastra catalaunalis*. But another rare migrant Pyralid *Loxostege sticticalis*, was perhaps even less expected. Martin also recorded a number of leafmining species, but Jerry Clough appears to have found Nottinghamshire's first record of *Ectoedemia heringella*, on Holm Oak at Clifton Grove in early 2018 and *Stigmella suberivora* has recently been found at Colwick.

### List order and numbering system

This species list again incorporates the new scientific species names, numbering system and order of species, as used in the **Checklist of the Lepidoptera of the British Isles (D. Agassiz, S. Beavan, R. Heckford. 2013)**. The old Bradley and Fletcher numbers are still provided, as these may continue to be used by both county recorders for some years yet, so should still be provided whenever recorders send in their records.

### Recent additions to the list

4.057	85	<i>Stigmella suberivora</i>		(Stainton, 1869)
19.011	473	<i>Acrolepiopsis assectella</i>	<b>Leek Moth</b>	(Zeller, 1839)
32.040	671	<i>Depressaria ultimella</i>		Stainton, 1849
62.021	1441	<i>Oncocera semirubella</i>		(Scopoli, 1763)
73.082	2292	<i>Cryphia algae</i>	<b>Tree-lichen Beauty</b>	(Fabricius, 1775)
74.002	2076	<i>Meganola albula</i>	<b>Kent Black Arches</b>	([Denis & Schiffermüller], 1775)

## Changes to families and family order in the Agassiz, Beavan & Heckford list

### Agassiz, Beavan & Heckford

*Micropterigidae*  
*Eriocraniidae*  
*Hepialidae*  
*Nepticulidae*  
*Opostegidae*  
*Heliozelidae*  
*Adelidae*  
*Incurvariidae*  
*Prodoxidae*  
*Tischeriidae*  
*Psychidae*  
*Tineidae*  
*Roeslerstammiidae*  
*Bucculatricidae*  
*Gracillariidae*  
*Yponomeutidae*  
*Ypsolophidae*  
*Plutellidae*  
*Glyphipterigidae*  
*Argyresthiidae*  
*Lyonetiidae*  
*Praydidae*  
*Heliodinidae*  
*Bedelliidae*  
*Scythropiidae*  
*Douglasiidae*  
*Autostichidae*  
*Oecophoridae*  
*Chimabachidae*  
*Lypusidae*  
*Paleopodidae*  
*Depressariidae*  
*Ethmiidae*  
*Cosmopterigidae*  
*Gelechiidae*  
*Batrachedridae*  
*Coleophoridae*  
*Elachistidae*  
*Parametriotidae*  
*Momphidae*  
*Blastobasidae*  
*Stathmopodidae*  
*Scythrididae*  
*Alucitidae*  
*Pterophoridae*  
*Schreckensteiniidae*  
*Epermeniidae*  
*Choreutidae*  
*Tortricidae*  
*Cossidae*  
*Castniidae*  
*Sesiidae*  
*Limacodidae*  
*Zygaenidae*  
*Pyralidae*  
*Crambidae*  
*Drepanidae*  
*Lasiocampidae*  
*Endromidae*  
*Saturniidae*  
*Sphingidae*  
*Geometridae*  
*Notodontidae*  
*Erebidae*  
*Noctuidae*  
*Nolidae*

### Bradley & Fletcher

*Micropterigidae*  
*Eriocraniidae*  
*Hepialidae*  
*Nepticulidae*  
*Opostegidae*  
*Tischeriidae*  
*Incurvariidae*  
*Prodoxidae*  
*Adelidae*  
*Heliozelidae*  
*Cossidae*  
*Zygaenidae*  
*Limacodidae*  
*Psychidae*  
*Tineidae*  
*Bucculatricidae*  
*Roeslerstammiidae*  
*Gracillariidae*  
*Sesiidae*  
*Choreutidae*  
*Glyphipterigidae*  
*Heliodinidae*  
*Yponomeutidae*  
*Lyonetiidae*  
*Coleophoridae*  
*Elachistidae*  
*Oecophoridae*  
*Ethmiidae*  
*Gelechiidae*  
*Autostichidae*  
*Blastobasidae*  
*Batrachedridae*  
*Momphidae*  
*Cosmopterigidae*  
*Scythrididae*  
*Tortricidae*  
*Epermeniidae*  
*Schreckensteiniidae*  
*Alucitidae*  
*Crambidae*  
*Pyralidae*  
*Pterophoridae*  
*Lasiocampidae*  
*Saturniidae*  
*Endromidae*  
*Drepanidae*  
*Thyatiridae*  
*Geometridae*  
*Sphingidae*  
*Notodontidae*  
*Thaumetopoeidae*  
*Lymantriidae*  
*Arctidae*  
*Ctenuchidae*  
*Nolidae*  
*Noctuidae*

ABH No	B&F No	Taxon	Vernacular	Author
<b>Micropterigidae</b>				
1.001	1	<i>Micropterix tunbergiella</i>		(Fabricius, 1787)
1.002	2	<i>Micropterix mansuetella</i>		(Zeller, 1844)
1.003	3	<i>Micropterix aureatella</i>		(Scopoli, 1763)
1.004	4	<i>Micropterix aruncella</i>		(Scopoli, 1763)
1.005	5	<i>Micropterix calthella</i>		(Linnaeus, 1761)
<b>Eriocraniidae</b>				
2.001	6	<i>Dyseriocrania subpurpurella</i>		(Haworth, 1828)
2.003	8	<i>Eriocrania unimaculella</i>		(Zetterstedt, 1839)
2.004	9	<i>Eriocrania sparrmannella</i>		(Bosc, 1791)
2.005	10	<i>Eriocrania salopiella</i>		(Stainton, 1854)
2.006	11	<i>Eriocrania cicatricella</i>		(Zetterstedt, 1839)
2.007	13	<i>Eriocrania semipurpurella</i>		(Stephens, 1835)
2.008	12	<i>Eriocrania sangii</i>		(Wood, 1891)
<b>Hepialidae</b>				
3.001	15	<i>Triodia sylvina</i>	<b>Orange Swift</b>	(Linnaeus, 1761)
3.002	17	<i>Korscheltellus lupulina</i>	<b>Common Swift</b>	(Linnaeus, 1758)
3.003	18	<i>Korscheltellus fusconebulosa</i>	<b>Map-winged Swift</b>	(De Geer, 1778)
3.004	16	<i>Phymatopus hecta</i>	<b>Gold Swift</b>	(Linnaeus, 1758)
3.005	14	<i>Hepialus humuli</i>	<b>Ghost Moth</b>	(Linnaeus, 1758)
<b>Nepticulidae</b>				
Nepticulinae				
4.001	118	<i>Enteucha acetosae</i>		(Stainton, 1854)
4.002	116	<i>Stigmella lapponica</i>		(Wocke, 1862)
4.003	117	<i>Stigmella confusella</i>		(Wood, 1894)
4.004	90	<i>Stigmella tiliae</i>		(Frey, 1856)
4.005	110	<i>Stigmella betulicola</i>		(Stainton, 1856)
4.007	112	<i>Stigmella luteella</i>		(Stainton, 1857)
4.008	114	<i>Stigmella glutinosae</i>		(Stainton, 1858)
4.009	115	<i>Stigmella alnetella</i>		(Stainton, 1856)
4.010	111	<i>Stigmella microtheriella</i>		(Stainton, 1854)
4.013	97	<i>Stigmella malella</i>		(Stainton, 1854)
4.014	98	<i>Stigmella catharticella</i>		(Stainton, 1853)
4.015	92	<i>Stigmella anomalella</i>		(Goeze, 1783)
4.017	93	<i>Stigmella centifoliella</i>		(Zeller, 1848)
4.018	80	<i>Stigmella ulmivora</i>		(Fologne, 1860)
4.019	95	<i>Stigmella viscerella</i>		(Stainton, 1853)
4.020	82	<i>Stigmella paradoxa</i>		(Frey, 1858)
4.022	107	<i>Stigmella regiella</i>		(Herrich-Schäffer, 1855)
4.023	108	<i>Stigmella crataegella</i>		(Klimesch, 1936)
4.024	104	<i>Stigmella magdalenae</i>		(Klimesch, 1950)
4.025	103	<i>Stigmella nylandriella</i>		(Tengström, 1848)
4.026	100	<i>Stigmella oxyacanthella</i>		(Stainton, 1854)
4.030	99	<i>Stigmella hybnerella</i>		(Hübner, 1796)
4.032	75	<i>Stigmella floslactella</i>		(Haworth, 1828)
4.034	77	<i>Stigmella tityrella</i>		(Stainton, 1854)
4.035	68	<i>Stigmella salicis</i>		(Stainton, 1854)
4.038	70	<i>Stigmella obliquella</i>		(Heinemann, 1862)
4.039	73	<i>Stigmella trimaculella</i>		(Haworth, 1828)
4.040	74	<i>Stigmella assimilella</i>		(Zeller, 1848)
4.042	67	<i>Stigmella plagiolella</i>		(Stainton, 1854)
4.043	63	<i>Stigmella lemniscella</i>		(Zeller, 1839)
4.044	64	<i>Stigmella continuella</i>		(Stainton, 1856)
4.045	50	<i>Stigmella aurella</i>		(Fabricius, 1775)
4.047	53	<i>Stigmella splendidissimella</i>		(Herrich-Schäffer, 1855)
4.053	78	<i>Stigmella incognitella</i>		(Herrich-Schäffer, 1855)
4.054	79	<i>Stigmella perpygmaeella</i>		(Doubleday, 1859)
4.055	81	<i>Stigmella hemargyrella</i>		(Kollar, 1832)
4.056	65	<i>Stigmella speciosa</i>		(Frey, 1858)
4.057	85	<i>Stigmella suberivora</i>		(Stainton, 1869)
4.058	89	<i>Stigmella basiguttella</i>		(Heinemann, 1862)
4.059	87	<i>Stigmella svenssoni</i>		(Johansson, 1971)
4.060	84	<i>Stigmella ruficapitella</i>		(Haworth, 1828)
4.061	83	<i>Stigmella atricapitella</i>		(Haworth, 1828)
4.062	88	<i>Stigmella samiatella</i>		(Zeller, 1839)
4.063	86	<i>Stigmella roborella</i>		(Johansson, 1971)
4.068	46	<i>Trifurcula immundella</i>		(Zeller, 1839)

4.071	40	<i>Bohemannia pulverosella</i>	(Stainton, 1849)
4.072	19	<i>Bohemannia quadrimaculella</i>	(Boheman, [1853])
4.074	21	<i>Ectoedemia sericopeza</i>	(Zeller, 1839)
4.075	22	<i>Ectoedemia louisella</i>	(Sircom, 1849)
4.076	20	<i>Ectoedemia decentella</i>	(Herrich-Schäffer, 1855)
4.078	42	<i>Ectoedemia septembrella</i>	(Stainton, 1849)
4.085	23	<i>Ectoedemia argyropeza</i>	(Zeller, 1839)
4.088	36a	<i>Ectoedemia heringella</i>	(Mariani, 1939)
4.089	37	<i>Ectoedemia albifasciella</i>	(Heinemann, 1871)
4.090	38	<i>Ectoedemia subbimaculella</i>	(Haworth, 1828)
4.091	39	<i>Ectoedemia heringi</i>	(Toll, 1934)
4.094	28	<i>Ectoedemia angulifasciella</i>	(Stainton, 1849)
4.095	29	<i>Ectoedemia atricollis</i>	(Stainton, 1857)
4.096	30	<i>Ectoedemia arcuatella</i>	(Herrich-Schäffer, 1855)
4.097	31	<i>Ectoedemia rubivora</i>	(Wocke, 1860)
4.099	34	<i>Ectoedemia occultella</i>	(Linnaeus, 1767)
4.100	35	<i>Ectoedemia minimella</i>	(Zetterstedt, 1839)
<b>Opostegidae</b>			
Oposteginae			
5.001	119	<i>Opostega salaciella</i>	(Treitschke, 1833)
<b>Heliozelidae</b>			
6.003	154	<i>Heliozela sericiella</i>	(Haworth, 1828)
6.004	156	<i>Heliozela resplendella</i>	(Stainton, 1851)
6.005	157	<i>Heliozela hamoniella</i>	(Sorhagen, 1885)
<b>Adelidae</b>			
Adelinae			
7.001	148	<i>Nemophora degeerella</i>	(Linnaeus, 1758)
7.003	146	<i>Nemophora cupriacella</i>	(Hübner, [1819])
7.004	144	<i>Nemophora fasciella</i>	(Fabricius, 1775)
7.006	150	<i>Adela reaumurella</i>	(Linnaeus, 1758)
7.007	149	<i>Adela cuprella</i>	([Denis & Schiffermüller], 1775)
7.008	151	<i>Adela croesella</i>	(Scopoli, 1763)
7.009	153	<i>Adela fibulella</i>	([Denis & Schiffermüller], 1775)
7.010	152	<i>Cauchas rufimitrella</i>	(Scopoli, 1763)
Nematopogoninae			
7.012	141	<i>Nematopogon schwarziellus</i>	(Zeller, 1839)
7.014	143	<i>Nematopogon metaxella</i>	(Hübner, [1813])
7.015	140	<i>Nematopogon swammerdamella</i>	(Linnaeus, 1758)
<b>Incurvariidae</b>			
Incurvariinae			
8.001	129	<i>Incurvaria pectinea</i>	(Haworth, 1828)
8.002	130	<i>Incurvaria masculella</i>	([Denis & Schiffermüller], 1775)
8.003	131	<i>Incurvaria oehlmanniella</i>	(Hübner, 1796)
8.004	132	<i>Incurvaria praelatella</i>	([Denis & Schiffermüller], 1775)
8.005	128	<i>Phylloporia bistrigella</i>	(Haworth, 1828)
<b>Prodoxidae</b>			
Lamproniinae			
9.001	133	<i>Lampronia capitella</i>	(Clerck, 1759)
9.002	135	<i>Lampronia luzella</i>	(Hübner, [1817])
9.003	136	<i>Lampronia corticella</i>	(Linnaeus, 1758)
9.004	137	<i>Lampronia morosa</i>	(Zeller, 1852)
9.006	138	<i>Lampronia fuscataella</i>	(Tengström, 1848)
		<b>Current Shoot Borer</b>	
		<b>Raspberry Moth</b>	
<b>Tischeriidae</b>			
10.001	123	<i>Tischeria ekebladella</i>	(Bjerkander, 1795)
10.003	125	<i>Coptotriche marginea</i>	(Haworth, 1828)
10.006	127	<i>Coptotriche angusticollella</i>	(Duponchel, [1843])
<b>Psychidae</b>			
Naryciinae			
11.001	180	<i>Diplodoma laichartingella</i>	(Goeze, 1783)
11.002	175	<i>Narycia duplicella</i>	(Goeze, 1783)

11.003	176	<i>Dahlica triquetrella</i>		(Hübner, [1813])
11.004	177	<i>Dahlica inconspicuellata</i>	<b>Lesser Lichen Case-bearer</b>	(Stainton, 1849)
11.005	179	<i>Dahlica lichenella</i>	<b>Lichen Case-bearer</b>	(Linnaeus, 1761)
<b>Taleporiinae</b>				
11.006	181	<i>Taleporia tubulosa</i>		(Retzius, 1783)
<b>Psychinae</b>				
11.009	184	<i>Luffia ferchaultella</i>		(Stephens, 1850)
11.012	186	<i>Psyche casta</i>		(Pallas, 1767)
<b>Tineidae</b>				
<b>Scardiinae</b>				
12.010	196	<i>Morphaga choragella</i>		([Denis & Schiffermüller], 1775)
<b>Nemapogoninae</b>				
12.011	225	<i>Triaxomera fulvimitrella</i>		(Hübner, 1796)
12.012	224	<i>Triaxomera parasitella</i>		(Hübner, 1796)
12.014	223	<i>Nemaxera betulinella</i>		(Paykull, 1785)
12.015	215	<i>Nemapogon granella</i>	<b>Corn Moth</b>	(Linnaeus, 1758)
12.016	216	<i>Nemapogon cloacella</i>	<b>Cork Moth</b>	(Haworth, 1828)
12.020	218	<i>Nemapogon variatella</i>		(Clemens, 1859)
12.021	220	<i>Nemapogon clematella</i>		(Fabricius, 1781)
<b>Tineinae</b>				
12.025	234	<i>Trichophaga tapetzella</i>	<b>Tapestry Moth</b>	(Linnaeus, 1758)
12.026	236	<i>Tineola bisselliella</i>	<b>Common Clothes Moth</b>	(Hummel, 1823)
12.027	240	<i>Tinea pellionella</i>	<b>Case-bearing Clothes Moth</b>	(Linnaeus, 1758)
12.030	245	<i>Tinea pallescentella</i>	<b>Large Pale Clothes Moth</b>	(Stainton, 1851)
12.032	246	<i>Tinea semifulvella</i>		(Haworth, 1828)
12.033	247	<i>Tinea trinotella</i>		(Thunberg, 1794)
12.034	237	<i>Niditinea fuscella</i>	<b>Brown-dotted Clothes Moth</b>	(Linnaeus, 1758)
12.035	238	<i>Niditinea striolella</i>		(Matsumura, 1931)
12.036	227	<i>Monopis laevigella</i>		([Denis & Schiffermüller], 1775)
12.037	228	<i>Monopis weaverella</i>		(Scott, 1858)
12.038	229	<i>Monopis obviella</i>		([Denis & Schiffermüller], 1775)
12.042	233	<i>Monopis fenestratella</i>		(Heyden, 1863)
<b>Teichobiinae</b>				
12.047	199	<i>Psychoides verhuella</i>		(Bruand, 1853)
12.048	200	<i>Psychoides filicivora</i>		(Meyrick, 1937)
<b>Roeslerstammiidae</b>				
13.001	446	<i>Roeslerstammia pronubella</i>		([Denis & Schiffermüller], 1775)
13.002	447	<i>Roeslerstammia erxlebella</i>		(Fabricius, 1787)
<b>Bucculatricidae</b>				
14.001	265	<i>Bucculatrix cristatella</i>		(Zeller, 1839)
14.002	266	<i>Bucculatrix nigricomella</i>		(Zeller, 1839)
14.006	270	<i>Bucculatrix frangutella</i>		(Goeze, 1783)
14.009	273	<i>Bucculatrix thoracella</i>		(Thunberg, 1794)
14.010	274	<i>Bucculatrix ulmella</i>		(Zeller, 1848)
14.012	275	<i>Bucculatrix bechsteinella</i>		(Bechstein & Scharfenberg, 1805)
14.013	276	<i>Bucculatrix demaryella</i>		(Duponchel, 1840)
<b>Gracillariidae</b>				
<b>Gracillariinae</b>				
15.003	281	<i>Caloptilia populetorum</i>		(Zeller, 1839)
15.004	282	<i>Caloptilia elongella</i>		(Linnaeus, 1761)
15.005	283	<i>Caloptilia betulicola</i>		(Hering, 1928)
15.006	284	<i>Caloptilia rufipennella</i>		(Hübner, 1796)
15.008	286	<i>Caloptilia alchimiella</i>		(Scopoli, 1763)
15.009	287	<i>Caloptilia robustella</i>		(Jäckh, 1972)
15.010	288	<i>Caloptilia stigmatella</i>		(Fabricius, 1781)
15.014	293	<i>Gracilaria syringella</i>		(Fabricius, 1794)
15.015	294	<i>Aspilapteryx tringipennella</i>		(Zeller, 1839)
15.016	297	<i>Euspilapteryx auroguttella</i>		(Stephens, 1835)
15.017	296	<i>Calybites phasianipennella</i>		(Hübner, [1813])
15.019	313	<i>Acrocercops brongniardella</i>		(Fabricius, 1798)
15.021	314	<i>Leucospilapteryx omisella</i>		(Stainton, 1848)
15.022	310	<i>Callisto denticulella</i>		(Thunberg, 1794)

15.025	301	<i>Parornix betulae</i>		(Stainton, 1854)
15.028	303	<i>Parornix anglicella</i>		(Stainton, 1850)
15.029	304	<i>Parornix devoniella</i>		(Stainton, 1850)
15.030	305	<i>Parornix scoticella</i>		(Stainton, 1850)
15.032	308	<i>Parornix finitimella</i>		(Zeller, 1850)
15.033	309	<i>Parornix torquillella</i>		(Zeller, 1850)
<b>Lithocolletinae</b>				
15.034	315	<i>Phyllonorycter harrisella</i>		(Linnaeus, 1761)
15.035	316	<i>Phyllonorycter roboris</i>		(Zeller, 1839)
15.036	317	<i>Phyllonorycter heegeriella</i>		(Zeller, 1846)
15.037	318	<i>Phyllonorycter tenerella</i>		(Joannis, 1915)
15.039	320	<i>Phyllonorycter quercifoliella</i>		(Zeller, 1839)
15.040	321	<i>Phyllonorycter messaniella</i>		(Zeller, 1846)
15.041	321a	<i>Phyllonorycter platani</i>		(Staudinger, 1870)
15.043	323	<i>Phyllonorycter oxyacanthae</i>		(Frey, 1856)
15.044	324	<i>Phyllonorycter sorbi</i>		(Frey, 1855)
15.045	325	<i>Phyllonorycter mespilella</i>		(Hübner, [1805])
15.046	326	<i>Phyllonorycter blancardella</i>		(Fabricius, 1781)
15.049	329	<i>Phyllonorycter spinicolella</i>		(Zeller, 1846)
15.050	330	<i>Phyllonorycter cerasicolella</i>		(Herrich-Schäffer, 1855)
15.051	331	<i>Phyllonorycter lantanellella</i>		(Schrank, 1802)
15.052	332	<i>Phyllonorycter corylifoliella</i>		(Hübner, 1796)
15.053	332a	<i>Phyllonorycter leucographella</i>	<b>Firethorn Leaf Miner</b>	(Zeller, 1850)
15.054	333	<i>Phyllonorycter viminella</i>		(Sircom, 1848)
15.056	335	<i>Phyllonorycter salicicolella</i>		(Sircom, 1848)
15.059	338	<i>Phyllonorycter cavella</i>		(Zeller, 1846)
15.060	339	<i>Phyllonorycter ulicicolella</i>		(Stainton, 1851)
15.063	341	<i>Phyllonorycter maestingella</i>		(Müller, 1764)
15.064	342	<i>Phyllonorycter coryli</i>	<b>Nut Leaf Blister Moth</b>	(Nicelli, 1851)
15.065	343	<i>Phyllonorycter esperella</i>		(Goeze, 1783)
15.066	344	<i>Phyllonorycter strigulatella</i>		(Lienig & Zeller, 1846)
15.067	345	<i>Phyllonorycter rajella</i>		(Linnaeus, 1758)
15.073	351	<i>Phyllonorycter lautella</i>		(Zeller, 1846)
15.074	352	<i>Phyllonorycter schreberella</i>		(Fabricius, 1781)
15.075	353	<i>Phyllonorycter ulmifoliella</i>		(Hübner, [1817])
15.076	354	<i>Phyllonorycter emberizaepenella</i>		(Bouché, 1834)
15.078	356	<i>Phyllonorycter tristrigella</i>		(Haworth, 1828)
15.079	357	<i>Phyllonorycter stettinensis</i>		(Nicelli, 1852)
15.080	358	<i>Phyllonorycter froelichiella</i>		(Zeller, 1839)
15.081	359	<i>Phyllonorycter nicellii</i>		(Stainton, 1851)
15.082	360	<i>Phyllonorycter klemannella</i>		(Fabricius, 1781)
15.083	361	<i>Phyllonorycter trifasciella</i>		(Haworth, 1828)
15.084	362	<i>Phyllonorycter acerifoliella</i>		(Zeller, 1839)
15.085	363	<i>Phyllonorycter joannisii</i>		(Le Marchand, 1936)
15.086	364	<i>Phyllonorycter geniculella</i>		(Ragonot, 1874)
15.089	366a	<i>Cameraria ohridella</i>	<b>Horse Chestnut Leaf Miner</b>	(Deschka & Dimi?, 1986)
<b>Phyllocnistinae</b>				
15.092	368	<i>Phyllocnistis unipunctella</i>		(Stephens, 1834)
<b>Yponomeutidae</b>				
<b>Yponomeutinae</b>				
16.001	424	<i>Yponomeuta evonymella</i>	<b>Bird Cherry Ermine</b>	(Linnaeus, 1758)
16.002	425	<i>Yponomeuta padella</i>	<b>Orchard Ermine</b>	(Linnaeus, 1758)
16.003	426	<i>Yponomeuta malinellus</i>	<b>Apple Ermine</b>	(Zeller, 1838)
16.004	427	<i>Yponomeuta cagnagella</i>	<b>Spindle Ermine</b>	(Hübner, [1813])
16.005	428	<i>Yponomeuta rorrella</i>	<b>Willow Ermine</b>	(Hübner, 1796)
16.007	430	<i>Yponomeuta plumbella</i>		([Denis & Schiffermüller], 1775)
16.010	435	<i>Zelleria hepariella</i>		(Stainton, 1849)
16.014	436	<i>Pseudoswammerdamia combinella</i>		(Hübner, 1786)
16.015	437	<i>Swammerdamia caesiella</i>		(Hübner, 1796)
16.017	438	<i>Swammerdamia pyrella</i>		(Villers, 1789)
16.019	440	<i>Paraswammerdamia albicapitella</i>		(Scharfenberg, 1805)
16.020	441	<i>Paraswammerdamia nebulella</i>		(Goeze, 1783)
16.021	442	<i>Cedestis gysselella</i>		(Zeller, 1839)
16.022	443	<i>Cedestis subfasciella</i>		(Stephens, 1834)
16.023	444	<i>Ocnerostoma piniariella</i>		(Zeller, 1847)
16.024	445	<i>Ocnerostoma friesei</i>		(Svensson, 1966)
<b>Ypsolophidae</b>				
<b>Ypsolophinae</b>				
17.001	451	<i>Ypsolopha mucronella</i>		(Scopoli, 1763)

17.002	452	<i>Ypsolopha nemorella</i>		(Linnaeus, 1758)
17.003	453	<i>Ypsolopha dentella</i>	<b>Honeysuckle Moth</b>	(Fabricius, 1775)
17.005	455	<i>Ypsolopha scabrella</i>		(Linnaeus, 1761)
17.006	456	<i>Ypsolopha horridella</i>		(Treitschke, 1835)
17.007	457	<i>Ypsolopha lucella</i>		(Fabricius, 1775)
17.008	458	<i>Ypsolopha alpella</i>		([Denis & Schiffermüller], 1775)
17.009	459	<i>Ypsolopha sylvella</i>		(Linnaeus, 1767)
17.010	460	<i>Ypsolopha parenthesesella</i>		(Linnaeus, 1761)
17.011	461	<i>Ypsolopha ustella</i>		(Clerck, 1759)
17.012	462	<i>Ypsolopha sequella</i>		(Clerck, 1759)
17.013	463	<i>Ypsolopha vittella</i>		(Linnaeus, 1758)

#### Ochsenheimeriinae

17.014	251	<i>Ochsenheimeria taurella</i>		([Denis & Schiffermüller], 1775)
17.016	253	<i>Ochsenheimeria vacculella</i>		(Fischer von Röslerstamm, 1842)

#### Plutellidae

18.001	464	<i>Plutella xylostella</i>	<b>Diamond-back Moth</b>	(Linnaeus, 1758)
18.003	465	<i>Plutella porrectella</i>		(Linnaeus, 1758)
18.007	469	<i>Eidophasia messingiella</i>		(Fischer von Röslerstamm, 1840)

#### Glyphipterigidae

##### Orthoteliinae

19.001	470	<i>Orthotelia sparganella</i>		(Thunberg, 1788)
--------	-----	-------------------------------	--	------------------

##### Glyphipteriginae

19.003	396	<i>Glyphipterix fuscoviridella</i>		(Haworth, 1828)
19.006	394	<i>Glyphipterix forsterella</i>		(Fabricius, 1781)
19.007	391	<i>Glyphipterix simplicella</i>	<b>Cock's-foot Moth</b>	(Stephens, 1834)

##### Acrolepiinae

19.011	473	<i>Acrolepiopsis assectella</i>	<b>Leek Moth</b>	(Zeller, 1839)
19.014	476	<i>Acrolepia autumnitella</i>		(Curtis, 1838)

#### Argyresthiidae

20.003	404	<i>Argyresthia praecocella</i>		(Zeller, 1839)
20.004	405	<i>Argyresthia arceuthina</i>		(Zeller, 1839)
20.005	409a	<i>Argyresthia trifasciata</i>		(Staudinger, 1871)
20.006	407	<i>Argyresthia dilectella</i>		(Zeller, 1847)
20.007	409b	<i>Argyresthia cupressella</i>		(Walsingham, 1890)
20.009	408	<i>Argyresthia aurulentella</i>		(Stainton, 1849)
20.010	409	<i>Argyresthia ivella</i>		(Haworth, 1828)
20.011	410	<i>Argyresthia brockeeella</i>		(Hübner, [1813])
20.012	411	<i>Argyresthia goedartella</i>		(Linnaeus, 1758)
20.013	412	<i>Argyresthia pygmaeella</i>		([Denis & Schiffermüller], 1775)
20.014	413	<i>Argyresthia sorbiella</i>		(Treitschke, 1833)
20.015	414	<i>Argyresthia curvella</i>		(Linnaeus, 1761)
20.016	415	<i>Argyresthia retinella</i>		(Zeller, 1839)
20.017	416	<i>Argyresthia glaucinella</i>		(Zeller, 1839)
20.018	417	<i>Argyresthia spinosella</i>		(Stainton, 1849)
20.019	418	<i>Argyresthia conjugella</i>		(Zeller, 1839)
20.020	419	<i>Argyresthia semifusca</i>		(Haworth, 1828)
20.021	420	<i>Argyresthia pruniella</i>		(Clerck, 1759)
20.022	421	<i>Argyresthia bonnetella</i>		(Linnaeus, 1758)
20.023	422	<i>Argyresthia albistria</i>		(Haworth, 1828)
20.024	423	<i>Argyresthia semitestacella</i>		(Curtis, 1833)

#### Lyonetiidae

##### Lyonetiinae

21.001	263	<i>Lyonetia clerkella</i>		(Linnaeus, 1758)
21.004	254	<i>Leucoptera laburnella</i>		(Stainton, 1851)
21.005	256	<i>Leucoptera spartifoliella</i>		(Hübner, [1813])
21.008	260	<i>Leucoptera malifoliella</i>		(Costa, [1836])

#### Praydidae

22.002	449	<i>Prays fraxinella</i>	<b>Ash Bud Moth</b>	(Bjerkander, 1784)
22.003	448a	<i>Prays ruficeps</i>		(Heinemann, 1854)



**Bedelliidae**

24.001 264 *Bedellia somnulentella* (Zeller, 1847)

**Scythropiidae**

25.001 450 *Scythropia crataegella* **Hawthorn Moth** (Linnaeus, 1767)

**Autostichidae**

27.001 870 *Oegoconia quadripuncta* (Haworth, 1828)  
 27.002 871a *Oegoconia caradjai* (Popescu-Gorj & C?pu?e, 1965)  
 27.003 871 *Oegoconia deauratella* (Herrich-Schäffer, 1854)

**Oecophoridae**

## Oecophorinae

28.008 636 *Denisia similella* (Hübner, 1796)  
 28.009 648 *Endrosis sarcitrella* **White-shouldered House Moth** (Linnaeus, 1758)  
 28.010 647 *Hofmannophila pseudospretella* **Brown House Moth** (Stainton, 1849)  
 28.012 644 *Borkhausenia fuscescens* (Haworth, 1828)  
 28.014 642 *Crassa unitella* (Hübner, 1796)  
 28.015 640 *Batia lunaris* (Haworth, 1828)  
 28.017 641 *Batia lambdella* (Donovan, 1793)  
 28.019 649 *Esperia sulphurella* (Fabricius, 1775)  
 28.021 651 *Oecophora bractella* (Linnaeus, 1758)  
 28.022 652 *Alabonia geoffrella* (Linnaeus, 1767)  
 28.024 656 *Tachystola acroxantha* (Meyrick, 1885)

**Chimabachidae**

29.001 663 *Diurnea fagella* ([Denis & Schiffermüller], 1775)  
 29.002 664 *Diurnea lipsiella* ([Denis & Schiffermüller], 1775)  
 29.003 665 *Dasystema salicella* (Hübner, 1796)

**Lypusidae**

30.004 659 *Amphisbatis incongruella* (Stainton, 1849)

**Peleopodidae**

31.001 658 *Carcina quercana* (Fabricius, 1775)

**Depressariidae**

## Depressariinae

32.001 666 *Semioscopis avellanella* (Hübner, 1793)  
 32.002 667 *Semioscopis steinkellneriana* ([Denis & Schiffermüller], 1775)  
 32.003 668 *Luquetia lobella* ([Denis & Schiffermüller], 1775)  
 32.006 687 *Exaerata allisella* Stainton, 1849  
 32.007 701 *Agonopterix ocellana* (Fabricius, 1775)  
 32.008 709 *Agonopterix liturosa* (Haworth, 1811)  
 32.009 691 *Agonopterix purpurea* (Haworth, 1811)  
 32.010 710 *Agonopterix conterminella* (Zeller, 1839)  
 32.011 704 *Agonopterix scopariella* (Heinemann, 1870)  
 32.015 692 *Agonopterix subpropinquella* (Stainton, 1849)  
 32.016 696 *Agonopterix propinquella* (Treitschke, 1835)  
 32.017 697 *Agonopterix arenella* ([Denis & Schiffermüller], 1775)  
 32.018 688 *Agonopterix heracliana* (Linnaeus, 1758)  
 32.019 689 *Agonopterix ciliella* (Stainton, 1849)  
 32.024 702 *Agonopterix assimilella* (Treitschke, 1832)  
 32.026 698 *Agonopterix kaekeritziana* (Linnaeus, 1767)  
 32.029 705 *Agonopterix umbellana* (Fabricius, 1794)  
 32.030 706 *Agonopterix nervosa* (Haworth, 1811)  
 32.031 695 *Agonopterix alstromeriana* (Clerck, 1759)  
 32.032 713 *Agonopterix angelicella* (Hübner, [1813])  
 32.035 714 *Agonopterix yeatiana* (Fabricius, 1781)  
 32.036 672 *Depressaria radiella* **Parsnip Moth** (Goeze, 1783)  
 32.038 674 *Depressaria badiella* (Hübner, 1796)  
 32.043 678 *Depressaria sordidatella* (Tengström, 1848)  
 32.047 682 *Depressaria chaerophylli* Zeller, 1839  
 32.048 683 *Depressaria depressana* (Fabricius, 1775)  
 32.050 646 *Telechrysis tripuncta* (Haworth, 1828)

**Ethmiidae**

## Ethmiinae

33.002 719 *Ethmia quadrillella* (Goeze, 1783)

**Cosmopterigidae**

## Antequerinae

34.001 899 *Panacalia leuwenhoekella* (Linnaeus, 1761)

## Cosmopteriginae

34.004 898 *Limnaecia phragmitella* (Stainton, 1851)

34.010 897 *Cosmopterix lienigiella* (Zeller, 1846)

**Gelechiidae**

## Anacampsinae

35.002 849 *Syncopacma cinctella* (Clerck, 1759)

35.003 844 *Syncopacma larseniella* (Gozmany, 1957)

35.004 847 *Syncopacma taeniolaella* (Zeller, 1839)

35.010 843 *Aproaerema anthyllidella* (Hübner, [1813])

35.011 853 *Anacampsis populella* (Clerck, 1759)

35.012 854 *Anacampsis blattariella* (Hübner, 1796)

35.017 797 *Neofaculta ericetella* (Geyer, [1832])

35.018 858 *Hypatima rhomboidella* (Linnaeus, 1758)

35.020 856 *Anarsia spartiella* (Schrank, 1802)

## Dichomeridinae

35.022 862 *Dichomeris marginella* **Juniper Webber** (Linnaeus, 1761)

35.028 866 *Brachmia blandella* (Fabricius, 1798)

35.031 868 *Helcystogramma rufescens* (Haworth, 1828)

## Apatetrinae

35.035 746 *Chrysoesthia drurella* (Fabricius, 1775)

35.036 747 *Chrysoesthia sexguttella* (Thunberg, 1794)

## Anomologinae

35.038 789 *Bryotropha domestica* (Haworth, 1828)

35.040 787 *Bryotropha terrella* ([Denis & Schiffermüller], 1775)

35.041 786 *Bryotropha desertella* (Douglas, 1850)

35.046 782 *Bryotropha senectella* (Zeller, 1839)

35.047 779 *Bryotropha affinis* (Haworth, 1828)

35.050 752 *Aristotelia ericinella* (Zeller, 1839)

35.053 729 *Isophrictis striatella* ([Denis & Schiffermüller], 1775)

35.056 724 *Metzneria lappella* (Linnaeus, 1758)

35.058 726 *Metzneria metzneriella* (Stainton, 1851)

35.060 730 *Apodia bifractella* (Duponchel, [1843])

35.065 728 *Monochroa cytisella* (Curtis, 1837)

35.066 735 *Monochroa tenebrella* (Hübner, 1817)

35.070 742 *Monochroa lutulentella* (Zeller, 1839)

35.071 736 *Monochroa lucidella* (Zeller, 1839)

35.073 737 *Monochroa palustrellus* (Douglas, 1850)

35.079 733 *Eulamprotes wilkella* (Linnaeus, 1758)

35.080 732 *Eulamprotes unicolorella* (Duponchel, [1843])

35.081 731 *Eulamprotes atrella* ([Denis & Schiffermüller], 1775)

## Gelechiinae

35.085 762 *Athrips mouffetella* (Linnaeus, 1758)

35.091 841 *Sophronia semicostella* (Hübner, [1813])

35.093 792 *Mirificarma mulinella* (Zeller, 1839)

35.094 796 *Aroga velocella* (Zeller, 1839)

35.095 791 *Chionodes distinctella* (Douglas, 1850)

35.097 800 *Gelechia rhombella* ([Denis & Schiffermüller], 1775)

35.101 802a *Gelechia sororculella* (Hübner, [1817])

35.102 803 *Gelechia muscosella* (Zeller, 1839)

35.105 806 *Gelechia nigra* (Haworth, 1828)

35.106 807 *Gelechia turpella* ([Denis & Schiffermüller], 1775)

35.107 859 *Psoricoptera gibbosella* (Zeller, 1839)

35.109 822 *Scrobipalpa acuminatella* (Sircom, 1850)

35.117 818 *Scrobipalpa atriplicella* (Fischer von Röslerstamm, 1841)

35.123 819 *Scrobipalpa costella* (Humphreys & Westwood, 1845)

35.132 830 *Caryocolum fraternella* (Douglas, 1851)

35.133 832 *Caryocolum blandella* (Douglas, 1852)

35.137 834 *Caryocolum tricolorella* (Haworth, 1812)

35.141 765 *Teleiodes vulgella* ([Denis & Schiffermüller], 1775)

35.143 774 *Teleiodes luculella* (Hübner, [1813])

35.146	776	<i>Teleiopsis diffinis</i>	(Haworth, 1828)
35.147	767	<i>Carpatolechia decorella</i>	(Haworth, 1812)
35.148	772	<i>Carpatolechia fugitivella</i>	(Zeller, 1839)
35.149	771	<i>Carpatolechia alburnella</i>	(Zeller, 1839)
35.150	768	<i>Carpatolechia notatella</i>	(Hübner, [1813])
35.151	770	<i>Carpatolechia proximella</i>	(Hübner, 1796)
35.152	764	<i>Pseudotelphusa scalella</i>	(Scopoli, 1763)
35.153	773	<i>Pseudotelphusa paripunctella</i>	(Thunberg, 1794)
35.155	763	<i>Xenolechia aethiops</i>	(Humphreys & Westwood, 1845)
35.157	757	<i>Recurvaria nanella</i>	([Denis & Schiffermüller], 1775)
35.157	758	<i>Recurvaria leucatella</i>	(Clerck, 1759)
35.159	760	<i>Exoteleia dodecella</i>	(Linnaeus, 1758)
35.160	755	<i>Stenolechia gemmella</i>	(Linnaeus, 1758)
35.161	756	<i>Parachronistis albiceps</i>	(Zeller, 1839)

#### Batrachedidae

36.001	878	<i>Batrachedra praeangusta</i>	(Haworth, 1828)
36.002	879	<i>Batrachedra pinicolella</i>	(Zeller, 1839)

#### Coleophoridae

37.005	490	<i>Coleophora lutipennella</i>	(Zeller, 1838)
37.006	491	<i>Coleophora gryphipennella</i>	(Hübner, 1796)
37.007	492	<i>Coleophora flavipennella</i>	(Duponchel, [1843])
37.009	496	<i>Coleophora milvipennis</i>	(Zeller, 1839)
37.011	497	<i>Coleophora badiipennella</i>	(Duponchel, [1843])
37.012	499	<i>Coleophora limosipennella</i>	(Duponchel, [1843])
37.014	494	<i>Coleophora coracipennella</i>	(Hübner, 1796)
37.015	493	<i>Coleophora serratella</i>	(Linnaeus, 1761)
37.016	495	<i>Coleophora spinella</i>	(Schrank, 1802)
37.022	504	<i>Coleophora lusciniapennella</i>	(Treitschke, 1833)
37.026	509	<i>Coleophora violacea</i>	(Ström, 1783)
37.027	513	<i>Coleophora potentillae</i>	(Elisha, 1885)
37.028	510	<i>Coleophora juncicolella</i>	(Stainton, 1851)
37.030	512	<i>Coleophora binderella</i>	(Kollar, 1832)
37.032	515	<i>Coleophora albitarsella</i>	(Zeller, 1849)
37.033	516	<i>Coleophora trifolii</i>	(Curtis, 1832)
37.034	517a	<i>Coleophora frischella</i>	(Linnaeus, 1758)
37.035	517	<i>Coleophora alcyonipennella</i>	(Kollar, 1832)
37.038	522	<i>Coleophora lineolea</i>	(Haworth, 1828)
37.039	523	<i>Coleophora hemerobiella</i>	(Scopoli, 1763)
37.040	524	<i>Coleophora lithargyrinella</i>	(Zeller, 1849)
37.042	545	<i>Coleophora saturatella</i>	(Stainton, 1850)
37.044	547	<i>Coleophora discordella</i>	(Zeller, 1849)
37.048	518	<i>Coleophora mayrella</i>	(Hübner, [1813])
37.049	533	<i>Coleophora anatipennella</i>	(Hübner, 1796)
37.050	532	<i>Coleophora albidella</i>	([Denis & Schiffermüller], 1775)
37.051	537	<i>Coleophora kuehnella</i>	(Goeze, 1783)
37.052	535	<i>Coleophora ibipennella</i>	(Zeller, 1849)
37.053	536	<i>Coleophora betulella</i>	(Heinemann, [1876])
37.055	541	<i>Coleophora pyrrhulipennella</i>	(Zeller, 1839)
37.063	544	<i>Coleophora albicosta</i>	(Haworth, 1828)
37.066	526	<i>Coleophora laricella</i>	(Hübner, [1817])
37.068	586	<i>Coleophora adjunctella</i>	(Hodgkinson, 1882)
37.069	587	<i>Coleophora caespitiella</i>	(Zeller, 1839)
37.071	582	<i>Coleophora glaucicolella</i>	(Wood, 1892)
37.072	578	<i>Coleophora otidipennella</i>	(Hübner, [1817])
37.073	584	<i>Coleophora alticolella</i>	(Zeller, 1849)
37.080	564	<i>Coleophora virgaureae</i>	(Stainton, 1857)
37.081	561	<i>Coleophora therinella</i>	Tengström, 1848
37.083	565	<i>Coleophora saxicolella</i>	(Duponchel, [1843])
37.084	566	<i>Coleophora sternipennella</i>	(Zetterstedt, 1839)
37.090	577	<i>Coleophora artemisicolella</i>	(Bruand, [1855])
37.093	559	<i>Coleophora peribenanderi</i>	(Toll, 1943)
37.098	554	<i>Coleophora inulae</i>	(Wocke, [1876])
37.102	563	<i>Coleophora argentula</i>	(Stephens, 1834)
37.103	555	<i>Coleophora follicularis</i>	(Vallot, 1802)
37.104	567	<i>Coleophora adpersella</i>	Benander, 1939
37.106	560	<i>Coleophora paripennella</i>	(Zeller, 1839)

#### Large Clover Case-bearer

#### Elachistidae

38.004	610	<i>Elachista argentella</i>	(Clerck, 1759)
38.005	611	<i>Elachista triatomea</i>	(Haworth, 1828)

38.016	621	<i>Elachista subalbidella</i>	(Schläger, 1847)
38.017	622	<i>Elachista adscitella</i>	(Stainton, 1851)
38.022	594	<i>Elachista gleichenella</i>	(Fabricius, 1781)
38.025	597	<i>Elachista atricomella</i>	(Stainton, 1849)
38.029	600	<i>Elachista luticomella</i>	(Zeller, 1839)
38.030	601	<i>Elachista albifrontella</i>	(Hübner, [1817])
38.032	602	<i>Elachista apicipunctella</i>	(Stainton, 1849)
38.033	603	<i>Elachista subnigrella</i>	(Douglas, 1853)
38.037	607	<i>Elachista canapennella</i>	(Hübner, [1813])
38.038	608	<i>Elachista rufocinerea</i>	(Haworth, 1828)
38.039	609	<i>Elachista maculicerusella</i>	(Bruand, 1859)
38.045	629	<i>Elachista utonella</i>	(Frey, 1856)
38.046	630	<i>Elachista albidella</i>	Nylander, [1848]
38.047	631	<i>Elachista freyerella</i>	(Hübner, [1825])

#### Parametriotidae

39.001	905	<i>Blastodacna hellerella</i>	(Duponchel, 1838)
39.002	906	<i>Blastodacna atra</i>	(Haworth, 1828)
39.003	904	<i>Spuleria flavicaput</i>	(Haworth, 1828)
39.004	907	<i>Dystebenna stephensi</i>	(Stainton, 1849)
39.005	903	<i>Chrysoclista linneella</i>	(Clerck, 1759)
39.006	902	<i>Chrysoclista lathamella</i>	(Fletcher, 1936)

#### Apple Pith Moth

#### Momphidae

40.001	885	<i>Mompha conturbatella</i>	(Hübner, [1819])
40.002	886	<i>Mompha ochraceella</i>	(Curtis, 1839)
40.004	888	<i>Mompha propinquella</i>	(Stainton, 1851)
40.006	890	<i>Mompha jurassicella</i>	(Frey, 1881)
40.007	889a	<i>Mompha bradleyi</i>	(Riedl, 1965)
40.008	892	<i>Mompha subbistrigella</i>	(Haworth, 1828)
40.009	891	<i>Mompha sturnipenella</i>	(Treitschke, 1833)
40.010	893	<i>Mompha epilobiella</i>	([Denis & Schiffermüller], 1775)
40.011	880	<i>Mompha langiella</i>	(Hübner, 1796)
40.012	884	<i>Mompha miscella</i>	([Denis & Schiffermüller], 1775)
40.013	882	<i>Mompha locupletella</i>	([Denis & Schiffermüller], 1775)
40.014	881	<i>Mompha terminella</i>	(Humphreys & Westwood, 1845)
40.015	883	<i>Mompha raschkiella</i>	(Zeller, 1839)

#### Blastobasidae

41.002	873	<i>Blastobasis adustella</i>	(Walsingham, 1894)
41.003	874	<i>Blastobasis lacticolella</i>	(Rebel, 1940)

#### Stathmopodidae

42.002	877	<i>Stathmopoda pedella</i>	(Linnaeus, 1761)
--------	-----	----------------------------	------------------

#### Alucitidae

44.001	1288	<i>Alucita hexadactyla</i>	<b>Twenty-plume Moth</b> (Linnaeus, 1758)
--------	------	----------------------------	--

#### Pterophoridae

##### Pterophorinae

45.004	1501	<i>Platyptilia gonodactyla</i>	([Denis & Schiffermüller], 1775)
45.008	1504	<i>Gillmeria pallidactyla</i>	(Haworth, 1811)
45.009	1503	<i>Gillmeria ochrodactyla</i>	([Denis & Schiffermüller], 1775)
45.010	1497	<i>Amblyptilia acanthodactyla</i>	(Hübner, [1813])
45.011	1498	<i>Amblyptilia punctidactyla</i>	(Haworth, 1811)
45.012	1509	<i>Stenoptilia pterodactyla</i>	(Linnaeus, 1761)
45.013	1508	<i>Stenoptilia bipunctidactyla</i>	(Scopoli, 1763)
45.021	1507	<i>Stenoptilia zophodactylus</i>	(Duponchel, 1840)
45.023	1495	<i>Marasmarcha lunaedactyla</i>	(Haworth, 1811)
45.028	1494	<i>Capperia britanniodactylus</i>	(Gregson, 1869)
45.030	1513	<i>Pterophorus pentadactyla</i>	(Linnaeus, 1758)
45.031	1514	<i>Porritia galactodactyla</i>	([Denis & Schiffermüller], 1775)
45.032	1511	<i>Merrifieldia tridactyla</i>	(Linnaeus, 1758)
45.033	1510	<i>Merrifieldia leucodactyla</i>	([Denis & Schiffermüller], 1775)
45.037	1523	<i>Oidaematophorus lithodactyla</i>	(Treitschke, 1833)
45.041	1520	<i>Hellinsia osteodactylus</i>	(Zeller, 1841)
45.043	1517	<i>Adaina microdactyla</i>	(Hübner, [1813])
45.044	1524	<i>Emmelina monodactyla</i>	(Linnaeus, 1758)

**Schreckensteiniidae**

46.001 485 *Schreckensteinia festaliella* (Hübner, [1819])

**Epermeniidae**

## Epermeniinae

47.001 478 *Phaulernis fulviguttella* (Zeller, 1839)  
 47.005 483 *Epermenia chaerophyllella* (Goeze, 1783)  
 47.006 481 *Epermenia falciformis* (Haworth, 1828)

**Choreutidae**

## Choreutinae

48.001 385 *Anthophila fabriciana* **Nettle Tap** (Linnaeus, 1767)  
 48.002 388 *Prochoreutis myllerana* (Fabricius, 1794)  
 48.003 387 *Prochoreutis sehestediana* (Fabricius, [1777])  
 48.007 389 *Choreutis pariana* **Apple-leaf Skeletonizer** (Clerck, 1759)

**Tortricidae**

## Chlidanotinae

49.001 1013 *Olindia schumacherana* (Fabricius, 1787)  
 49.002 1014 *Isotrias rectifasciana* (Haworth, 1811)

## Tortricinae

49.004 1010 *Ditula angustiorana* **Red-barred Tortrix** (Haworth, 1811)  
 49.005 1006 *Epagoge grotiana* (Fabricius, 1781)  
 49.009 1007 *Capua vulgana* (Frölich, 1828)  
 49.013 977 *Archips podana* **Large Fruit-tree Tortrix** (Scopoli, 1763)  
 49.014 979 *Archips crataegana* **Brown Oak Tortrix** (Hübner, [1799])  
 49.015 980 *Archips xylosteara* **Variogated Golden Tortrix** (Linnaeus, 1758)  
 49.016 981 *Archips rosana* **Rose Tortrix** (Linnaeus, 1758)  
 49.018 983 *Choristoneura hebenstreitella* (Müller, 1764)  
 49.020 974 *Argyrotaenia ljugiana* (Thunberg, 1797)  
 49.021 987 *Ptycholomoides aeriferana* (Herrich-Schäffer, 1851)  
 49.022 1000 *Ptycholoma lecheana* (Linnaeus, 1758)  
 49.023 971 *Pandemis cinnamomeana* (Treitschke, 1830)  
 49.024 969 *Pandemis corylana* **Chequered Fruit-tree Tortrix** (Fabricius, 1794)  
 49.025 970 *Pandemis cerasana* **Barred Fruit-tree Tortrix** (Hübner, 1786)  
 49.026 972 *Pandemis heparana* **Dark Fruit-tree Tortrix** ([Denis & Schiffermüller], 1775)  
 49.027 973 *Pandemis dumetana* (Treitschke, 1835)  
 49.028 986 *Syndemis musculana* (Hübner, [1799])  
 49.029 1002 *Lozotaenia forsterana* (Fabricius, 1781)  
 49.030 985 *Cacoecimorpha pronubana* **Carnation Tortrix** (Hübner, [1799])  
 49.031 989 *Aphelia paleana* **Timothy Tortrix** (Hübner, 1793)  
 49.033 988 *Aphelia viburnana* **Bilberry Tortrix** ([Denis & Schiffermüller], 1775)  
 49.037 993 *Clepsis spectrana* **Cyclamen Tortrix** (Treitschke, 1830)  
 49.038 994 *Clepsis consimilana* (Hübner, [1817])  
 49.039 998 *Epiphyas postvittana* **Light Brown Apple Moth** (Walker, 1863)  
 49.040 1001 *Lozotaeniodes formosana* (Frölich, 1830)  
 49.042 1027 *Neosphaleroptera nubilana* (Hübner, [1799])  
 49.043 1026 *Exapate congelatella* (Clerck, 1759)  
 49.044 1025 *Tortricodes alternella* ([Denis & Schiffermüller], 1775)  
 49.045 1029 *Eana osseana* (Scopoli, 1763)  
 49.047 1030 *Eana incanana* (Stephens, 1852)  
 49.049 1024 *Cnephasia incertana* **Light Grey Tortrix** (Treitschke, 1835)  
 49.050 1020 *Cnephasia stephensiana* (Doubleday, [1849])  
 49.051 1021 *Cnephasia asseclana* ([Denis & Schiffermüller], 1775)  
 49.056 1019 *Cnephasia conspersana* (Douglas, 1846)  
 49.057 1016 *Cnephasia longana* (Haworth, 1811)  
 49.058 1034 *Spatalistis bifasciana* (Hübner, [1787])  
 49.059 1033 *Tortrix viridana* **Green Oak Tortrix** (Linnaeus, 1758)  
 49.060 1032 *Aleimma loeflingiana* (Linnaeus, 1758)  
 49.061 1037 *Acleris holmiana* (Linnaeus, 1758)  
 49.062 1036 *Acleris forsskaleana* (Linnaeus, 1758)  
 49.063 1035 *Acleris bergmanniana* (Linnaeus, 1758)  
 49.065 1039 *Acleris comariana* **Strawberry Tortrix** (Lienig & Zeller, 1846)  
 49.066 1038 *Acleris laterana* (Fabricius, 1794)  
 49.069 1041 *Acleris sparsana* ([Denis & Schiffermüller], 1775)  
 49.070 1042 *Acleris rhombana* **Rhomboid Tortrix** ([Denis & Schiffermüller], 1775)  
 49.071 1062 *Acleris emargana* (Fabricius, 1775)  
 49.073 1047 *Acleris schalleriana* (Linnaeus, 1761)  
 49.076 1054 *Acleris cristana* ([Denis & Schiffermüller], 1775)  
 49.077 1048 *Acleris variegana* **Garden Rose Tortrix** ([Denis & Schiffermüller], 1775)

49.078	1043	<i>Acleris aspersana</i>	(Hübner, [1817])
49.080	1053	<i>Acleris hastiana</i>	(Linnaeus, 1758)
49.082	1055	<i>Acleris hyemana</i>	(Haworth, 1811)
49.083	1044	<i>Acleris ferrugana</i>	([Denis & Schiffermüller], 1775)
49.084	1045	<i>Acleris notana</i>	(Donovan, 1806)
49.086	1051	<i>Acleris logiana</i>	(Clerck, 1759)
49.087	1061	<i>Acleris literana</i>	(Linnaeus, 1758)
49.090	1015	<i>Eulia ministrana</i>	(Linnaeus, 1758)
49.091	1011	<i>Pseudargyrotoza conwagana</i>	(Fabricius, 1775)
49.095	925	<i>Phtheochroa rugosana</i>	(Hübner, [1799])
49.097	936	<i>Cochylimorpha straminea</i>	(Haworth, 1811)
49.101	926	<i>Phalonidia manniana</i>	(Fischer von Röslerstamm, 1839)
49.106	927	<i>Gynnidomorpha minimana</i>	(Caradja, 1916)
49.108	930	<i>Gynnidomorpha alismana</i>	(Ragonot, 1883)
49.109	937	<i>Agapeta hamana</i>	(Linnaeus, 1758)
49.110	938	<i>Agapeta zoegana</i>	(Linnaeus, 1767)
49.111	954	<i>Eupoecilia angustana</i>	(Hübner, [1799])
49.113	952	<i>Commophila aeneana</i>	(Hübner, [1800])
49.114	941	<i>Aethes hartmanniana</i>	(Clerck, 1759)
49.120	947	<i>Aethes smeathmanniana</i>	(Fabricius, 1781)
49.123	951	<i>Aethes beatricella</i>	(Walsingham, 1898)
49.124	950	<i>Aethes francillana</i>	(Fabricius, 1794)
49.127	945	<i>Aethes cnicana</i>	(Westwood, 1854)
49.128	946	<i>Aethes rubigana</i>	(Treitschke, 1830)
49.133	968	<i>Cochylis nana</i>	(Haworth, 1811)
49.134	962	<i>Cochylis roseana</i>	(Haworth, 1811)
49.136	965	<i>Cochylis hybridella</i>	(Hübner, [1813])
49.137	964	<i>Cochylis dubitana</i>	(Hübner, [1799])
49.139	966	<i>Cochylis atricapitana</i>	(Stephens, 1852)

#### Olethreutinae

49.144	1113	<i>Eudemis profundana</i>	([Denis & Schiffermüller], 1775)
49.146	1089	<i>Apotomis semifasciana</i>	(Haworth, 1811)
49.148	1091	<i>Apotomis lineana</i>	([Denis & Schiffermüller], 1775)
49.149	1092	<i>Apotomis turbidana</i>	(Hübner, [1825])
49.150	1093	<i>Apotomis betuletana</i>	(Haworth, 1811)
49.151	1094	<i>Apotomis capreana</i>	(Hübner, 1817)
49.152	1095	<i>Apotomis sororculana</i>	(Zetterstedt, 1839)
49.154	1087	<i>Orthotaenia undulana</i>	([Denis & Schiffermüller], 1775)
49.155	1086	<i>Hedya salicella</i>	(Linnaeus, 1758)
49.156	1083	<i>Hedya nubiferana</i>	(Haworth, 1811)
49.157	1082	<i>Hedya pruniana</i>	(Hübner, [1799])
49.158	1084	<i>Hedya ochroleucana</i>	(Frölich, 1828)
49.159	1085	<i>Hedya atropunctana</i>	(Zetterstedt, 1839)
49.161	1063	<i>Celypha striana</i>	([Denis & Schiffermüller], 1775)
49.162	1064	<i>Celypha rosaceana</i>	(Schläger, 1847)
49.166	1076	<i>Celypha lacunana</i>	([Denis & Schiffermüller], 1775)
49.180	1079	<i>Piniphila bifasciana</i>	(Haworth, 1811)
49.183	1108	<i>Lobesia abscisana</i>	(Doubleday, [1849])
49.184	1106	<i>Lobesia reliquana</i>	(Hübner, [1825])
49.185	1109	<i>Lobesia littoralis</i>	(Westwood & Humphreys, 1845)
49.186	1097	<i>Endothenia gentianaeana</i>	(Hübner, [1799])
49.188	1099	<i>Endothenia marginana</i>	(Haworth, 1811)
49.191	1102	<i>Endothenia nigricostana</i>	(Haworth, 1811)
49.192	1103	<i>Endothenia ericetana</i>	(Humphreys & Westwood, 1845)
49.193	1104	<i>Endothenia quadrimaculana</i>	(Haworth, 1811)
49.194	1111	<i>Bactra lancealana</i>	(Hübner, [1799])
49.195	1110	<i>Bactra furfurana</i>	(Haworth, 1811)
49.196	1111a	<i>Bactra lacteana</i>	Caradja, 1916
49.199	1217	<i>Eucosmomorpha albersana</i>	(Hübner, [1813])
49.200	1216	<i>Enarmonia formosana</i>	(Scopoli, 1763)
49.202	1118	<i>Ancylis uncella</i>	([Denis & Schiffermüller], 1775)
49.203	1123	<i>Ancylis laetana</i>	(Fabricius, 1775)
49.206	1121	<i>Ancylis upupana</i>	(Treitschke, 1835)
49.207	1119	<i>Ancylis geminana</i>	(Donovan, 1806)
49.209	1119a	<i>Ancylis diminutana</i>	(Haworth, 1811)
49.211	1128	<i>Ancylis myrtilana</i>	(Treitschke, 1830)
49.214	1126	<i>Ancylis badiana</i>	([Denis & Schiffermüller], 1775)
49.215	1115	<i>Ancylis achatana</i>	([Denis & Schiffermüller], 1775)
49.216	1120	<i>Ancylis mitterbacheriana</i>	([Denis & Schiffermüller], 1775)
49.222	1158	<i>Rhopobota ustomaculana</i>	(Curtis, 1831)
49.223	1159	<i>Rhopobota naevana</i>	(Hübner, [1817])
49.224	1205	<i>Spilonota ocellana</i>	([Denis & Schiffermüller], 1775)
49.228	1153	<i>Epinotia sordidana</i>	(Hübner, [1824])
49.229	1154	<i>Epinotia caprana</i>	(Fabricius, 1798)

#### Marbled Orchard Tortrix Plum Tortrix

#### Cherry Bark Moth

#### Holly Tortrix

49.230	1151	<i>Epinotia trigonella</i>	(Linnaeus, 1758)
49.231	1155	<i>Epinotia brunnichana</i>	(Linnaeus, 1767)
49.232	1152	<i>Epinotia maculana</i>	(Fabricius, 1775)
49.233	1156	<i>Epinotia solandriana</i>	(Linnaeus, 1758)
49.234	1150	<i>Epinotia abbreviana</i>	(Fabricius, 1794)
49.237	1144	<i>Epinotia signatana</i>	(Douglas, 1845)
49.238	1147	<i>Epinotia cruciana</i>	(Linnaeus, 1761)
49.240	1136	<i>Epinotia immundana</i>	(Fischer von Röslerstamm, 1839)
49.242	1145	<i>Epinotia nanana</i>	(Treitschke, 1835)
49.243	1135	<i>Epinotia demarniana</i>	(Fischer von Röslerstamm, 1840)
49.244	1132	<i>Epinotia subocellana</i>	(Donovan, 1806)
49.245	1137	<i>Epinotia tetraquetrana</i>	(Haworth, 1811)
49.248	1139	<i>Epinotia tenerana</i>	([Denis & Schiffermüller], 1775)
49.249	1134	<i>Epinotia ramella</i>	(Linnaeus, 1758)
49.251	1146	<i>Epinotia rubiginosana</i>	(Herrich-Schäffer, 1851)
49.252	1142	<i>Epinotia tedella</i>	(Clerck, 1759)
49.253	1143	<i>Epinotia fraternana</i>	(Haworth, 1811)
49.254	1133	<i>Epinotia bilunana</i>	(Haworth, 1811)
49.255	1138	<i>Epinotia nisella</i>	(Clerck, 1759)
49.257	1166	<i>Zeiraphera griseana</i>	(Hübner, [1799])
49.259	1163	<i>Zeiraphera ratzeburgiana</i>	(Ratzeburg, 1840)
49.260	1165	<i>Zeiraphera isertana</i>	(Fabricius, 1794)
49.264	1202	<i>Eucosma obumbratana</i>	(Lienig & Zeller, 1846)
49.265	1201	<i>Eucosma cana</i>	(Haworth, 1811)
49.266	1200	<i>Eucosma hohenwartiana</i>	([Denis & Schiffermüller], 1775)
49.269	1197	<i>Eucosma campoliliana</i>	([Denis & Schiffermüller], 1775)
49.270	1194	<i>Eucosma aemulana</i>	(Schläger, 1849)
49.275	1192	<i>Eucosma conterminana</i>	(Guenée, 1845)
49.277	1199	<i>Eucosma pupillana</i>	(Clerck, 1759)
49.278	1171	<i>Gypsonoma minutana</i>	(Hübner, [1799])
49.279	1169	<i>Gypsonoma dealbana</i>	(Frölich, 1828)
49.280	1170	<i>Gypsonoma oppressana</i>	(Treitschke, 1835)
49.281	1168	<i>Gypsonoma sociana</i>	(Haworth, 1811)
49.283	1167	<i>Gypsonoma aceriana</i>	(Duponchel, [1843])
49.284	1186	<i>Epiblema sticticana</i>	(Fabricius, 1794)
49.285	1184	<i>Epiblema scutulana</i>	([Denis & Schiffermüller], 1775)
49.286	1184a	<i>Epiblema cirsiana</i>	(Zeller, 1843)
49.288	1183	<i>Epiblema foenella</i>	(Linnaeus, 1758)
49.289	1187	<i>Epiblema costipunctana</i>	(Haworth, 1811)
49.292	1174	<i>Notocelia cynosbatella</i>	(Linnaeus, 1758)
49.294	1175	<i>Notocelia uddmanniana</i>	(Linnaeus, 1758)
49.295	1178	<i>Notocelia roborana</i>	([Denis & Schiffermüller], 1775)
49.296	1179	<i>Notocelia incarnatana</i>	(Hübner, [1800])
49.297	1177	<i>Notocelia rosaecolana</i>	(Doubleday, 1850)
49.298	1176	<i>Notocelia trimaculana</i>	(Haworth, 1811)
49.299	1208	<i>Pseudococcyx posticana</i>	(Zetterstedt, 1839)
49.300	1209	<i>Pseudococcyx turionella</i>	(Linnaeus, 1758)
49.304	1207	<i>Clavigesta purdeyi</i>	(Durrant, 1911)
49.305	1210	<i>Rhyacionia buoliana</i>	([Denis & Schiffermüller], 1775)
49.306	1211	<i>Rhyacionia pinicolana</i>	(Doubleday, 1850)
49.307	1212	<i>Rhyacionia pinivorana</i>	(Lienig & Zeller, 1846)
49.309	1285	<i>Dichrorampha plumbana</i>	(Scopoli, 1763)
49.311	1287	<i>Dichrorampha aeratana</i>	(Pierce & Metcalfe, 1915)
49.313	1279	<i>Dichrorampha acuminatana</i>	(Lienig & Zeller, 1846)
49.315	1281	<i>Dichrorampha simpliciana</i>	(Haworth, 1811)
49.318	1284	<i>Dichrorampha vancouverana</i>	(McDunnough, 1935)
49.319	1275	<i>Dichrorampha flavidorsana</i>	(Knaggs, 1867)
49.320	1274	<i>Dichrorampha alpinana</i>	(Treitschke, 1830)
49.321	1273	<i>Dichrorampha petiverella</i>	(Linnaeus, 1758)
49.322	1276	<i>Dichrorampha plumbagana</i>	(Treitschke, 1830)
49.324	1257	<i>Cydia nigricana</i>	(Fabricius, 1794)
49.325	1255	<i>Cydia ulicetana</i>	(Haworth, 1811)
49.327	1220	<i>Cydia microgrammana</i>	(Guenée, 1845)
49.330	1269	<i>Cydia conicolana</i>	(Heylaerts, 1874)
49.332	1268	<i>Cydia coniferana</i>	(Saxesen, 1840)
49.334	1267	<i>Cydia cosmophorana</i>	(Treitschke, 1835)
49.338	1261	<i>Cydia pomonella</i>	(Linnaeus, 1758)
49.339	1256	<i>Cydia servillana</i>	(Duponchel, 1836)
49.341	1260	<i>Cydia splendana</i>	(Hübner, [1799])
49.342	1259	<i>Cydia fagiglandana</i>	(Zeller, 1841)
49.345	1219	<i>Lathronympha strigana</i>	(Fabricius, 1775)
49.347	1241	<i>Grapholita compositella</i>	(Fabricius, 1775)
49.349	1242	<i>Grapholita internana</i>	(Guenée, 1845)
49.351	1252	<i>Grapholita lunulana</i>	([Denis & Schiffermüller], 1775)
49.354	1251	<i>Grapholita jungiella</i>	(Clerck, 1759)

49.358	1246	<i>Grapholita tenebrosana</i>		Duponchel, [1843]
49.359	1245	<i>Grapholita janthinana</i>		(Duponchel, 1835)
49.360	1223	<i>Pammene splendidulana</i>		(Guenée, 1845)
49.362	1227	<i>Pammene giganteana</i>		(Peyerimhoff, 1863)
49.363	1228	<i>Pammene argyrana</i>		(Hübner, [1799])
49.366	1225	<i>Pammene obscurana</i>		(Stephens, 1834)
49.367	1236	<i>Pammene fasciana</i>		(Linnaeus, 1761)
49.368	1236a	<i>Pammene herrichiana</i>		(Heinemann, 1854)
49.371	1239	<i>Pammene rhediella</i>		(Clerck, 1759)
49.372	1232	<i>Pammene populana</i>		(Fabricius, 1787)
49.373	1231	<i>Pammene spiniana</i>		(Duponchel, [1843])
49.375	1234	<i>Pammene regiana</i>		(Zeller, 1849)
49.376	1233	<i>Pammene aurita</i>		(Razowski, 1991)
49.379	1272	<i>Pammene aurana</i>		(Fabricius, 1775)
49.381	1221	<i>Strophedra weirana</i>		(Douglas, 1850)
49.382	1222	<i>Strophedra nitidana</i>		(Fabricius, 1794)
<b>Cossidae</b>				
Cossinae				
50.001	162	<i>Cossus cossus</i>	<b>Goat Moth</b>	(Linnaeus, 1758)
Zeuzerinae				
50.002	161	<i>Zeuzera pyrina</i>	<b>Leopard Moth</b>	(Linnaeus, 1761)
<b>Sesiidae</b>				
Sesiinae				
52.002	370	<i>Sesia apiformis</i>	<b>Hornet Moth</b>	(Clerck, 1759)
52.003	371	<i>Sesia bembeciformis</i>	<b>Lunar Hornet Moth</b>	(Hübner, [1806])
52.005	376	<i>Synanthedon scoliaeformis</i>	<b>Welsh Clearwing</b>	(Borkhausen, 1789)
52.007	381	<i>Synanthedon culciformis</i>	<b>Large Red-belted Clearwing</b>	(Linnaeus, 1758)
52.008	380	<i>Synanthedon formicaeformis</i>	<b>Red-tipped Clearwing</b>	(Esper, 1782)
52.011	379	<i>Synanthedon myopaeformis</i>	<b>Red-belted Clearwing</b>	(Borkhausen, 1789)
52.012	374	<i>Synanthedon vespiformis</i>	<b>Yellow-legged Clearwing</b>	(Linnaeus, 1761)
52.013	373	<i>Synanthedon tipuliformis</i>	<b>Currant Clearwing</b>	(Clerck, 1759)
52.014	382	<i>Bembecia ichneumoniformis</i>	<b>Six-belted Clearwing</b>	([Denis & Schiffermüller], 1775)
<b>Zygaenidae</b>				
Procridinae				
54.002	163	<i>Adscita statices</i>	<b>Forester</b>	(Linnaeus, 1758)
Zygaeninae				
54.008	169	<i>Zygaena filipendulae</i>	<b>Six-spot Burnet</b>	(Linnaeus, 1758)
54.009	171	<i>Zygaena lonicerae</i>	<b>Narrow-bordered Five-spot Burnet</b>	(Scheven, 1777)
54.010	170	<i>Zygaena trifolii</i>	<b>Five-spot Burnet</b>	(Esper, 1783)
<b>Pyralidae</b>				
Galleriinae				
62.001	1428	<i>Aphomia sociella</i>	<b>Bee Moth</b>	(Linnaeus, 1758)
62.002	1429	<i>Aphomia zelleri</i>		(Joannis, 1932)
62.005	1426	<i>Achroia grisella</i>	<b>Lesser Wax Moth</b>	(Fabricius, 1794)
62.006	1425	<i>Galleria mellonella</i>	<b>Wax Moth</b>	(Linnaeus, 1758)
Phycitinae				
62.007	1433	<i>Cryptoblabes bistriga</i>		(Haworth, 1811)
62.0071	1434	<i>Cryptoblabes gnidiella</i>		(Millière, 1867)
62.011	1450	<i>Ortholepis betulae</i>		(Goeze, 1778)
62.012	1451	<i>Matilella fusca</i>		(Haworth, 1811)
62.025	1454b	<i>Dioryctria sylvestrella</i>		(Ratzeburg, 1840)
62.026	1454a	<i>Dioryctria schuetzeella</i>		(Fuchs, 1899)
62.027	1455	<i>Dioryctria simplicella</i>		(Heinemann, 1863)
62.028	1454	<i>Dioryctria abietella</i>		([Denis & Schiffermüller], 1775)
62.029	1452	<i>Phycita roborella</i>		([Denis & Schiffermüller], 1775)
62.034	1436	<i>Acrobasis repandana</i>		(Fabricius, 1798)
62.035	1439	<i>Acrobasis advenella</i>		(Zincken, 1818)
62.036	1438	<i>Acrobasis suavella</i>		(Zincken, 1818)
62.037	1440	<i>Acrobasis marmorea</i>		(Haworth, 1811)
62.038	1437	<i>Acrobasis consociella</i>		(Hübner, [1813])
62.042	1458	<i>Myelois circumvoluta</i>	<b>Thistle Ermine</b>	(Fourcroy, 1785)
62.048	1470	<i>Euzophera pinguis</i>		(Haworth, 1811)
62.050	1469	<i>Euzophera cinerosella</i>		(Zeller, 1839)
62.053	1467	<i>Ancylosis oblitella</i>		(Zeller, 1848)



62.054	1481	<i>Homoeosoma sinuella</i>		(Fabricius, 1794)
62.055	1480	<i>Homoeosoma nebulella</i>		([Denis & Schiffermüller], 1775)
62.056	1482	<i>Homoeosoma nimbella</i>		(Duponchel, 1837)
62.057	1485	<i>Phycitodes maritima</i>		(Tengström, 1848)
62.058	1483	<i>Phycitodes binaevella</i>		(Hübner, [1813])
62.059	1484	<i>Phycitodes saxicola</i>		(Vaughan, 1870)
62.062	1479	<i>Plodia interpunctella</i>	<b>Indian Meal Moth</b>	(Hübner, [1813])
62.063	1475	<i>Ephestia kuehniella</i>	<b>Mediterranean Flour Moth</b>	(Zeller, 1879)
62.064	1473	<i>Ephestia elutella</i>	<b>Cacao Moth</b>	(Hübner, 1796)
62.068	1478	<i>Cadra calidella</i>	<b>Dried Fruit Moth</b>	(Guenée, 1845)
62.069	1432	<i>Anerastia lotella</i>		(Hübner, [1813])
<b>Pyralinae</b>				
62.072	1417	<i>Pyralis farinalis</i>	<b>Meal Moth</b>	(Linnaeus, 1758)
62.074	1421	<i>Aglossa pinguinalis</i>	<b>Large Tabby</b>	(Linnaeus, 1758)
62.075	1413	<i>Hypsopygia costalis</i>	<b>Gold Triangle</b>	(Fabricius, 1775)
62.076	1415	<i>Hypsopygia glaucinalis</i>		(Linnaeus, 1758)
62.077	1424	<i>Endotricha flammealis</i>		([Denis & Schiffermüller], 1775)
<b>Crambidae</b>				
<b>Pyraustinae</b>				
63.002	1368	<i>Loxostege sticticalis</i>		(Linnaeus, 1761)
63.005	1365	<i>Pyrausta despicata</i>		(Scopoli, 1763)
63.006	1361	<i>Pyrausta aurata</i>		(Scopoli, 1763)
63.007	1362	<i>Pyrausta purpuralis</i>		(Linnaeus, 1758)
63.014	1370	<i>Sitochroa palealis</i>		([Denis & Schiffermüller], 1775)
63.015	1371	<i>Sitochroa verticalis</i>		(Linnaeus, 1758)
63.017	1377	<i>Anania lancealis</i>		([Denis & Schiffermüller], 1775)
63.018	1378	<i>Anania coronata</i>		(Hufnagel, 1767)
63.020	1380	<i>Anania perlucidalis</i>		(Hübner, [1809])
63.022	1385	<i>Anania crocealis</i>		(Hübner, 1796)
63.024	1381	<i>Anania funebris</i>		(Ström, 1768)
63.025	1376	<i>Anania hortulata</i>	<b>Small Magpie</b>	(Linnaeus, 1758)
<b>Spilomelinae</b>				
63.031	1395	<i>Udea ferrugalis</i>	<b>Rusty Dot Pearl</b>	(Hübner, 1796)
63.033	1388	<i>Udea lutealis</i>		(Hübner, [1809])
63.034	1390	<i>Udea prunalis</i>		([Denis & Schiffermüller], 1775)
63.036	1391	<i>Udea decrepitalis</i>		(Herrich-Schäffer, 1848)
63.037	1392	<i>Udea olivalis</i>		([Denis & Schiffermüller], 1775)
63.038	1405	<i>Pleuroptya ruralis</i>	<b>Mother of Pearl</b>	(Scopoli, 1763)
63.040	1397	<i>Mecyna asinalis</i>		(Hübner, [1819])
63.046	1403a	<i>Duponchelia fovealis</i>		(Zeller, 1847)
63.047	1404	<i>Spoladea recurvalis</i>		(Fabricius, 1775)
63.048	1408	<i>Palpita vitrealis</i>		(Rossi, 1794)
63.051	1400	<i>Antigastra catalaunalis</i>		(Duponchel, 1833)
63.052	1398	<i>Nomophila noctuella</i>	<b>Rush Veneer</b>	([Denis & Schiffermüller], 1775)
63.054	1409a	<i>Cydalima perspectalis</i>	<b>Box-tree Moth</b>	(Walker, 1859)
<b>Glaphyriinae</b>				
63.057	1356	<i>Evergestis forficalis</i>	<b>Garden Pebble</b>	(Linnaeus, 1758)
63.060	1358	<i>Evergestis pallidata</i>		(Hufnagel, 1767)
<b>Scopariinae</b>				
63.062	1332	<i>Scoparia subfusca</i>		(Haworth, 1811)
63.063	1334a	<i>Scoparia basistrigalis</i>		(Knaggs, 1866)
63.064	1334	<i>Scoparia ambigualis</i>		(Treitschke, 1829)
63.066	1333	<i>Scoparia pyralella</i>		([Denis & Schiffermüller], 1775)
63.067	1338	<i>Eudonia lacustrata</i>		(Panzer, 1804)
63.068	1339	<i>Eudonia murana</i>		(Curtis, 1827)
63.069	1342	<i>Eudonia angustea</i>		(Curtis, 1827)
63.071	1341	<i>Eudonia lineola</i>		(Curtis, 1827)
63.072	1343	<i>Eudonia delunella</i>		(Stainton, 1849)
63.073	1340	<i>Eudonia truncicolella</i>		(Stainton, 1849)
63.074	1344	<i>Eudonia mercurella</i>		(Linnaeus, 1758)
63.075	1336	<i>Eudonia pallida</i>		(Curtis, 1827)
<b>Crambinae</b>				
63.076	1289	<i>Euchromius ocella</i>		(Haworth, 1811)
63.077	1290	<i>Chilo phragmitella</i>		(Hübner, [1810])
63.079	1292	<i>Calamotropha paludella</i>		(Hübner, [1824])
63.080	1293	<i>Chrysoteuchia culmella</i>		(Linnaeus, 1758)
63.081	1294	<i>Crambus pascuella</i>		(Linnaeus, 1758)
63.082	1296	<i>Crambus silvella</i>		(Hübner, [1813])

63.083	1297	<i>Crambus uliginosellus</i>		(Zeller, 1850)
63.085	1300	<i>Crambus pratella</i>		(Linnaeus, 1758)
63.086	1301	<i>Crambus lathonellus</i>		(Zincken, 1817)
63.087	1299	<i>Crambus hamella</i>		(Thunberg, 1788)
63.088	1302	<i>Crambus perlella</i>		(Scopoli, 1763)
63.089	1305	<i>Agriphila tristella</i>		([Denis & Schiffermüller], 1775)
63.090	1306	<i>Agriphila inquinatella</i>		([Denis & Schiffermüller], 1775)
63.091	1307	<i>Agriphila latistria</i>		(Haworth, 1811)
63.092	1303	<i>Agriphila selasella</i>		(Hübner, [1813])
63.093	1304	<i>Agriphila straminella</i>		([Denis & Schiffermüller], 1775)
63.095	1309	<i>Agriphila geniculea</i>		(Haworth, 1811)
63.099	1313	<i>Catoptria pinella</i>		(Linnaeus, 1758)
63.100	1314	<i>Catoptria margaritella</i>		([Denis & Schiffermüller], 1775)
63.102	1316	<i>Catoptria falsella</i>		([Denis & Schiffermüller], 1775)
63.106	1320	<i>Chrysocrambus craterella</i>		(Scopoli, 1763)
63.107	1321	<i>Thisanotia chrysonuchella</i>		(Scopoli, 1763)
63.109	1323	<i>Pediasia contaminella</i>		(Hübner, 1796)
63.112	1325	<i>Platytes alpinella</i>		(Hübner, 1813)
<b>Acentropinae</b>				
63.114	1345	<i>Elophila nymphaeata</i>	<b>Brown China-mark</b>	(Linnaeus, 1758)
63.115	1331	<i>Acentria ephemerella</i>	<b>Water Veneer</b>	([Denis & Schiffermüller], 1775)
63.116	1354	<i>Cataclysta lemnata</i>	<b>Small China-mark</b>	(Linnaeus, 1758)
63.117	1348	<i>Parapoynx stratiotata</i>	<b>Ringed China-mark</b>	(Linnaeus, 1758)
63.118	1350	<i>Nymphula nitidulata</i>	<b>Beautiful China-mark</b>	(Hufnagel, 1767)
<b>Schoenobiinae</b>				
63.120	1328	<i>Schoenobius gigantella</i>		([Denis & Schiffermüller], 1775)
63.121	1329	<i>Donacaula forficella</i>		(Thunberg, 1794)
63.122	1330	<i>Donacaula mucronella</i>		([Denis & Schiffermüller], 1775)
<b>Drepanidae</b>				
<b>Drepaninae</b>				
65.001	1645	<i>Falcaria lacertinaria</i>	<b>Scalloped Hook-tip</b>	(Linnaeus, 1758)
65.002	1646	<i>Watsonalla binaria</i>	<b>Oak Hook-tip</b>	(Hufnagel, 1767)
65.003	1647	<i>Watsonalla cultraria</i>	<b>Barred Hook-tip</b>	(Fabricius, 1775)
65.005	1648	<i>Drepana falcataria</i>	<b>Pebble Hook-tip</b>	(Linnaeus, 1758)
65.007	1651	<i>Cilix glaucata</i>	<b>Chinese Character</b>	(Scopoli, 1763)
<b>Thyatirinae</b>				
65.008	1652	<i>Thyatira batis</i>	<b>Peach Blossom</b>	(Linnaeus, 1758)
65.009	1653	<i>Habrosyne pyritoides</i>	<b>Buff Arches</b>	(Hufnagel, 1766)
65.010	1654	<i>Tethea ocularis</i>	<b>Figure of Eighty</b>	(Linnaeus, 1767)
65.011	1655	<i>Tethea or</i>	<b>Poplar Lutestring</b>	([Denis & Schiffermüller], 1775)
65.013	1657	<i>Ochropacha duplaris</i>	<b>Common Lutestring</b>	(Linnaeus, 1761)
65.014	1658	<i>Cymatophorima diluta</i>	<b>Oak Lutestring</b>	([Denis & Schiffermüller], 1775)
65.015	1660	<i>Polyploca ridens</i>	<b>Frosted Green</b>	(Fabricius, 1787)
65.016	1659	<i>Achlya flavicornis</i>	<b>Yellow Horned</b>	(Linnaeus, 1758)
<b>Lasiocampidae</b>				
<b>Poecilocampinae</b>				
66.001	1631	<i>Poecilocampa populi</i>	<b>December Moth</b>	(Linnaeus, 1758)
66.002	1632	<i>Trichiura crataegi</i>	<b>Pale Eggar</b>	(Linnaeus, 1758)
<b>Malacosomatinae</b>				
66.003	1634	<i>Malacosoma neustria</i>	<b>Lackey</b>	(Linnaeus, 1758)
<b>Lasiocampinae</b>				
66.005	1633	<i>Eriogaster lanestrus</i>	<b>Small Eggar</b>	(Linnaeus, 1758)
66.006	1636	<i>Lasiocampa trifolii</i>	<b>Grass Eggar</b>	([Denis & Schiffermüller], 1775)
66.007	1637	<i>Lasiocampa quercus</i>	<b>Oak Eggar</b>	(Linnaeus, 1758)
66.008	1638	<i>Macrothylacia rubi</i>	<b>Fox Moth</b>	(Linnaeus, 1758)
<b>Pinarinae</b>				
66.010	1640	<i>Euthrix potatitia</i>	<b>Drinker</b>	(Linnaeus, 1758)
66.012	1642	<i>Gastropacha quercifolia</i>	<b>Lappet</b>	(Linnaeus, 1758)
<b>Saturniidae</b>				
<b>Saturniinae</b>				
68.001	1643	<i>Saturnia pavonia</i>	<b>Emperor Moth</b>	(Linnaeus, 1758)

**Sphingidae**

## Smerinthinae

69.001	1979	<i>Mimas tiliae</i>	<b>Lime Hawk-moth</b>	(Linnaeus, 1758)
69.002	1980	<i>Smerinthus ocellata</i>	<b>Eyed Hawk-moth</b>	(Linnaeus, 1758)
69.003	1981	<i>Laothoe populi</i>	<b>Poplar Hawk-moth</b>	(Linnaeus, 1758)

## Sphinginae

69.004	1972	<i>Agrius convolvuli</i>	<b>Convolvulus Hawkmoth</b>	(Linnaeus, 1758)
69.005	1973	<i>Acherontia atropos</i>	<b>Death's-head Hawkmoth</b>	(Linnaeus, 1758)
69.006	1976	<i>Sphinx ligustri</i>	<b>Privet Hawk-moth</b>	(Linnaeus, 1758)
69.007	1978	<i>Sphinx pinastri</i>	<b>Pine Hawk-moth</b>	(Linnaeus, 1758)

## Macroglossinae

69.009	1983	<i>Hemaris fuciformis</i>	<b>Broad-bordered Bee Hawkmoth</b>	(Linnaeus, 1758)
69.010	1984	<i>Macroglossum stellatarum</i>	<b>Hummingbird Hawk-moth</b>	(Linnaeus, 1758)
69.011	1985	<i>Daphnis nerii</i>	<b>Oleander Hawkmoth</b>	(Linnaeus, 1758)
69.014	1987	<i>Hyles galii</i>	<b>Bedstraw Hawk-moth</b>	(Rottemburg, 1775)
69.016	1991	<i>Deilephila elpenor</i>	<b>Elephant Hawk-moth</b>	(Linnaeus, 1758)
69.017	1992	<i>Deilephila porcellus</i>	<b>Small Elephant Hawk-moth</b>	(Linnaeus, 1758)
69.018	1993	<i>Hippotion celerio</i>	<b>Silver-striped Hawkmoth</b>	(Linnaeus, 1758)

**Geometridae**

## Sterrhinae

70.004	1699	<i>Idaea rusticata</i>	<b>Least Carpet</b>	([Denis & Schiffermüller], 1775)
70.006	1705	<i>Idaea fuscovenosa</i>	<b>Dwarf Cream Wave</b>	(Goeze, 1781)
70.008	1707	<i>Idaea seriata</i>	<b>Small Dusty Wave</b>	(Schrank, 1802)
70.009	1709	<i>Idaea subsericeata</i>	<b>Satin Wave</b>	(Haworth, 1809)
70.011	1708	<i>Idaea dimidiata</i>	<b>Single-dotted Wave</b>	(Hufnagel, 1767)
70.012	1711	<i>Idaea trigeminata</i>	<b>Treble Brown Spot</b>	(Haworth, 1809)
70.013	1702	<i>Idaea biselata</i>	<b>Small Fan-footed Wave</b>	(Hufnagel, 1767)
70.015	1712	<i>Idaea emarginata</i>	<b>Small Scallop</b>	(Linnaeus, 1758)
70.016	1713	<i>Idaea aversata</i>	<b>Riband Wave</b>	(Linnaeus, 1758)
70.018	1715	<i>Idaea straminata</i>	<b>Plain Wave</b>	(Borkhausen, 1794)
70.024	1690	<i>Scopula imitaria</i>	<b>Small Blood-vein</b>	(Hübner, [1799])
70.025	1692	<i>Scopula immutata</i>	<b>Lesser Cream Wave</b>	(Linnaeus, 1758)
70.026	1694	<i>Scopula ternata</i>	<b>Smoky Wave</b>	(Schrank, 1802)
70.027	1693	<i>Scopula floslactata</i>	<b>Cream Wave</b>	(Haworth, 1809)
70.029	1682	<i>Timandra comae</i>	<b>Blood-vein</b>	(Schmidt, 1931)
70.031	1676	<i>Cyclophora annularia</i>	<b>Mocha</b>	(Fabricius, 1775)
70.032	1677	<i>Cyclophora albipunctata</i>	<b>Birch Mocha</b>	(Hufnagel, 1767)
70.035	1679	<i>Cyclophora porata</i>	<b>False Mocha</b>	(Linnaeus, 1767)
70.036	1680	<i>Cyclophora punctaria</i>	<b>Maiden's Blush</b>	(Linnaeus, 1758)
70.037	1681	<i>Cyclophora linearia</i>	<b>Clay Triple-lines</b>	(Hübner, [1799])
70.038	1716	<i>Rhodometra sacraria</i>	<b>Vestal</b>	(Linnaeus, 1767)

## Larentiinae

70.040	1733	<i>Scotopteryx mucronata</i>	<b>Lead Belle</b>	(Heydemann, 1925)
70.041	1734	<i>Scotopteryx luridata</i>	<b>July Belle</b>	(Fabricius, 1775)
70.043	1731	<i>Scotopteryx bipunctaria</i>	<b>Chalk Carpet</b>	(Prout, 1937)
70.045	1732	<i>Scotopteryx chenopodiata</i>	<b>Shaded Broad-bar</b>	(Linnaeus, 1758)
70.046	1719	<i>Orthonama vittata</i>	<b>Oblique Carpet</b>	(Borkhausen, 1794)
70.047	1720	<i>Nycterosea obstipata</i>	<b>Gem</b>	(Fabricius, 1794)
70.049	1728	<i>Xanthorhoe fluctuata</i>	<b>Garden Carpet</b>	(Linnaeus, 1758)
70.050	1721	<i>Xanthorhoe biriviata</i>	<b>Balsam Carpet</b>	(Borkhausen, 1794)
70.051	1724	<i>Xanthorhoe spadicearia</i>	<b>Red Twin-spot Carpet</b>	([Denis & Schiffermüller], 1775)
70.052	1725	<i>Xanthorhoe ferrugata</i>	<b>Dark-barred Twin-spot Carpet</b>	(Clerck, 1759)
70.053	1722	<i>Xanthorhoe designata</i>	<b>Flame Carpet</b>	(Hufnagel, 1767)
70.054	1727	<i>Xanthorhoe montanata</i>	<b>Silver-ground Carpet</b>	([Denis & Schiffermüller], 1775)
70.055	1726	<i>Xanthorhoe quadrifasiata</i>	<b>Large Twin-spot Carpet</b>	(Clerck, 1759)
70.056	1736	<i>Catarhoe cuculata</i>	<b>Royal Mantle</b>	(Hufnagel, 1767)
70.057	1735	<i>Catarhoe rubidata</i>	<b>Ruddy Carpet</b>	([Denis & Schiffermüller], 1775)
70.059	1742	<i>Campptogramma bilineata</i>	<b>Yellow Shell</b>	(Linnaeus, 1758)
70.060	1737	<i>Epirrhoe tristata</i>	<b>Small Argent and Sable</b>	(Linnaeus, 1758)
70.061	1738	<i>Epirrhoe alternata</i>	<b>Common Carpet</b>	(Müller, 1764)
70.062	1739	<i>Epirrhoe rivata</i>	<b>Wood Carpet</b>	(Hübner, [1813])
70.063	1740	<i>Epirrhoe galiata</i>	<b>Galium Carpet</b>	([Denis & Schiffermüller], 1775)
70.066	1746	<i>Earophila badiata</i>	<b>Shoulder-stripe</b>	([Denis & Schiffermüller], 1775)
70.067	1747	<i>Anticlea derivata</i>	<b>Streamer</b>	([Denis & Schiffermüller], 1775)
70.068	1748	<i>Mesoleuca albicillata</i>	<b>Beautiful Carpet</b>	(Linnaeus, 1758)
70.069	1749	<i>Pelurga comitata</i>	<b>Dark Spinach</b>	(Linnaeus, 1758)
70.070	1745	<i>Larentia clavaria</i>	<b>Mallow</b>	(Haworth, 1809)
70.074	1777	<i>Hydriomena furcata</i>	<b>July Highflyer</b>	(Thunberg, 1784)
70.075	1778	<i>Hydriomena impluviata</i>	<b>May Highflyer</b>	([Denis & Schiffermüller], 1775)
70.076	1779	<i>Hydriomena ruberata</i>	<b>Ruddy Highflyer</b>	(Freyer, [1831])

70.077	1767	<i>Pennithera firmata</i>	<b>Pine Carpet</b>	(Hübner, [1822])
70.079	1769	<i>Thera britannica</i>	<b>Spruce Carpet</b>	(Turner, 1925)
70.081	1768	<i>Thera obeliscata</i>	<b>Grey Pine Carpet</b>	(Hübner, [1787])
70.082	1771	<i>Thera juniperata</i>	<b>Juniper Carpet</b>	(Linnaeus, 1758)
70.084	1766	<i>Plemyria rubiginata</i>	<b>Blue-bordered Carpet</b>	([Denis & Schiffermüller], 1775)
70.085	1765	<i>Cidaria fulvata</i>	<b>Barred Yellow</b>	(Forster, 1771)
70.086	1773	<i>Electrophaes corylata</i>	<b>Broken-barred Carpet</b>	(Thunberg, 1792)
70.087	1752	<i>Cosmorhoe ocellata</i>	<b>Purple Bar</b>	(Linnaeus, 1758)
70.089	1754	<i>Eulithis prunata</i>	<b>Phoenix</b>	(Linnaeus, 1758)
70.090	1755	<i>Eulithis testata</i>	<b>Chevron</b>	(Linnaeus, 1761)
70.091	1756	<i>Eulithis populata</i>	<b>Northern Spinach</b>	(Linnaeus, 1758)
70.092	1757	<i>Eulithis mellinata</i>	<b>Spinach</b>	(Fabricius, 1787)
70.093	1758	<i>Gandaritis pyraliata</i>	<b>Barred Straw</b>	([Denis & Schiffermüller], 1775)
70.094	1759	<i>Eliptopera silaceata</i>	<b>Small Phoenix</b>	([Denis & Schiffermüller], 1775)
70.095	1760	<i>Chloroclysta siterata</i>	<b>Red-green Carpet</b>	(Hufnagel, 1767)
70.096	1761	<i>Chloroclysta miata</i>	<b>Autumn Green Carpet</b>	(Linnaeus, 1758)
70.097	1764	<i>Dysstroma truncata</i>	<b>Common Marbled Carpet</b>	(Hufnagel, 1767)
70.098	1762	<i>Dysstroma citrata</i>	<b>Dark Marbled Carpet</b>	(Linnaeus, 1761)
70.100	1776	<i>Colostygia pectinataria</i>	<b>Green Carpet</b>	(Knoch, 1781)
70.101	1775	<i>Colostygia multistrigaria</i>	<b>Mottled Grey</b>	(Haworth, 1809)
70.103	1750	<i>Lampropteryx suffumata</i>	<b>Water Carpet</b>	([Denis & Schiffermüller], 1775)
70.104	1751	<i>Lampropteryx otregiata</i>	<b>Devon Carpet</b>	(Metcalf, 1917)
70.105	1800	<i>Operophtera fagata</i>	<b>Northern Winter Moth</b>	(Scharfenberg, 1805)
70.106	1799	<i>Operophtera brumata</i>	<b>Winter Moth</b>	(Linnaeus, 1758)
70.107	1795	<i>Epirrita dilutata</i>	<b>November Moth</b>	([Denis & Schiffermüller], 1775)
70.108	1796	<i>Epirrita christyi</i>	<b>Pale November Moth</b>	(Allen, 1906)
70.109	1797	<i>Epirrita autumnata</i>	<b>Autumnal Moth</b>	(Borkhausen, 1794)
70.110	1798	<i>Epirrita filigrammaria</i>	<b>Small Autumnal Moth</b>	(Herrich-Schäffer, 1846)
70.111	1875	<i>Asthenia albulata</i>	<b>Small White Wave</b>	(Hufnagel, 1767)
70.112	1874	<i>Euchoeca nebulata</i>	<b>Dingy Shell</b>	(Scopoli, 1763)
70.113	1877	<i>Hydrelia sylvata</i>	<b>Waved Carpet</b>	([Denis & Schiffermüller], 1775)
70.114	1876	<i>Hydrelia flammeolaria</i>	<b>Small Yellow Wave</b>	(Hufnagel, 1767)
70.115	1873	<i>Venusia cambrica</i>	<b>Welsh Wave</b>	(Curtis, 1839)
70.116	1872	<i>Venusia blomeri</i>	<b>Blomer's Rivulet</b>	(Curtis, 1832)
70.118	1791	<i>Philereme vetulata</i>	<b>Brown Scallop</b>	([Denis & Schiffermüller], 1775)
70.119	1792	<i>Philereme transversata</i>	<b>Dark Umber</b>	(Hufnagel, 1767)
70.120	1787	<i>Rheumaptera hastata</i>	<b>Argent and Sable</b>	(Linnaeus, 1758)
70.121	1789	<i>Hydria undulata</i>	<b>Scallop Shell</b>	(Linnaeus, 1758)
70.122	1788	<i>Hydria cervicalis</i>	<b>Scarce Tissue</b>	(Scopoli, 1763)
70.123	1790	<i>Triphosa dubitata</i>	<b>Tissue</b>	(Linnaeus, 1758)
70.126	1781	<i>Horisme vitalbata</i>	<b>Small Waved Umber</b>	([Denis & Schiffermüller], 1775)
70.127	1782	<i>Horisme tersata</i>	<b>Fern</b>	([Denis & Schiffermüller], 1775)
70.129	1863	<i>Anticollix sparsata</i>	<b>Dentated Pug</b>	(Treitschke, 1828)
70.130	1870	<i>Odezia atrata</i>	<b>Chimney Sweeper</b>	(Linnaeus, 1758)
70.131	1809	<i>Mesotype didymata</i>	<b>Twin-spot Carpet</b>	(Linnaeus, 1758)
70.132	1802	<i>Perizoma affinitata</i>	<b>Rivulet</b>	(Stephens, 1831)
70.133	1803	<i>Perizoma alchemillata</i>	<b>Small Rivulet</b>	(Linnaeus, 1758)
70.134	1804	<i>Perizoma bifaciata</i>	<b>Barred Rivulet</b>	(Haworth, 1809)
70.137	1807	<i>Perizoma albulata</i>	<b>Grass Rivulet</b>	([Denis & Schiffermüller], 1775)
70.138	1808	<i>Perizoma flavofasciata</i>	<b>Sandy Carpet</b>	(Thunberg, 1792)
70.140	1810	<i>Gagitodes sagittata</i>	<b>Marsh Carpet</b>	(Fabricius, 1787)
70.141	1862	<i>Gymnoscelis rufifasciata</i>	<b>Double-striped Pug</b>	(Haworth, 1809)
70.142	1858	<i>Chloroclystis v-ata</i>	<b>V-Pug</b>	(Haworth, 1809)
70.143	1859	<i>Pasiphila chloerata</i>	<b>Sloe Pug</b>	(Mabille, 1870)
70.144	1860	<i>Pasiphila rectangulata</i>	<b>Green Pug</b>	(Linnaeus, 1758)
70.146	1813	<i>Eupithecia haworthiata</i>	<b>Haworth's Pug</b>	(Doubleday, 1856)
70.147	1811	<i>Eupithecia tenuiata</i>	<b>Slender Pug</b>	(Hübner, [1813])
70.148	1812	<i>Eupithecia inturbata</i>	<b>Maple Pug</b>	(Hübner, [1817])
70.150	1816	<i>Eupithecia linariata</i>	<b>Toadflax Pug</b>	([Denis & Schiffermüller], 1775)
70.151	1817	<i>Eupithecia pulchellata</i>	<b>Foxglove Pug</b>	(Stephens, 1831)
70.154	1822	<i>Eupithecia pygmaeata</i>	<b>Marsh Pug</b>	(Hübner, [1799])
70.155	1823	<i>Eupithecia venosata</i>	<b>Netted Pug</b>	(Fabricius, 1787)
70.156	1852	<i>Eupithecia abbreviata</i>	<b>Brindled Pug</b>	(Stephens, 1831)
70.157	1853	<i>Eupithecia dodoneata</i>	<b>Oak-tree Pug</b>	(Guenée, [1858])
70.158	1854	<i>Eupithecia pusillata</i>	<b>Juniper Pug</b>	([Denis & Schiffermüller], 1775)
70.160	1835	<i>Eupithecia tripunctaria</i>	<b>White-spotted Pug</b>	(Herrich-Schäffer, 1852)
70.161	1851	<i>Eupithecia virgaureata</i>	<b>Golden-rod Pug</b>	(Doubleday, 1861)
70.162	1857	<i>Eupithecia tantillaria</i>	<b>Dwarf Pug</b>	(Boisduval, 1840)
70.163	1856	<i>Eupithecia lariciata</i>	<b>Larch Pug</b>	(Freyer, 1841)
70.164	1824	<i>Eupithecia egenaria</i>	<b>Pauper Pug</b>	(Herrich-Schäffer, 1848)
70.165	1845	<i>Eupithecia pimpinellata</i>	<b>Pimpinel Pug</b>	(Hübner, [1813])
70.166	1842	<i>Eupithecia simplicata</i>	<b>Plain Pug</b>	(Haworth, 1809)
70.168	1846	<i>Eupithecia nanata</i>	<b>Narrow-winged Pug</b>	(Hübner, [1813])
70.171	1844	<i>Eupithecia indigata</i>	<b>Ochreous Pug</b>	(Hübner, [1813])
70.173	1825	<i>Eupithecia centaureata</i>	<b>Lime-speck Pug</b>	([Denis & Schiffermüller], 1775)

70.174	1820	<i>Eupithecia insigniata</i>	<b>Pinion-spotted Pug</b>	(Hübner, 1790)
70.175	1826	<i>Eupithecia trisignaria</i>	<b>Triple-spotted Pug</b>	(Herrich-Schäffer, 1848)
70.176	1827	<i>Eupithecia intricata</i>	<b>Freyer's Pug</b>	(Zetterstedt, 1839)
70.177	1828	<i>Eupithecia satyrata</i>	<b>Satyr Pug</b>	(Hübner, [1813])
70.179	1830	<i>Eupithecia absinthiata</i>	<b>Wormwood Pug / Ling Pug</b>	(Clerck, 1759)
70.181	1821	<i>Eupithecia valerianata</i>	<b>Valerian Pug</b>	(Hübner, [1813])
70.182	1832	<i>Eupethicia assimiliata</i>	<b>Currant Pug</b>	(Doubleday, 1856)
70.183	1834	<i>Eupithecia vulgata</i>	<b>Common Pug</b>	(Haworth, 1809)
70.184	1819	<i>Eupithecia exigua</i>	<b>Mottled Pug</b>	(Hübner, [1813])
70.185	1836	<i>Eupithecia denotata</i>	<b>Campanula Pug</b>	(Hübner, [1813])
70.187	1838	<i>Eupithecia icterata</i>	<b>Tawny Speckled Pug</b>	(Villers, 1789)
70.188	1839	<i>Eupithecia succenturiata</i>	<b>Bordered Pug</b>	(Linnaeus, 1758)
70.189	1840	<i>Eupithecia subumbrata</i>	<b>Shaded Pug</b>	([Denis & Schiffermüller], 1775)
70.190	1837	<i>Eupithecia subfuscata</i>	<b>Grey Pug</b>	(Haworth, 1809)
70.192	1867	<i>Aplocera plagiata</i>	<b>Treble-bar</b>	(Linnaeus, 1758)
70.193	1868	<i>Aplocera efformata</i>	<b>Lesser Treble-bar</b>	(Guenée, [1858])
70.195	1864	<i>Chesias legatella</i>	<b>Streak</b>	([Denis & Schiffermüller], 1775)
70.196	1865	<i>Chesias rufata</i>	<b>Broom-tip</b>	(Fabricius, 1775)
70.198	1879	<i>Lobophora halterata</i>	<b>Seraphim</b>	(Hufnagel, 1767)
70.199	1882	<i>Pterapherapteryx sexualata</i>	<b>Small Seraphim</b>	(Retzius, 1783)
70.200	1883	<i>Acasis viretata</i>	<b>Yellow-barred Brindle</b>	(Hübner, [1799])
70.202	1881	<i>Trichopteryx carpinata</i>	<b>Early Tooth-striped</b>	(Borkhausen, 1794)

#### Archiearinae

70.203	1661	<i>Archiearis parthenias</i>	<b>Orange Underwing</b>	(Linnaeus, 1761)
70.204	1662	<i>Boudinotiana notha</i>	<b>Light Orange Underwing</b>	(Hübner, [1803])

#### Ennominae

70.205	1884	<i>Abraxas grossulariata</i>	<b>Magpie</b>	(Linnaeus, 1758)
70.206	1885	<i>Abraxas sylvata</i>	<b>Clouded Magpie</b>	(Scopoli, 1763)
70.207	1887	<i>Lomaspilis marginata</i>	<b>Clouded Border</b>	(Linnaeus, 1758)
70.208	1888	<i>Ligdia adustata</i>	<b>Scorched Carpet</b>	([Denis & Schiffermüller], 1775)
70.211	1889	<i>Macaria notata</i>	<b>Peacock Moth</b>	(Linnaeus, 1758)
70.214	1893	<i>Macaria liturata</i>	<b>Tawny-barred Angle</b>	(Clerck, 1759)
70.215	1897	<i>Macaria wauaria</i>	<b>V-Moth</b>	(Linnaeus, 1758)
70.217	1896	<i>Macaria brunneata</i>	<b>Rannoch Looper</b>	(Thunberg, 1784)
70.218	1894	<i>Chiasmia clathrata</i>	<b>Latticed Heath</b>	(Linnaeus, 1758)
70.222	1902	<i>Petrophora chlorosata</i>	<b>Brown Silver-line</b>	(Scopoli, 1763)
70.223	1903	<i>Plagodis pulveraria</i>	<b>Barred Umber</b>	(Linnaeus, 1758)
70.224	1904	<i>Plagodis dolabraria</i>	<b>Scorched Wing</b>	(Linnaeus, 1767)
70.226	1906	<i>Opisthograptis luteolata</i>	<b>Brimstone Moth</b>	(Linnaeus, 1758)
70.227	1907	<i>Epione repandaria</i>	<b>Bordered Beauty</b>	(Hufnagel, 1767)
70.229	1909	<i>Pseudopanthera macularia</i>	<b>Speckled Yellow</b>	(Linnaeus, 1758)
70.230	1924	<i>Angerona prunaria</i>	<b>Orange Moth</b>	(Linnaeus, 1758)
70.231	1910	<i>Apeira syringaria</i>	<b>Lilac Beauty</b>	(Linnaeus, 1758)
70.233	1912	<i>Ennomos quercinaria</i>	<b>August Thorn</b>	(Hufnagel, 1767)
70.234	1913	<i>Ennomos alniaria</i>	<b>Canary-shouldered Thorn</b>	(Linnaeus, 1758)
70.235	1914	<i>Ennomos fuscantaria</i>	<b>Dusky Thorn</b>	(Haworth, 1809)
70.236	1915	<i>Ennomos erosaria</i>	<b>September Thorn</b>	([Denis & Schiffermüller], 1775)
70.237	1917	<i>Selenia dentaria</i>	<b>Early Thorn</b>	(Fabricius, 1775)
70.238	1918	<i>Selenia lunularia</i>	<b>Lunar Thorn</b>	(Hübner, [1788])
70.239	1919	<i>Selenia tetralunaria</i>	<b>Purple Thorn</b>	(Hufnagel, 1767)
70.240	1920	<i>Odontopera bidentata</i>	<b>Scalloped Hazel</b>	(Clerck, 1759)
70.241	1921	<i>Crocallis elinguaris</i>	<b>Scalloped Oak</b>	(Linnaeus, 1758)
70.243	1922	<i>Ourapteryx sambucaria</i>	<b>Swallow-tailed Moth</b>	(Linnaeus, 1758)
70.244	1923	<i>Colotois pennaria</i>	<b>Feathered Thorn</b>	(Linnaeus, 1761)
70.245	1663	<i>Alsophila aescularia</i>	<b>March Moth</b>	([Denis & Schiffermüller], 1775)
70.246	1925	<i>Apocheima hispidaria</i>	<b>Small Brindled Beauty</b>	([Denis & Schiffermüller], 1775)
70.247	1926	<i>Phigalia pilosaria</i>	<b>Pale Brindled Beauty</b>	([Denis & Schiffermüller], 1775)
70.248	1927	<i>Lycia hirtaria</i>	<b>Brindled Beauty</b>	(Clerck, 1759)
70.251	1930	<i>Biston strataria</i>	<b>Oak Beauty</b>	(Hufnagel, 1767)
70.252	1931	<i>Biston betularia</i>	<b>Peppered Moth</b>	(Linnaeus, 1758)
70.253	1932	<i>Agriopsis leucophaearia</i>	<b>Spring Usher</b>	([Denis & Schiffermüller], 1775)
70.254	1933	<i>Agriopsis aurantaria</i>	<b>Scarce Umber</b>	(Hübner, [1799])
70.255	1934	<i>Agriopsis marginaria</i>	<b>Dotted Border</b>	(Fabricius, [1777])
70.256	1935	<i>Erannis defoliaria</i>	<b>Mottled Umber</b>	(Clerck, 1759)
70.257	1936	<i>Menophra abruptaria</i>	<b>Waved Umber</b>	(Thunberg, 1792)
70.258	1937	<i>Peribatodes rhomboidaria</i>	<b>Willow Beauty</b>	([Denis & Schiffermüller], 1775)
70.264	1940	<i>Deileptenia ribeata</i>	<b>Satin Beauty</b>	(Clerck, 1759)
70.265	1941	<i>Alcis repandata</i>	<b>Mottled Beauty</b>	(Linnaeus, 1758)
70.267	1943	<i>Hypomecis roboraria</i>	<b>Great Oak Beauty</b>	([Denis & Schiffermüller], 1775)
70.268	1944	<i>Hypomecis punctinalis</i>	<b>Pale Oak Beauty</b>	(Scopoli, 1763)
70.270	1947	<i>Ectropis crepuscularia</i>	<b>Engrailed</b>	([Denis & Schiffermüller], 1775)
70.274	1951	<i>Aethalura punctulata</i>	<b>Grey Birch</b>	([Denis & Schiffermüller], 1775)
70.275	1952	<i>Ematurga atomaria</i>	<b>Common Heath</b>	(Linnaeus, 1758)

70.276	1954	<i>Bupalus piniaria</i>	<b>Bordered White</b>	(Linnaeus, 1758)
70.277	1955	<i>Cabera pusaria</i>	<b>Common White Wave</b>	(Linnaeus, 1758)
70.278	1956	<i>Cabera exanthemata</i>	<b>Common Wave</b>	(Scopoli, 1763)
70.279	1957	<i>Lomographa bimaculata</i>	<b>White-pinion Spotted</b>	(Fabricius, 1775)
70.280	1958	<i>Lomographa temerata</i>	<b>Clouded Silver</b>	([Denis & Schiffermüller], 1775)
70.282	1960	<i>Theria primaria</i>	<b>Early Moth</b>	(Haworth, 1809)
70.283	1961	<i>Campaea margaritaria</i>	<b>Light Emerald</b>	(Linnaeus, 1761)
70.284	1962	<i>Hylaea fasciaria</i>	<b>Barred Red</b>	(Linnaeus, 1758)
70.287	1964	<i>Charissa obscurata</i>	<b>Annulet</b>	([Denis & Schiffermüller], 1775)
70.293	1967	<i>Aspitates gilvaria</i>	<b>Straw Belle</b>	([Denis & Schiffermüller], 1775)
70.294	1968	<i>Aspitates ochrearia</i>	<b>Yellow Belle</b>	(Rossi, 1794)
70.295	1970	<i>Perconia strigillaria</i>	<b>Grass Wave</b>	(Hübner, [1787])
<b>Geometrinae</b>				
70.297	1665	<i>Pseudoterpna pruinata</i>	<b>Grass Emerald</b>	(Walker, 1863)
70.299	1666	<i>Geometra papilionaria</i>	<b>Large Emerald</b>	(Linnaeus, 1758)
70.300	1667	<i>Comibaena bajularia</i>	<b>Blotched Emerald</b>	([Denis & Schiffermüller], 1775)
70.302	1673	<i>Hemistola chrysoprasaria</i>	<b>Small Emerald</b>	(Esper, 1794)
70.303	1674	<i>Jodis lactearia</i>	<b>Little Emerald</b>	(Linnaeus, 1758)
70.305	1669	<i>Hemithea aestivaria</i>	<b>Common Emerald</b>	(Hübner, 1789)
70.306	1670	<i>Chlorissa viridata</i>	<b>Small Grass Emerald</b>	(Linnaeus, 1758)
<b>Notodontidae</b>				
<b>Cerurinae</b>				
71.003	1995	<i>Cerura vinula</i>	<b>Puss Moth</b>	(Linnaeus, 1758)
71.005	1997	<i>Furcula furcula</i>	<b>Sallow Kitten</b>	(Clerck, 1759)
71.006	1996	<i>Furcula bicuspis</i>	<b>Alder Kitten</b>	(Borkhausen, 1790)
71.007	1998	<i>Ferula bifida</i>	<b>Poplar Kitten</b>	(Brahm, 1787)
<b>Dicranurinae</b>				
71.009	1999	<i>Stauropus fagi</i>	<b>Lobster Moth</b>	(Linnaeus, 1758)
<b>Notodontinae</b>				
71.010	2014	<i>Drymonia dodonaea</i>	<b>Marbled Brown</b>	([Denis & Schiffermüller], 1775)
71.011	2015	<i>Drymonia ruficornis</i>	<b>Lunar Marbled Brown</b>	(Hufnagel, 1766)
71.012	2000	<i>Notodonta dromedarius</i>	<b>Iron Prominent</b>	(Linnaeus, 1767)
71.013	2003	<i>Notodonta ziczac</i>	<b>Pebble Prominent</b>	(Linnaeus, 1758)
71.016	2005	<i>Peridea anceps</i>	<b>Great Prominent</b>	(Goeze, 1781)
71.017	2007	<i>Pheosia tremula</i>	<b>Swallow Prominent</b>	(Clerck, 1759)
71.018	2006	<i>Pheosia gnoma</i>	<b>Lesser Swallow Prominent</b>	(Fabricius, [1777])
71.020	2011	<i>Pterostoma palpina</i>	<b>Pale Prominent</b>	(Clerck, 1759)
71.021	2008	<i>Ptilodon capucina</i>	<b>Coxcomb Prominent</b>	(Linnaeus, 1758)
71.023	2010	<i>Odontosia carmelita</i>	<b>Scarce Prominent</b>	(Esper, [1798])
<b>Phalerinae</b>				
71.025	1994	<i>Phalera bucephala</i>	<b>Buff-tip</b>	(Linnaeus, 1758)
<b>Pygaerinae</b>				
71.027	2019	<i>Clostera curtula</i>	<b>Chocolate Tip</b>	(Linnaeus, 1758)
71.028	2017	<i>Clostera pigra</i>	<b>Small Chocolate-tip</b>	(Hufnagel, 1766)
<b>Erebidae</b>				
<b>Scoliopteryginae</b>				
72.001	2469	<i>Scoliopteryx libatrix</i>	<b>Herald</b>	(Linnaeus, 1758)
<b>Rivulinae</b>				
72.002	2474	<i>Rivula sericealis</i>	<b>Straw Dot</b>	(Scopoli, 1763)
<b>Hypeninae</b>				
72.003	2477	<i>Hypena proboscidalis</i>	<b>Snout</b>	(Linnaeus, 1758)
72.007	2476	<i>Hypena crassalis</i>	<b>Beautiful Snout</b>	(Fabricius, 1787)
<b>Lymantriinae</b>				
72.009	2031	<i>Leucoma salicis</i>	<b>White Satin</b>	(Linnaeus, 1758)
72.010	2033	<i>Lymantria monacha</i>	<b>Black Arches</b>	(Linnaeus, 1758)
72.012	2029	<i>Euproctis chrysorrhoea</i>	<b>Brown-tail</b>	(Linnaeus, 1758)
72.013	2030	<i>Euproctis similis</i>	<b>Yellow-tail</b>	(Fuessly, 1775)
72.015	2028	<i>Calliteara pudibunda</i>	<b>Pale Tussock</b>	(Linnaeus, 1758)
72.017	2026	<i>Orgyia antiqua</i>	<b>Vapourer</b>	(Linnaeus, 1758)
72.018	2025	<i>Orgyia recens</i>	<b>Scarce Vapourer</b>	(Hübner, [1819])
<b>Arctiinae</b>				
72.019	2061	<i>Spilosoma lutea</i>	<b>Buff Ermine</b>	(Hufnagel, 1766)

72.020	2060	<i>Spilosoma lubricipeda</i>	<b>White Ermine</b>	(Linnaeus, 1758)
72.021	2062	<i>Spilosoma urticae</i>	<b>Water Ermine</b>	(Esper, 1789)
72.022	2063	<i>Diaphora mendica</i>	<b>Muslin Moth</b>	(Clerck, 1759)
72.023	2059	<i>Diacrisia sannio</i>	<b>Clouded Buff</b>	(Linnaeus, 1758)
72.024	2064	<i>Phragmatobia fuliginosa</i>	<b>Ruby Tiger</b>	(Linnaeus, 1758)
72.025	2056	<i>Parasemia plantaginis</i>	<b>Wood Tiger</b>	(Linnaeus, 1758)
72.026	2057	<i>Arctia caja</i>	<b>Garden Tiger</b>	(Linnaeus, 1758)
72.029	2068	<i>Callimorpha dominula</i>	<b>Scarlet Tiger</b>	(Linnaeus, 1758)
72.031	2069	<i>Tyria jacobaeae</i>	<b>Cinnabar</b>	(Linnaeus, 1758)
72.035	2037	<i>Miltochrista miniata</i>	<b>Rosy Footman</b>	(Forster, 1771)
72.036	2038	<i>Nudaria mundana</i>	<b>Muslin Footman</b>	(Linnaeus, 1761)
72.037	2035	<i>Thumatha senex</i>	<b>Round-winged Muslin</b>	(Hübner, [1808])
72.038	2040	<i>Cybosia mesomella</i>	<b>Four-dotted Footman</b>	(Linnaeus, 1758)
72.041	2051	<i>Lithosia quadra</i>	<b>Four-spotted Footman</b>	(Linnaeus, 1758)
72.042	2039	<i>Atolmis rubricollis</i>	<b>Red-necked Footman</b>	(Linnaeus, 1758)
72.043	2049	<i>Eilema depressa</i>	<b>Buff Footman</b>	(Esper, 1787)
72.044	2044	<i>Eilema griseola</i>	<b>Dingy Footman</b>	(Hübner, [1803])
72.045	2050	<i>Eilema lurideola</i>	<b>Common Footman</b>	(Zincken, 1817)
72.046	2047	<i>Eilema complana</i>	<b>Scarce Footman</b>	(Linnaeus, 1758)
72.049	2043	<i>Eilema sororcula</i>	<b>Orange Footman</b>	(Hufnagel, 1766)
<b>Hermiinae</b>				
72.053	2489	<i>Herminia tarsipennis</i>	<b>Fan-foot</b>	(Treitschke, 1835)
72.055	2492	<i>Herminia grisealis</i>	<b>Small Fan-foot</b>	([Denis & Schiffermüller], 1775)
72.056	2488	<i>Pechipogo strigilata</i>	<b>Common Fan-foot</b>	(Linnaeus, 1758)
<b>Hyenodinae</b>				
72.061	2484	<i>Schrankia costaestrigalis</i>	<b>Pinion-streaked Snout</b>	(Stephens, 1834)
<b>Toxocampinae</b>				
72.063	2466	<i>Lygephila pastinum</i>	<b>Blackneck</b>	(Treitschke, 1826)
<b>Boletobiinae</b>				
72.066	2475	<i>Parascotia fuliginaria</i>	<b>Waved Black</b>	(Linnaeus, 1761)
72.067	2470	<i>Phytometra viridaria</i>	<b>Small Purple-barred</b>	(Clerck, 1759)
72.069	2473	<i>Laspeyria flexula</i>	<b>Beautiful Hook-tip</b>	([Denis & Schiffermüller], 1775)
72.073	2408	<i>Eublemma parva</i>	<b>Small Marbled</b>	(Hübner, [1808])
<b>Erebinae</b>				
72.076	2451	<i>Catocala fraxini</i>	<b>Clifden Nonpareil</b>	(Linnaeus, 1758)
72.078	2452	<i>Catocala nupta</i>	<b>Red Underwing</b>	(Linnaeus, 1767)
72.083	2463	<i>Euclidia glyphica</i>	<b>Burnet Companion</b>	(Linnaeus, 1758)
72.084	2462	<i>Euclidia mi</i>	<b>Mother Shipton</b>	(Clerck, 1759)
<b>Noctuidae</b>				
<b>Plusiinae</b>				
73.001	2450	<i>Abrostola tripartita</i>	<b>Spectacle</b>	(Hufnagel, 1766)
73.002	2449	<i>Abrostola triplasia</i>	<b>Dark Spectacle</b>	(Linnaeus, 1758)
73.003	2432	<i>Trichoplusia ni</i>	<b>Ni Moth</b>	(Hübner, 1803)
73.012	2434	<i>Diachrysia chrysitis</i>	<b>Burnished Brass</b>	(Linnaeus, 1758)
73.014	2437	<i>Polychrysia moeta</i>	<b>Golden Plusia</b>	(Fabricius, 1787)
73.015	2441	<i>Autographa gamma</i>	<b>Silver Y</b>	(Linnaeus, 1758)
73.016	2442	<i>Autographa pulchrina</i>	<b>Beautiful Golden Y</b>	(Haworth, 1809)
73.017	2443	<i>Autographa jota</i>	<b>Plain Golden Y</b>	(Linnaeus, 1758)
73.018	2444	<i>Autographa bractea</i>	<b>Gold Spangle</b>	([Denis & Schiffermüller], 1775)
73.021	2447	<i>Syngrapha interrogationis</i>	<b>Scarce Silver Y</b>	(Linnaeus, 1758)
73.022	2439	<i>Plusia festucae</i>	<b>Gold Spot</b>	(Linnaeus, 1758)
73.023	2440	<i>Plusia putnami</i>	<b>Lempke's Gold Spot</b>	(Lempke, 1966)
<b>Eustrotiinae</b>				
73.024	2410	<i>Deltote pygarga</i>	<b>Marbled White Spot</b>	(Hufnagel, 1766)
73.026	2412	<i>Deltote uncula</i>	<b>Silver Hook</b>	(Clerck, 1759)
<b>Aediinae</b>				
73.031	2465	<i>Tyta luctuosa</i>	<b>Four-spotted</b>	([Denis & Schiffermüller], 1775)
<b>Pantheinae</b>				
73.032	2425	<i>Colocasia coryli</i>	<b>Nut-tree Tussock</b>	(Linnaeus, 1758)
<b>Dilobinae</b>				
73.033	2020	<i>Diloba caeruleocephala</i>	<b>Figure of Eight</b>	(Linnaeus, 1758)
<b>Acronictinae</b>				
73.036	2281	<i>Acronicta alni</i>	<b>Alder Moth</b>	(Linnaeus, 1767)

73.037	2283	<i>Acronicta tridens</i>	<b>Dark Dagger</b>	([Denis & Schiffermüller], 1775)
73.038	2284	<i>Acronicta psi</i>	<b>Grey Dagger</b>	(Linnaeus, 1758)
73.039	2279	<i>Acronicta aceris</i>	<b>Sycamore</b>	(Linnaeus, 1758)
73.040	2280	<i>Acronicta leporina</i>	<b>Miller</b>	(Linnaeus, 1758)
73.042	2286	<i>Acronicta menyanthidis</i>	<b>Light Knot Grass</b>	(Esper, 1798)
73.045	2289	<i>Acronicta rumicis</i>	<b>Knot Grass</b>	(Linnaeus, 1758)
73.046	2278	<i>Subacronicta megacephala</i>	<b>Poplar Grey</b>	([Denis & Schiffermüller], 1775)
73.047	2291	<i>Craniophora ligustri</i>	<b>Coronet</b>	([Denis & Schiffermüller], 1775)
<b>Metoponiinae</b>				
73.048	2397	<i>Panemeria tenebrata</i>	<b>Small Yellow Underwing</b>	(Scopoli, 1763)
<b>Cuculliinae</b>				
73.050	2211	<i>Cucullia absinthii</i>	<b>Wormwood</b>	(Linnaeus, 1761)
73.052	2216	<i>Cucullia umbratica</i>	<b>Shark</b>	(Linnaeus, 1758)
73.053	2214	<i>Cucullia chamomillae</i>	<b>Chamomile Shark</b>	([Denis & Schiffermüller], 1775)
73.058	2221	<i>Cucullia verbasci</i>	<b>Mullein</b>	(Linnaeus, 1758)
<b>Oncocnemidinae</b>				
73.059	2223	<i>Calophasia lunula</i>	<b>Toadflax Brocade</b>	(Hufnagel, 1766)
73.061	2394	<i>Stilbia anomala</i>	<b>Anomalous</b>	(Haworth, 1812)
<b>Amphipyriinae</b>				
73.062	2297	<i>Amphipyra pyramidea</i>	<b>Copper Underwing</b>	(Linnaeus, 1758)
73.063	2298	<i>Amphipyra berbera</i>	<b>Svensson's Copper Underwing</b>	(Fletcher, 1968)
73.064	2299	<i>Amphipyra tragopoginis</i>	<b>Mouse Moth</b>	(Clerck, 1759)
<b>Psaphidinae</b>				
73.065	2227	<i>Asteroscopus sphinx</i>	<b>Sprawler</b>	(Hufnagel, 1766)
73.068	2245	<i>Allophyes oxyacanthae</i>	<b>Green-brindled Crescent</b>	(Linnaeus, 1758)
73.069	2243	<i>Xylocampa areola</i>	<b>Early Grey</b>	(Esper, 1789)
<b>Heliothinae</b>				
73.070	2399	<i>Pyrrhia umbra</i>	<b>Bordered Sallow</b>	(Hufnagel, 1766)
73.072	2401	<i>Heliothis viriplaca</i>	<b>Marbled Clover</b>	(Hufnagel, 1766)
73.074	2403	<i>Heliothis peltigera</i>	<b>Bordered Straw</b>	([Denis & Schiffermüller], 1775)
73.076	2400	<i>Helicoverpa armigera</i>	<b>Scarce Bordered Straw</b>	(Hübner, [1808])
<b>Bryophilinae</b>				
73.082	2292	<i>Cryphia algae</i>	<b>Tree-lichen Beauty</b>	(Fabricius, 1775)
73.084	2293	<i>Bryophila domestica</i>	<b>Marbled Beauty</b>	(Hufnagel, 1766)
<b>Xyleninae</b>				
73.087	2385	<i>Spodoptera exigua</i>	<b>Small Mottled Willow</b>	(Hübner, [1808])
73.089	2386	<i>Spodoptera littoralis</i>	<b>Mediterranean Brocade</b>	(Boisduval, 1833)
73.092	2387	<i>Caradrina morpheus</i>	<b>Mottled Rustic</b>	(Hufnagel, 1766)
73.095	2389	<i>Caradrina clavipalpis</i>	<b>Pale Mottled Willow</b>	(Scopoli, 1763)
73.096	2381	<i>Hoplodrina octogenaria</i>	<b>Uncertain</b>	(Goeze, 1781)
73.097	2382	<i>Hoplodrina blanda</i>	<b>Rustic</b>	([Denis & Schiffermüller], 1775)
73.099	2384	<i>Hoplodrina ambigua</i>	<b>Vine's Rustic</b>	([Denis & Schiffermüller], 1775)
73.100	2391	<i>Chilodes maritima</i>	<b>Silky Wainscot</b>	(Tauscher, 1806)
73.101	2380	<i>Charancya trigrammica</i>	<b>Treble Lines</b>	(Hufnagel, 1766)
73.102	2302	<i>Rusina ferruginea</i>	<b>Brown Rustic</b>	(Esper, 1785)
73.105	2301	<i>Dypterygia scabriuscula</i>	<b>Bird's Wing</b>	(Linnaeus, 1758)
73.106	2304	<i>Trachea atriplicis</i>	<b>Orache Moth</b>	(Linnaeus, 1758)
73.107	2300	<i>Mormo maura</i>	<b>Old Lady</b>	(Linnaeus, 1758)
73.109	2303	<i>Thalpophila matura</i>	<b>Straw Underwing</b>	(Hufnagel, 1766)
73.110	2320	<i>Hyppa rectilinea</i>	<b>Saxon</b>	(Esper, 1796)
73.113	2306	<i>Phlogophora meticulosa</i>	<b>Angle Shades</b>	(Linnaeus, 1758)
73.114	2305	<i>Euplexia lucipara</i>	<b>Small Angle Shades</b>	(Linnaeus, 1758)
73.118	2367	<i>Celaena haworthii</i>	<b>Haworth's Minor</b>	(Curtis, 1829)
73.119	2368	<i>Helotropha leucostigma</i>	<b>Crescent</b>	(Hübner, [1808])
73.120	2352	<i>Eremobia ochroleuca</i>	<b>Dusky Sallow</b>	([Denis & Schiffermüller], 1775)
73.121	2364	<i>Gortyna flavago</i>	<b>Frosted Orange</b>	([Denis & Schiffermüller], 1775)
73.123	2361	<i>Hydraecia micacea</i>	<b>Rosy Rustic</b>	(Esper, 1789)
73.124	2362	<i>Hydraecia petasitis</i>	<b>Butterbur</b>	(Doubleday, 1847)
73.126	2358	<i>Amphipoea fucosa</i>	<b>Saltern Ear</b>	(Freyer, 1830)
73.127	2357	<i>Amphipoea lucens</i>	<b>Large Ear</b>	(Freyer, 1845)
73.128	2360	<i>Amphipoea oculatea</i>	<b>Ear Moth</b>	(Linnaeus, 1761)
73.131	2353	<i>Luperina testacea</i>	<b>Flounced Rustic</b>	([Denis & Schiffermüller], 1775)
73.134	2375	<i>Rhizedra lutosa</i>	<b>Large Wainscot</b>	(Hübner, [1803])
73.136	2369	<i>Nonagria typhae</i>	<b>Bulrush Wainscot</b>	(Thunberg, 1784)
73.137	2377	<i>Arenostola phragmitidis</i>	<b>Fen Wainscot</b>	(Hübner, [1803])
73.139	2370	<i>Lenisa geminipuncta</i>	<b>Twin-spotted Wainscot</b>	(Haworth, 1809)
73.141	2371	<i>Archanara dissoluta</i>	<b>Brown-veined Wainscot</b>	(Treitschke, 1825)



73.142	2379	<i>Coenobia rufa</i>	<b>Small Rufous</b>	(Haworth, 1809)
73.144	2350	<i>Denticucullus pygmina</i>	<b>Small Wainscot</b>	(Haworth, 1809)
73.145	2349	<i>Photedes fluxa</i>	<b>Mere Wainscot</b>	(Hübner, [1809])
73.147	2345	<i>Photedes minima</i>	<b>Small Dotted Buff</b>	(Haworth, 1809)
73.152	2374	<i>Globia algae</i>	<b>Rush Wainscot</b>	(Esper, 1788)
73.154	2330	<i>Apamea remissa</i>	<b>Dusky Brocade</b>	(Hübner, [1809])
73.155	2327	<i>Apamea epomidion</i>	<b>Clouded Brindle</b>	(Haworth, 1809)
73.156	2326	<i>Apamea crenata</i>	<b>Clouded-bordered Brindle</b>	(Hufnagel, 1766)
73.157	2333	<i>Apamea anceps</i>	<b>Large Nutmeg</b>	([Denis & Schiffermüller], 1775)
73.158	2334	<i>Apamea sordens</i>	<b>Rustic Shoulder-knot</b>	(Hufnagel, 1766)
73.159	2331	<i>Apamea unanimitis</i>	<b>Small Clouded Brindle</b>	(Hübner, [1813])
73.160	2335	<i>Apamea scolapacina</i>	<b>Slender Brindle</b>	(Esper, 1788)
73.161	2373	<i>Globia sparganii</i>	<b>Webb's Wainscot</b>	(Esper, 1789)
73.162	2321	<i>Apamea monoglypha</i>	<b>Dark Arches</b>	(Hufnagel, 1766)
73.163	2322	<i>Apamea lithoxylaea</i>	<b>Light Arches</b>	([Denis & Schiffermüller], 1775)
73.164	2323	<i>Apamea sublustris</i>	<b>Reddish Light Arches</b>	(Esper, 1788)
73.165	2329	<i>Apamea furva</i>	<b>Confused</b>	([Denis & Schiffermüller], 1775)
73.168	2336	<i>Laterologia ophiogramma</i>	<b>Double Lobed</b>	(Esper, 1794)
73.169	2343	<i>Mesapamea secalis</i>	<b>Common Rustic</b>	(Linnaeus, 1758)
73.170	2343a	<i>Mesapamea didyma</i>	<b>Lesser Common Rustic</b>	(Esper, 1788)
73.171	2342	<i>Litologia literosa</i>	<b>Rosy Minor</b>	(Haworth, 1809)
73.172	2341	<i>Mesologia furuncula</i>	<b>Cloaked Minor</b>	([Denis & Schiffermüller], 1775)
73.173	2337	<i>Oligia strigilis</i>	<b>Marbled Minor</b>	(Linnaeus, 1758)
73.174	2339	<i>Oligia latruncula</i>	<b>Tawny Marbled Minor</b>	([Denis & Schiffermüller], 1775)
73.175	2338	<i>Oligia versicolor</i>	<b>Rufous Minor</b>	(Borkhausen, 1792)
73.176	2340	<i>Oligia fasciuncula</i>	<b>Middle-barred Minor</b>	(Haworth, 1809)
73.179	2271	<i>Tiliacea citrigo</i>	<b>Orange Sallow</b>	(Linnaeus, 1758)
73.180	2272	<i>Tiliacea aurago</i>	<b>Barred Sallow</b>	([Denis & Schiffermüller], 1775)
73.181	2273	<i>Xanthia togata</i>	<b>Pink-barred Sallow</b>	(Esper, 1788)
73.182	2274	<i>Cirrhia icteritia</i>	<b>Sallow</b>	(Hufnagel, 1766)
73.183	2275	<i>Cirrhia gilvago</i>	<b>Dusky-lemon Sallow</b>	([Denis & Schiffermüller], 1775)
73.186	2267	<i>Agrochola lychnidis</i>	<b>Beaded Chestnut</b>	([Denis & Schiffermüller], 1775)
73.187	2266	<i>Agrochola litura</i>	<b>Brown-spot Pinion</b>	(Linnaeus, 1761)
73.188	2265	<i>Agrochola helvola</i>	<b>Flounced Chestnut</b>	(Linnaeus, 1758)
73.189	2263	<i>Agrochola lota</i>	<b>Red-line Quaker</b>	(Clerck, 1759)
73.190	2264	<i>Agrochola macilenta</i>	<b>Yellow-line Quaker</b>	(Hübner, [1809])
73.192	2262	<i>Agrochola circellaris</i>	<b>Brick</b>	(Hufnagel, 1766)
73.193	2270	<i>Omphaloscelis lunosa</i>	<b>Lunar Underwing</b>	(Haworth, 1809)
73.194	2258	<i>Conistra vaccinii</i>	<b>Chestnut</b>	(Linnaeus, 1761)
73.195	2259	<i>Conistra ligula</i>	<b>Dark Chestnut</b>	(Esper, 1791)
73.197	2260	<i>Conistra rubiginea</i>	<b>Dotted Chestnut</b>	([Denis & Schiffermüller], 1775)
73.199	2257	<i>Jodia croceago</i>	<b>Orange Upperwing</b>	([Denis & Schiffermüller], 1775)
73.200	2235	<i>Lithophane semibrunnea</i>	<b>Tawny Pinion</b>	(Haworth, 1809)
73.201	2236	<i>Lithophane socia</i>	<b>Pale Pinion</b>	(Hufnagel, 1766)
73.202	2237	<i>Lithophane ornitopus</i>	<b>Grey Shoulder-knot</b>	(Dadd, 1911)
73.206	2240	<i>Lithophane leautieri</i>	<b>Blair's Shoulder-knot</b>	(Boursin, 1957)
73.207	2233	<i>Xylena solidaginis</i>	<b>Golden-rod Brindle</b>	(Hübner, [1803])
73.208	2242	<i>Xylena exsoleta</i>	<b>Sword-grass</b>	(Linnaeus, 1758)
73.209	2241	<i>Xylena vetusta</i>	<b>Red Sword-grass</b>	(Hübner, [1813])
73.210	2256	<i>Eupsilia transversa</i>	<b>Satellite</b>	(Hufnagel, 1766)
73.211	2313	<i>Enargia paleacea</i>	<b>Angle-striped Sallow</b>	(Esper, 1791)
73.212	2311	<i>Ipimorpha retusa</i>	<b>Double Kidney</b>	(Linnaeus, 1761)
73.213	2312	<i>Ipimorpha subtusa</i>	<b>Olive</b>	([Denis & Schiffermüller], 1775)
73.214	2317	<i>Cosmia diffinis</i>	<b>White-spotted Pinion</b>	(Linnaeus, 1767)
73.215	2316	<i>Cosmia affinis</i>	<b>Lesser-spotted Pinion</b>	(Linnaeus, 1767)
73.216	2318	<i>Cosmia trapezina</i>	<b>Dun-bar</b>	(Linnaeus, 1758)
73.217	2319	<i>Cosmia pyralina</i>	<b>Lunar-spotted Pinion</b>	([Denis & Schiffermüller], 1775)
73.219	2269	<i>Atethmia centrigo</i>	<b>Centre-barred Sallow</b>	(Haworth, 1809)
73.220	2225	<i>Brachylomia viminalis</i>	<b>Minor Shoulder-knot</b>	(Fabricius, [1777])
73.221	2268	<i>Parastichtis suspecta</i>	<b>Suspected</b>	(Hübner, [1817])
73.222	2314	<i>Apterogenum ypsilon</i>	<b>Dingy Shears</b>	([Denis & Schiffermüller], 1775)
73.224	2247	<i>Griposia aprilina</i>	<b>Merveille du jour</b>	(Linnaeus, 1758)
73.225	2248	<i>Dryobotodes eremita</i>	<b>Brindled Green</b>	(Fabricius, 1775)
73.228	2254	<i>Antitype chi</i>	<b>Grey Chi</b>	(Linnaeus, 1758)
73.231	2231	<i>Aporophyla lutulenta</i>	<b>Deep Brown Dart</b>	([Denis & Schiffermüller], 1775)
73.233	2232	<i>Aporophyla nigra</i>	<b>Black Rustic</b>	(Haworth, 1809)
73.234	2229	<i>Dasyptolia templi</i>	<b>Brindled Ochre</b>	(Thunberg, 1792)
73.237	2252	<i>Polymixis flavicincta</i>	<b>Large Ranunculus</b>	([Denis & Schiffermüller], 1775)
73.238	2250	<i>Mniotype adusta</i>	<b>Dark Brocade</b>	(Esper, 1790)
<b>Hadeninae</b>				
73.241	2179	<i>Panolis flammea</i>	<b>Pine Beauty</b>	([Denis & Schiffermüller], 1775)
73.242	2188	<i>Orthosia incerta</i>	<b>Clouded Drab</b>	(Hufnagel, 1766)
73.243	2183	<i>Orthosia miniosa</i>	<b>Blossom Underwing</b>	([Denis & Schiffermüller], 1775)
73.244	2187	<i>Orthosia cerasi</i>	<b>Common Quaker</b>	(Fabricius, 1775)

73.245	2182	<i>Orthosia cruda</i>	<b>Small Quaker</b>	([Denis & Schiffermüller], 1775)
73.246	2185	<i>Orthosia populeti</i>	<b>Lead-coloured Drab</b>	(Fabricius, 1781)
73.247	2186	<i>Orthosia gracilis</i>	<b>Powdered Quaker</b>	([Denis & Schiffermüller], 1775)
73.248	2184	<i>Orthosia opima</i>	<b>Northern Drab</b>	(Hübner, [1809])
73.249	2190	<i>Orthosia gothica</i>	<b>Hebrew Character</b>	(Linnaeus, 1758)
73.250	2189	<i>Anorthoa munda</i>	<b>Twin-spotted Quaker</b>	([Denis & Schiffermüller], 1775)
73.252	2177	<i>Tholera cespitis</i>	<b>Hedge Rustic</b>	([Denis & Schiffermüller], 1775)
73.253	2178	<i>Tholera decimalis</i>	<b>Feathered Gothic</b>	(Poda, 1761)
73.254	2176	<i>Cerapteryx graminis</i>	<b>Antler Moth</b>	(Linnaeus, 1758)
73.255	2145	<i>Anarta trifolii</i>	<b>Nutmeg</b>	(Hufnagel, 1766)
73.257	2142	<i>Anarta myrtilli</i>	<b>Beautiful Yellow Underwing</b>	(Linnaeus, 1761)
73.259	2148	<i>Polia bombycina</i>	<b>Pale Shining Brown</b>	(Hufnagel, 1766)
73.261	2150	<i>Polia nebulosa</i>	<b>Grey Arches</b>	(Hufnagel, 1766)
73.263	2157	<i>Lacanobia w-latinum</i>	<b>Light Brocade</b>	(Hufnagel, 1766)
73.264	2158	<i>Lacanobia thalassina</i>	<b>Pale-shouldered Brocade</b>	(Hufnagel, 1766)
73.265	2156	<i>Lacanobia contigua</i>	<b>Beautiful Brocade</b>	([Denis & Schiffermüller], 1775)
73.266	2159	<i>Lacanobia suasa</i>	<b>Dog's Tooth</b>	([Denis & Schiffermüller], 1775)
73.267	2160	<i>Lacanobia oleracea</i>	<b>Bright-line Brown-eye</b>	(Linnaeus, 1758)
73.270	2155	<i>Melanchra persicariae</i>	<b>Dot Moth</b>	(Linnaeus, 1761)
73.271	2163	<i>Ceramica pisi</i>	<b>Broom Moth</b>	(Linnaeus, 1758)
73.272	2162	<i>Papestra biren</i>	<b>Glauous Shears</b>	(Goeze, 1781)
73.273	2147	<i>Hada plebeja</i>	<b>Shears</b>	(Linnaeus, 1761)
73.274	2154	<i>Mamestra brassicae</i>	<b>Cabbage Moth</b>	(Linnaeus, 1758)
73.275	2152	<i>Sideridis turbida</i>	<b>White Colon</b>	(Esper, 1790)
73.276	2166	<i>Sideridis rivularis</i>	<b>Campion</b>	(Fabricius, 1775)
73.277	2153	<i>Sideridis reticulata</i>	<b>Bordered Gothic</b>	(Haworth, 1809)
73.279	2164	<i>Hecatera bicolorata</i>	<b>Broad-barred White</b>	(Hufnagel, 1766)
73.280	2165	<i>Hecatera dysodea</i>	<b>Small Ranunculus</b>	([Denis & Schiffermüller], 1775)
73.281	2173	<i>Hadena bicurris</i>	<b>Lychnis</b>	(Hufnagel, 1766)
73.282	2170	<i>Hadena compta</i>	<b>Varied Coronet</b>	([Denis & Schiffermüller], 1775)
73.283	2171	<i>Hadena confusa</i>	<b>Marbled Coronet</b>	(Hufnagel, 1766)
73.286	2167	<i>Dianthoecia cucubali</i>	<b>Tawny Shears</b>	([Denis & Schiffermüller], 1775)
73.288	2191	<i>Mythimna turca</i>	<b>Double Line</b>	(Linnaeus, 1761)
73.289	2196	<i>Mythimna pudorina</i>	<b>Striped Wainscot</b>	([Denis & Schiffermüller], 1775)
73.290	2192	<i>Mythimna conigera</i>	<b>Brown-line Bright-eye</b>	([Denis & Schiffermüller], 1775)
73.291	2199	<i>Mythimna pallens</i>	<b>Common Wainscot</b>	(Linnaeus, 1758)
73.293	2198	<i>Mythimna impura</i>	<b>Smoky Wainscot</b>	(Hübner, [1808])
73.294	2197	<i>Mythimna straminea</i>	<b>Southern Wainscot</b>	(Treitschke, 1825)
73.295	2195	<i>Mythimna vitellina</i>	<b>Delicate</b>	(Hübner, [1808])
73.296	2203	<i>Mythimna unipuncta</i>	<b>White-speck</b>	(Haworth, 1809)
73.297	2194	<i>Mythimna albipuncta</i>	<b>White-point</b>	([Denis & Schiffermüller], 1775)
73.298	2193	<i>Mythimna ferrago</i>	<b>Clay</b>	(Fabricius, 1787)
73.301	2205	<i>Leucania comma</i>	<b>Shoulder-striped Wainscot</b>	(Linnaeus, 1761)
73.302	2204	<i>Leucania obsoleta</i>	<b>Obscure Wainscot</b>	(Hübner, [1803])
73.304	2208	<i>Leucania loreyi</i>	<b>Cosmopolitan</b>	(Duponchel, 1827)
<b>Noctuinae</b>				
73.307	2119	<i>Peridroma saucia</i>	<b>Pearly Underwing</b>	(Hübner, [1808])
73.308	2099	<i>Actebia praecox</i>	<b>Portland Moth</b>	(Linnaeus, 1758)
73.309	2100	<i>Actebia fennica</i>	<b>Eversmann's Rustic</b>	(Tauscher, 1806)
73.312	2080	<i>Euxoa obelisca</i>	<b>Square-spot Dart</b>	(Tutt, 1902)
73.313	2081	<i>Euxoa tritici</i>	<b>White-line Dart</b>	(Linnaeus, 1761)
73.314	2082	<i>Euxoa nigricans</i>	<b>Garden Dart</b>	(Linnaeus, 1761)
73.316	2084	<i>Agrotis cinerea</i>	<b>Light Feathered Rustic</b>	([Denis & Schiffermüller], 1775)
73.317	2089	<i>Agrotis exclamationis</i>	<b>Heart and Dart</b>	(Linnaeus, 1758)
73.319	2087	<i>Agrotis segetum</i>	<b>Turnip Moth</b>	([Denis & Schiffermüller], 1775)
73.320	2088	<i>Agrotis clavis</i>	<b>Heart and Club</b>	(Hufnagel, 1766)
73.322	2085	<i>Agrotis vestigialis</i>	<b>Archer's Dart</b>	(Hufnagel, 1766)
73.325	2092	<i>Agrotis puta</i>	<b>Shuttle-shaped Dart</b>	(Hübner, [1803])
73.327	2091	<i>Agrotis ipsilon</i>	<b>Dark Sword-grass</b>	(Hufnagel, 1766)
73.328	2098	<i>Axylia putris</i>	<b>Flame</b>	(Linnaeus, 1761)
73.329	2102	<i>Ochropleura plecta</i>	<b>Flame Shoulder</b>	(Linnaeus, 1761)
73.331	2121	<i>Diarsia dahlia</i>	<b>Barred Chestnut</b>	(Hübner, [1813])
73.332	2122	<i>Diarsia brunnea</i>	<b>Purple Clay</b>	([Denis & Schiffermüller], 1775)
73.333	2120	<i>Diarsia mendica</i>	<b>Ingrailed Clay</b>	(Fabricius, 1775)
73.334	2123	<i>Diarsia rubi</i>	<b>Small Square-spot</b>	(Vieweg, 1790)
73.336	2139	<i>Cerastis rubricosa</i>	<b>Red Chestnut</b>	([Denis & Schiffermüller], 1775)
73.337	2140	<i>Cerastis leucographa</i>	<b>White-marked</b>	([Denis & Schiffermüller], 1775)
73.338	2118	<i>Lycophotia porphyrea</i>	<b>True Lover's Knot</b>	([Denis & Schiffermüller], 1775)
73.339	2105	<i>Rhyacia simulans</i>	<b>Dotted Rustic</b>	(Hufnagel, 1766)
73.341	2104	<i>Standfussiana lucerneae</i>	<b>Northern Rustic</b>	(Linnaeus, 1758)
73.342	2107	<i>Noctua pronuba</i>	<b>Large Yellow Underwing</b>	(Linnaeus, 1758)
73.343	2110	<i>Noctua fimbriata</i>	<b>Broad-bordered Yellow Underwing</b>	(Schreber, 1759)
73.344	2108	<i>Noctua orbona</i>	<b>Lunar Yellow Underwing</b>	(Hufnagel, 1766)
73.345	2109	<i>Noctua comes</i>	<b>Lesser Yellow Underwing</b>	(Hübner, [1813])

73.346	2112	<i>Noctua interjecta</i>	<b>Least Yellow Underwing</b>	(Hübner, [1803])
73.348	2111	<i>Noctua janthe</i>	<b>Lesser Broad-bordered Yellow Underwing</b>	(Borkhausen, 1792)
73.349	2113	<i>Spaelotis ravidata</i>	<b>Stout Dart</b>	([Denis & Schiffermüller], 1775)
73.350	2137	<i>Eurois occulta</i>	<b>Great Brocade</b>	(Linnaeus, 1758)
73.351	2114	<i>Graphiphora augur</i>	<b>Double Dart</b>	(Fabricius, 1775)
73.352	2138	<i>Anaplectoides prasina</i>	<b>Green Arches</b>	([Denis & Schiffermüller], 1775)
73.353	2130	<i>Xestia baja</i>	<b>Dotted Clay</b>	([Denis & Schiffermüller], 1775)
73.354	2131	<i>Xestia stigmatica</i>	<b>Square-spotted Clay</b>	(Hübner, [1813])
73.355	2132	<i>Xestia castanea</i>	<b>Neglected Rustic</b>	(Esper, 1798)
73.356	2135	<i>Xestia agathina</i>	<b>Heath Rustic</b>	(Duponchel, 1827)
73.357	2134	<i>Xestia xanthographa</i>	<b>Square-spot Rustic</b>	([Denis & Schiffermüller], 1775)
73.358	2133	<i>Xestia sexstrigata</i>	<b>Six-striped Rustic</b>	(Haworth, 1809)
73.359	2126	<i>Xestia c-nigrum</i>	<b>Setaceous Hebrew Character</b>	(Linnaeus, 1758)
73.360	2127	<i>Xestia ditrapezium</i>	<b>Triple-spotted Clay</b>	([Denis & Schiffermüller], 1775)
73.361	2128	<i>Xestia triangulum</i>	<b>Double Square-spot</b>	(Hufnagel, 1766)
73.365	2117	<i>Eugnorisma glareosa</i>	<b>Autumnal Rustic</b>	(Esper, 1788)
73.368	2136	<i>Naenia typica</i>	<b>Gothic</b>	(Linnaeus, 1758)

## Nolidae

Nolinae				
74.002	2076	<i>Meganola albula</i>	<b>Kent Black Arches</b>	([Denis & Schiffermüller], 1775)
74.003	2077	<i>Nola cucullatella</i>	<b>Short-cloaked Moth</b>	(Linnaeus, 1758)
74.004	2078	<i>Nola confusalis</i>	<b>Least Black Arches</b>	(Herrich-Schäffer, 1847)
Chloephorinae				
74.007	2421	<i>Bena bicolorana</i>	<b>Scarce Silver-lines</b>	(Fuessly, 1775)
74.008	2422	<i>Pseudoips prasinana</i>	<b>Green Silver-lines</b>	(Linnaeus, 1758)
74.009	2423	<i>Nycteola revayana</i>	<b>Oak Nycteoline</b>	(Scopoli, 1772)
74.011	2418	<i>Earias clorana</i>	<b>Cream-bordered Green Pea</b>	(Linnaeus, 1761)